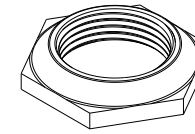


NOTES:

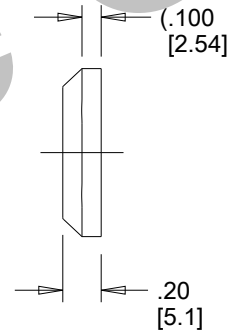
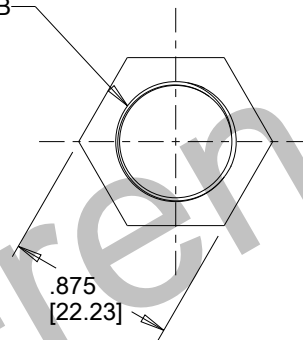
1. DRAWING TO BE INTERPRETED IN ACCORDANCE WITH THE CURRENT REVISION OF ASME Y14.5
2. TSI TO BE INTERPRETED AS THEORETICAL SHARP INTERSECTION.
3. THIS PART IS TO BE MANUFACTURED IN ACCORDANCE WITH THE LATEST APPLICABLE REGULATIONS OF EC DIRECTIVES FOR THE RESTRICTION OF THE USE OF HAZARDOUS SUBSTANCES IN ELECTRICAL AND ELECTRONIC EQUIPMENT (ROHS), WASTE ELECTRICAL AND ELECTRONIC EQUIPMENT (WEEE) AND REGISTRATION, EVALUATION, AUTHORIZATION AND RESTRICTION OF CHEMICALS (REACH).
4. UNLESS OTHERWISE SPECIFIED, ALL DIMENSIONS ARE IN INCH [METRIC]. IN THE EVENT OF A CONFLICT, THE INCH NOMINAL VALUE AND TOLERANCE SHALL TAKE PRECEDENCE.
5. MATERIAL: ALUMINUM, BLACK ANODIZED.
6. PARTS ARE BULK PACKED.



C301623

REV	ECN #	DATE	APR
A	B21246	24 AUG 20	TAO

5/8-24 UNEF 2B



Reference Only

**OTTO**  
CARPENTERSVILLE, ILLINOIS USA

DESCRIPTION  
P1, DRESS NUT, KIT

KEY CHARACTERISTICS (SR) SPECIAL REQUIREMENT

UNLESS OTHERWISE SPECIFIED:  
DIMENSIONS ARE IN INCHES.  
TOLERANCES ARE AS LISTED.  
MUST BE FREE FROM BURRS  
AND SHARP EDGES.

TOLERANCES  
.XX ±.03  
.XXX ±.010  
ANGLES ±2°  
DO NOT SCALE DRAWING

THIS DOCUMENT IS THE CONFIDENTIAL  
PROPERTY OF OTTO ENGINEERING, INC..  
IT IS NOT TO BE USED IN ANY WAY  
DETRIMENTAL TO THE INTERESTS  
OF OTTO ENGINEERING, INC..

DRWN. TAO	SIZE	FSCM NO	DRAWING NO.	REV.
CHKD. TAO	A	21649	C301623	A
APPD. SNM				
THIRD ANGLE PROJECTION			Scale 2:1	Sheet 1 OF 1