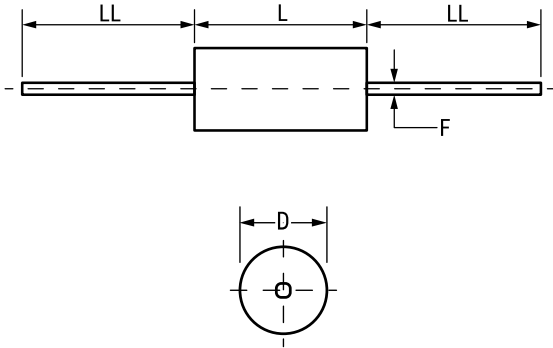



LDD Comm COG, Ceramic, 3300 pF, 10%, 200 VDC, COG



Dimensions	
D	3.56mm +/-0.25mm
L	9.91mm +/-0.25mm
LL	38.1mm MIN
F	0.64mm +0.1/-0.025mm

Packaging Specifications	
Packaging:	T&R
Packaging Quantity:	3000

General Information	
Series:	LDD Comm COG
RoHS:	No
Prop 65:	 WARNING: Cancer and reproductive harm - www.p65warnings.ca.gov .
REACH:	SVHC (Pb – CAS 7439-92-1)
Termination:	Lead (SnPb)
Notes:	Lead Length Shown Is For Parts Supplied In Bulk, See Packaging Specifications For Lead Lengths When Not Provided In Bulk

Specifications	
Capacitance:	3300 pF
Capacitance Tolerance:	10%
Voltage DC:	200 VDC
Dielectric Withstanding Voltage:	500 VDC
Temperature Range:	-55/+125°C
Temperature Coefficient:	COG
Dissipation Factor:	0.10% 1kHz 25C
Insulation Resistance:	303 MOhms