



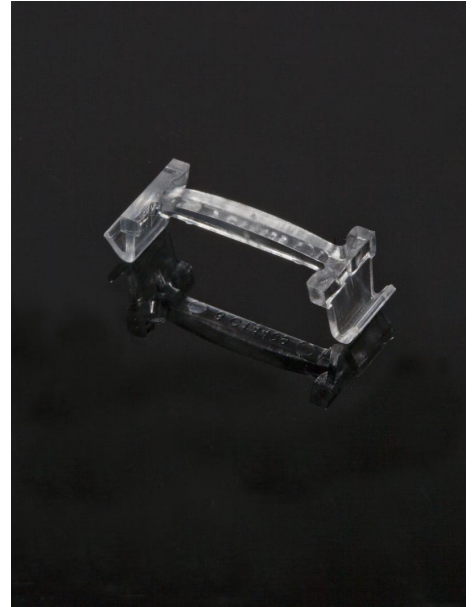
# PRODUCT DATASHEET

## Florence series

last update 29/9/2017

### DETAILS

<b>Product Number</b>	C14409_FLORENCE-1R-CLIP-B
<b>Family</b>	Florence
<b>Type</b>	Accessory
<b>Color</b>	clear
<b>Diameter</b>	mm
<b>Height</b>	6,85 mm
<b>Style</b>	
<b>Optic Material</b>	
<b>Holder Material</b>	
<b>Fastening</b>	clips
<b>Status</b>	production ready
<b>ROHS Compliant</b>	Yes
<b>Date Updated</b>	29/09/2017



### OPTICAL PROPERTIES

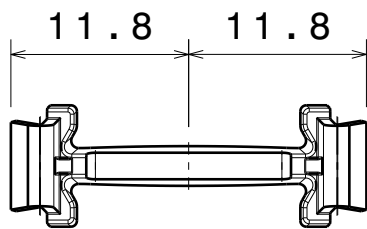
LED	Viewing Angle	Light Beam	Efficiency	cd/lm	Connector
-	N/A deg	-	-	-	-

D

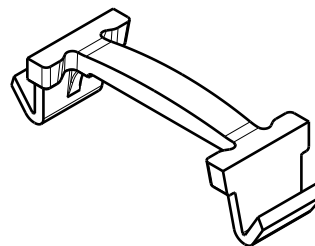
C

B

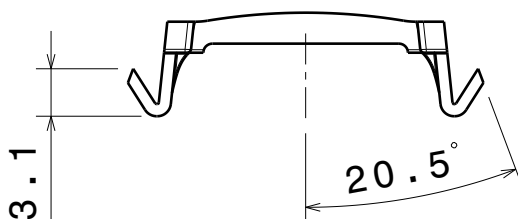
A



Bottom view



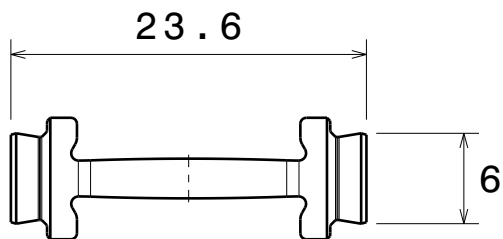
Isometric view



Right view



Front view



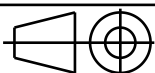
Top view

INDEX	PART NO	DESCRIPTION	MATERIAL	COLOUR
1	C14409	FLORENCE-CLIP-B	PC	clear

Tolerances if not otherwise shown  
According to DIN ISO 2768-1  
Linear measures: class M  
According to DIN ISO 2768-2  
Form and position: class L

Ledil Oy  
Salorankatu 10  
FIN 24240 SALO  
Finland

THIRD ANGLE PROJECTION:



DRAWING TITLE

FLORENCE-1R-CLIP-B Datasheet

This drawing is the property  
of LEDiL Oy. It may not be  
reproduced, copied or  
communicated without a written  
agreement with LEDiL Oy.

SIZE PART NUMBER

A4

C14409

SCALE 2:1 WEIGHT -

SHEET 1/1

D

A

**NOTE: The typical divergence will be changed by different color, chip size and chip position tolerance. The typical total divergence is the full angle measured where the luminous intensity is half of the peak value.**