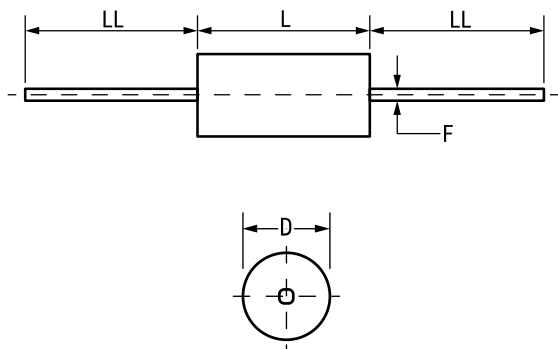


LDD Comm COG, Ceramic, 10 pF, 10%, 200 VDC, COG



| Dimensions | |
|------------|------------------|
| D | 2.29mm +/-0.25mm |
| L | 4.06mm +/-0.25mm |
| LL | 38.1mm MIN |
| F | 0.51mm -0.08mm |

| Packaging Specifications | |
|--------------------------|------|
| Packaging: | T&R |
| Packaging Quantity: | 5000 |

| General Information | |
|---------------------|--|
| Series: | LDD Comm COG |
| RoHS: | No |
| Prop 65: | WARNING: Cancer and reproductive harm - www.p65warnings.ca.gov . |
| REACH: | SVHC (Pb – CAS 7439-92-1) |
| Termination: | Lead (SnPb) |
| Notes: | Lead Length Shown Is For Parts Supplied In Bulk, See Packaging Specifications For Lead Lengths When Not Provided In Bulk |

| Specifications | |
|----------------------------------|----------------|
| Capacitance: | 10 pF |
| Capacitance Tolerance: | 10% |
| Voltage DC: | 200 VDC |
| Dielectric Withstanding Voltage: | 500 VDC |
| Temperature Range: | -55/+125°C |
| Temperature Coefficient: | COG |
| Dissipation Factor: | 0.10% 1MHz 25C |
| Insulation Resistance: | 100 GOhms |