

1) Exit direction 90° connector, 2) Output function, 3) Ultrasonic transducer axis, 4) Operating voltage



Basic features

Application	Distance measurement
Approval/Conformity	cULus CE WEEE UKCA
Operating mode	Analog measurement (output curve)
Series	W18M1

Display/Operation

Adjuster	no
Display	LED green: Power Object in range - LED yellow

Electrical connection

Connection	M12x1-Male, 5-pin
Polarity reversal protected	yes

Electrical data

Current draw max.	40 mA
Input function	Output curve rising/falling Teach in the working range Factory setting (Reset) Synchronization on/off Synchronization signal
Load resistance RL max. (Analog I)	500 Ohm at UB > 20 V 100 Ohm at UB < 20 V
Operating voltage Ub	10...30 VDC
Rated operating voltage Ue DC	24 V
Synchronization	internal, max. 10 sensors
Ultrasonic Frequency	400 kHz

Environmental conditions

Ambient temperature	-25...70 °C
IP rating	IP67
Storage temperature	-40...85 °C

Ultrasonic Sensors
BUS W18M1-XB-07/035-S92G
Order Code: BUS004U

BALLUFF

Functional safety

MTTF (40 °C) 1134 a

Interface

Analog output Analog, current 4...20 mA
 Output characteristic linear rising/falling

Material

Housing material Brass, nickel-plated
 PBT
 Material sensing surface PU foam/Epoxy resin/Glass
 Surface protection nickel-plated

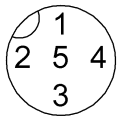
Mechanical data

Dimension Ø 18 x 68.4 mm
 Mounting part Nut M18x1

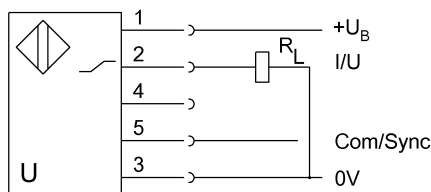
Range/Distance

Measuring range 65...600 mm
 Rated operating distance S_n 350 mm
 Repeat accuracy ± 0.15 %FS
 Resolution ≤ 0.069 mm

Connector Drawings



Wiring Diagrams



Technical Drawings

