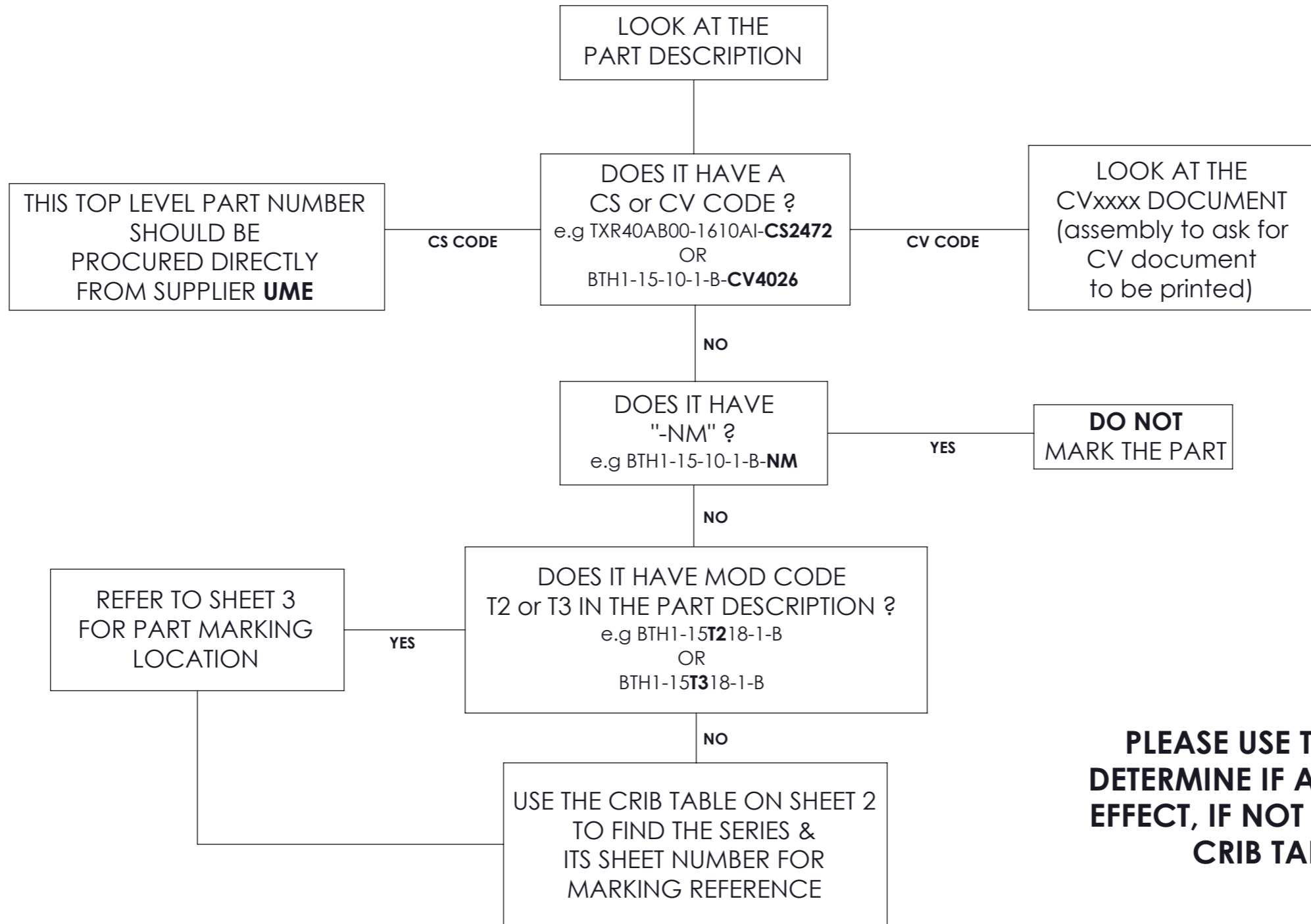


PART MARKING GUIDE FOR CIRCULAR BACKSHELLS

THIS DOCUMENT TAKES PRECEDENCE OVER PRODUCTION DRAWINGS (BOM) & CUSTOMER DRAWINGS



PLEASE USE THIS FLOW CHART TO DETERMINE IF ANY EXEMPTIONS TAKE EFFECT, IF NOT THEN PROCEED TO THE CRIB TABLE ON SHEET 2.

AC	CRN 26424	01/07/2024	NH	KKW
AB	CRN 26424	03/04/2024	CW	KKW
AA	INITIAL RELEASE	05/08/2022	KKW	RS
REV	DESCRIPTION	DATE	DWN	APVD

DIMENSIONS: mm	TOLERANCES UNLESS OTHERWISE SPECIFIED: 0 PLC ±0,40 1 PLC ±0,20 2 PLC ±0,10 ANGLES ±1° ALL FILLETS 0,4 MAX
ALL DIAMETERS	
SURFACE FINISH Ra1,6 MAX REMOVE ALL BURRS AND SHARP EDGES TO 0,1 MAX	

DWN	19/07/2022	MATERIAL	N/A	HEAT TREAT	N/A
CHK	21/07/2022	TE Connectivity			
APVD	19/07/2022				
NAME	R.MCSHERRY				
PART MARK GUIDE FOR CIRCULAR BACKSHELLS (CATALOGUE PARTS)					
SCALE	2:1	SIZE	A3	PART NO	DM0113
SHEET	1	OF	7	REV	AD

THIS INFORMATION IS CONFIDENTIAL AND PROPRIETARY TO TYCO ELECTRONICS CORPORATION AND ITS WORLDWIDE SUBSIDIARIES AND AFFILIATES (TE). IT MAY NOT BE DISCLOSED TO ANYONE, OTHER THAN TE PERSONNEL, WITHOUT AUTHORIZATION FROM TE (www.TE.com).

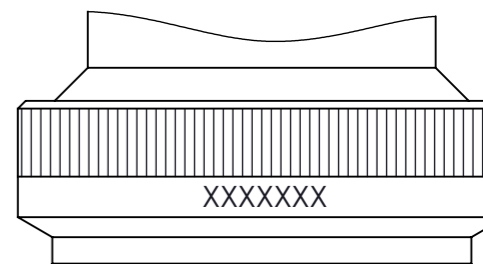
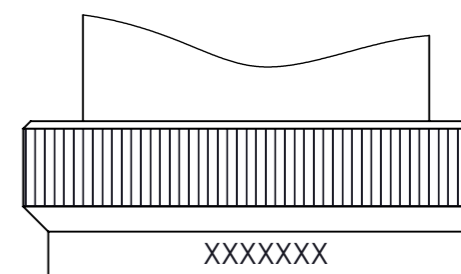
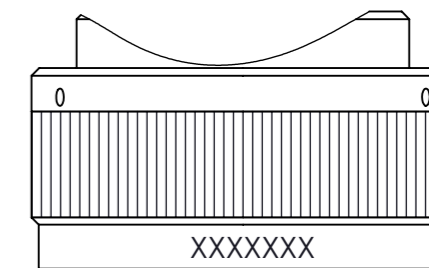
PART MARKING GUIDE FOR CIRCULAR BACKSHELLS

THIS DOCUMENT TAKES PRECEDENCE OVER PRODUCTION DRAWINGS (BOM) & CUSTOMER DRAWINGS

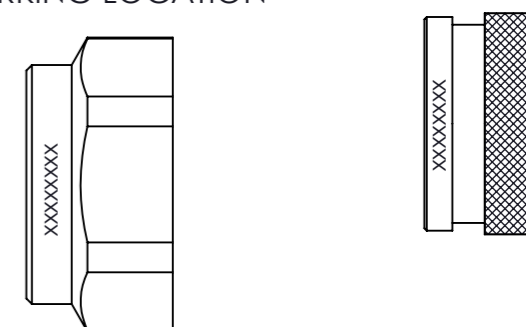
CRIB TABLE (USE THIS TABLE TO REFER TO WHICH SHEET FOR MARKING SEQUENCE)

SERIES	SHEET NO.	SERIES	SHEET NO.	SERIES	SHEET NO.	SERIES	SHEET NO.	SERIES	SHEET NO.
11	4	DB	4	100P3249	4	ACSD	7		
15	4	DC	4	100P2121	4	S700	4		
25	4	DS	4	100P615	4				
34	4	KM	4	100P3214	4				
35	4	KMA	4	100P1703	4				
36	4	KMCC	4	PMTAK	6				
37	4	GKN	4	PMTAKS (NPT)	7				
39	4	MB	4	PMTAKR (NPT)	7				
51	4	NPF	4	TAK	5				
60	4	NPM	4	100P449	6				
64	4	PAS	4	100P1676	6				
70	4	PGF	4	100P2268	6				
76	4	PVG	4	100P2739	6				
77	4	SIT	4	100P2960	6				
86	4	TMF	4	100P3062	6				
88	4	TMM	4	100P3210	6				
91*	4	VG	4	100P3213	6				
92	4	100P252	4	100P3337	6				
95	4	100P670	4	100P3610	6				
96	4	100P1300	4	100P3623	6				
97	4	100P2682	4	100P3658	6				
98	4	100P3230	7	100P3707	6				
99	4	100P3307	4	100P308	6				
AP	6	100P3738	4	100P1608	4				
APNCJ	4	100P3807LN	4	100P3718	4				
BC	4	100P3807	4	POL3660/17	5				
BT	4	100P1396	4	POL3660/18	5				

EXAMPLES OF NUT PROFILES AND RESPECTIVE MARKING LOCATIONS



S700 NUT EXAMPLE MARKING LOCATION



* NOTE: FOR ANY SERIES WITH A 'HE' SPRING REFERENCE, IT IS REMOVED FROM THE PART MARKING SEQUENCE;
 FOR EXAMPLE FULL PART DESCRIPTION - 91H1-11-05-1-C-HE100
 PART DESCRIPTION FOR MARKING - 91H1-11-05-1-C

EXAMPLE OF WHERE TO FIND THE SERIES CODE IN THE PART DESCRIPTION:

91H1-11-05-1-C

SERIES
 (MINIMUM 2 CHARACTERS LONG, FOUND IN TABLE ABOVE)

DIMENSIONS: mm	TOLERANCES UNLESS OTHERWISE SPECIFIED: 0 PLC ±0,40 1 PLC ±0,20 2 PLC ±0,10 ANGLES ±1° ALL FILLETS 0,4 MAX
ALL DIAMETERS	SURFACE FINISH Ra1,6 MAX REMOVE ALL BURRS AND SHARP EDGES TO 0,1 MAX

DWN	19/07/2022	MATERIAL	N/A	HEAT TREAT	N/A
CHK	21/07/2022	TE Connectivity			
APVD	19/07/2022				
NAME	R.MCSHERRY				
PART MARK GUIDE FOR CIRCULAR BACKSHELLS (CATALOGUE PARTS)					
SCALE	2:1	SIZE	A3	PART NO	DM0113
REV	-	SHEET	2 OF 7	REV	AD

REV	-	DESCRIPTION	DATE	DWN	APVD
		SEE SHEET 1			

PART MARKING GUIDE FOR CIRCULAR BACKSHELLS

SEE NOTES FOR EXEMPTIONS

THIS DOCUMENT TAKES PRECEDENCE OVER PRODUCTION DRAWINGS (BOM) & CUSTOMER DRAWINGS

USED DN

DM0113

DWG NO

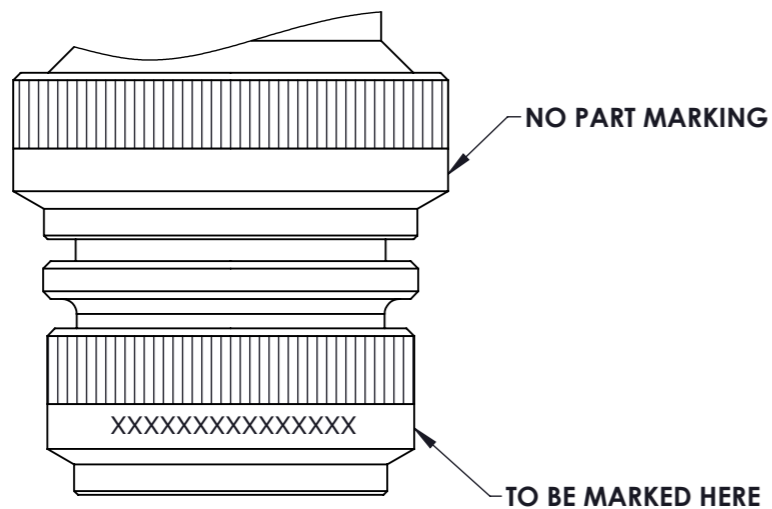
THIS DRAWING IS A CONTROLLED DOCUMENT

STYLE 2 (T2) / STYLES 3 (T3) BACKSHELL EXAMPLE

TWO PIECE BACKSHELL ASSEMBLY

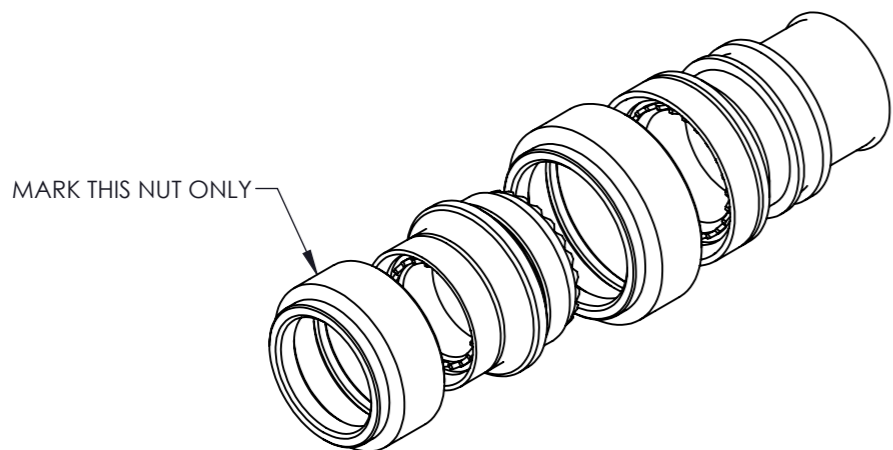
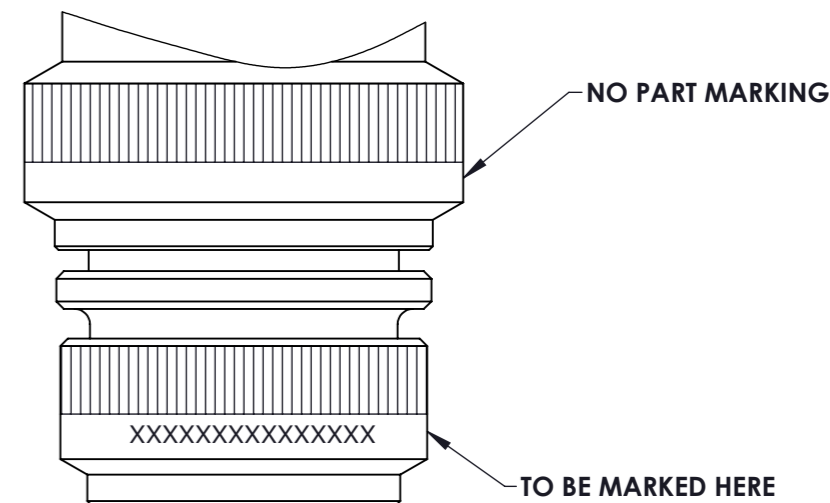
ONLY FRONT NUT MUST BE PART MARKED

T2 EXAMPLE

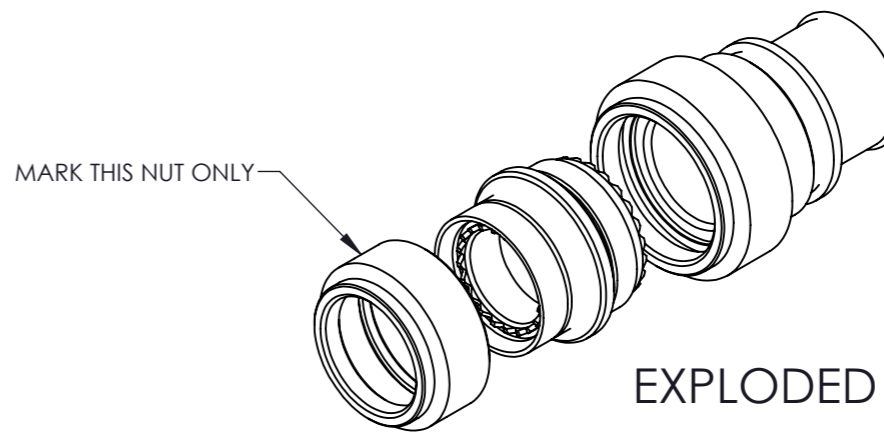


T3 EXAMPLE

USE SAME PARAMETERS AS STATED ON T2 EXAMPLE



EXPLODED VIEW



EXPLODED VIEW

-	SEE SHEET 1	-	-	-
REV	DESCRIPTION	DATE	DWN	APVD

DIMENSIONS: mm	TOLERANCES UNLESS OTHERWISE SPECIFIED: 0 PLC ±0,40 1 PLC ±0,20 2 PLC ±0,10 ANGLES ±1° ALL FILLETS 0,4 MAX
ALL DIAMETERS	
SURFACE FINISH Ra1,6 MAX REMOVE ALL BURRS AND SHARP EDGES TO 0,1 MAX	

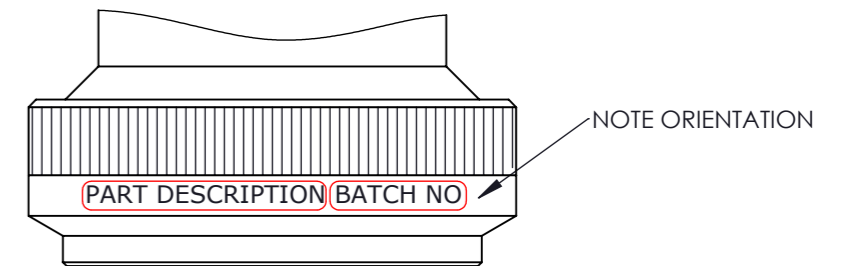
DWN	19/07/2022	MATERIAL	N/A	HEAT TREAT	N/A
CHK	21/07/2022	TE Connectivity			
NAME	R.STYLES				
APVD	19/07/2022				
NAME	R.MCSHERRY	PART MARKING GUIDE FOR CIRCULAR BACKSHELLS (CATALOGUE PARTS)			
SCALE	2:1	SIZE	A3	PART NO	DM0113
REV	AD	SHEET	3 OF 7		

THIS INFORMATION IS CONFIDENTIAL AND PROPRIETARY TO TYCO ELECTRONICS CORPORATION AND ITS WORLDWIDE SUBSIDIARIES AND AFFILIATES (TE). IT MAY NOT BE DISCLOSED TO ANYONE, OTHER THAN TE PERSONNEL, WITHOUT AUTHORIZATION FROM TE (www.TE.com).

PART MARKING GUIDE FOR CIRCULAR BACKSHELLS

PART MARKING DETAILS TABLE - *BACKSHELL SERIES REQUIRING PART NUMBER AND BATCH NUMBER ONLY*

SERIES		
11	99	100P670
15	APNCJ	100P1300
25	BC	100P1608
34	BT	100P2682
35	DB	100P3718
36	DC	100P3307
37	DS	100P3738
39	KM	100P3807LN
51	KMA	100P3807
60	KMCC	100P1396
64	GKN	100P3249
70	MB	100P2121
76	NPF	100P615
77	NPM	100P3214
86	PAS	100P1703
88	PGF	S700
91	PVG	
92	SIT	
95	TMF	
96	TMM	
97	VG	
98	100P252	



MARKING SEQUENCE

PART DESCRIPTION P*****

***** TO BE REPLACED WITH BATCH NUMBER

NOTE: FOR ANY SERIES WITH A 'HE' SPRING REFERENCE, IT IS REMOVED FROM THE PART MARKING SEQUENCE

FOR EXAMPLE FULL PART DESCRIPTION - 91H1-11-05-1-C-HE100
PART DESCRIPTION FOR MARKING - 91H1-11-05-1-C

EXAMPLE OF WHERE TO FIND THE SERIES CODE IN THE PART DESCRIPTION:

91H1-11-05-1-C

SERIES **91H1-11-05-1-C**
(MINIMUM 2 CHARACTERS LONG, FOUND IN TABLE ABOVE)

DIMENSIONS: mm	TOLERANCES UNLESS OTHERWISE SPECIFIED: 0 PLC ±0,40 1 PLC ±0,20 2 PLC ±0,10 ANGLES ±1° ALL FILLETS 0,4 MAX

DWN	19/07/2022	MATERIAL	N/A	HEAT TREAT	N/A
CHK	21/07/2022	TE Connectivity			
APVD	19/07/2022				
NAME	R.MCSHERRY				
PART MARK GUIDE FOR CIRCULAR BACKSHELLS (CATALOGUE PARTS)					
SCALE	2:1	SIZE	A3	PART NO	DM0113
REV	-	SHEET	4 OF 7	REV	AD

REV	-	DESCRIPTION	DATE	DWN	APVD
	-	SEE SHEET 1	-	-	-

ALL DIAMETERS 0,10
SURFACE FINISH Ra1,6 MAX
REMOVE ALL BURRS AND SHARP EDGES TO 0,1 MAX

PART MARKING GUIDE FOR CIRCULAR BACKSHELLS

PART MARKING DETAILS TABLE - **BACKSHELL SERIES REQUIRING SPECIAL MARKING or LOCATION REQUIREMENTS (N = NO / Y = YES)**

SERIES	CAGE CODE	CAGE CODE	PART DESCRIPTION	BATCH NUMBER PREFIX	PREFIX LETTER	BATCH NUMBER	DATE CODE	DATE CODE FORMAT	ADDITIONAL INFORMATION
100P449	N	-	N	N	-	N	N	-	NO MARKING REQUIRED
100P1676	N	-	N	N	-	N	N	-	NO MARKING REQUIRED
100P2268	N	-	N	N	-	N	N	-	NO MARKING REQUIRED
100P2739	N	-	Y	Y	P	Y	N	-	SPECIAL MARKING ON CUSTOMER DRAWING
100P2960	N	-	Y	Y	P	Y	N	-	MARKING LOCATION ON CUSTOMER DRAWING
100P3062	N	-	Y	Y	P	Y	N	-	MARKING LOCATION ON CUSTOMER DRAWING
100P3210	N	-	Y	Y	P	Y	N	-	MARKING LOCATION ON CUSTOMER DRAWING
100P3213	N	-	Y	Y	P	Y	N	-	MARKING LOCATION ON CUSTOMER DRAWING
100P3337	N	-	Y	Y	P	Y	N	-	MARKING LOCATION ON CUSTOMER DRAWING
100P3610	N	-	Y	Y	P	Y	N	-	MARKING LOCATION ON CUSTOMER DRAWING
100P3623	N	-	Y	Y	P	Y	N	-	SPECIAL MARKING ON CUSTOMER DRAWING
100P3658	N	-	Y	Y	P	Y	N	-	MARKING LOCATION ON CUSTOMER DRAWING
100P3707	N	-	Y	Y	P	Y	N	-	MARKING LOCATION ON CUSTOMER DRAWING
100P308	N	-	Y	Y	P	Y	N	-	MARKING LOCATION ON CUSTOMER DRAWING
AP	N	-	Y	Y	P	Y	N	-	MARKING LOCATION ON CUSTOMER DRAWING
PMTAK	Y	06090	Y	Y	P	Y	N	-	MARKING LOCATION ON CUSTOMER DRAWING

EXAMPLE OF WHERE TO FIND THE SERIES CODE IN THE PART DESCRIPTION:

100P1138-14-1-C

SERIES _____
(MINIMUM 2 CHARACTERS LONG, FOUND IN TABLE ABOVE)

DIMENSIONS: mm	TOLERANCES UNLESS OTHERWISE SPECIFIED: 0 PLC ±0,40 1 PLC ±0,20 2 PLC ±0,10 ANGLES ±1° ALL FILLETS 0,4 MAX

DWN	19/07/2022	MATERIAL	N/A	HEAT TREAT	N/A
CHK	21/07/2022	TE Connectivity			
APVD	19/07/2022				
NAME	R.MCSHERRY				
PART MARK GUIDE FOR CIRCULAR BACKSHELLS (CATALOGUE PARTS)					
SCALE	2:1	SIZE	A3	PART NO	DM0113
REV	-	SHEET	6 OF 7	REV	AD

-	SEE SHEET 1	-	-	-
REV	DESCRIPTION	DATE	DWN	APVD

ALL DIAMETERS 0,10
SURFACE FINISH Ra1,6 MAX
REMOVE ALL BURRS AND SHARP EDGES TO 0,1 MAX

DM0113

THIS DRAWING IS A CONTROLLED DOCUMENT

THIS INFORMATION IS CONFIDENTIAL AND PROPRIETARY TO TYCO ELECTRONICS CORPORATION AND ITS WORLDWIDE SUBSIDIARIES AND AFFILIATES (TE). IT MAY NOT BE DISCLOSED TO ANYONE, OTHER THAN TE PERSONNEL, WITHOUT AUTHORIZATION FROM TE (www.TE.com).

