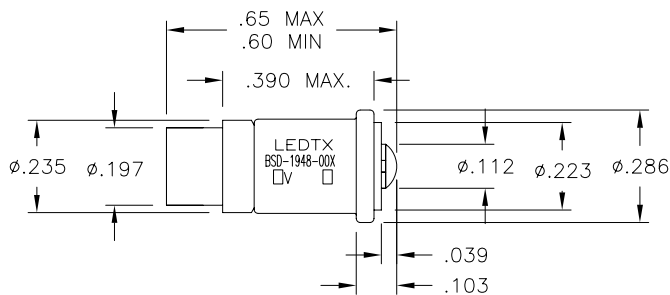
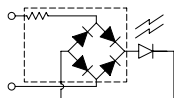
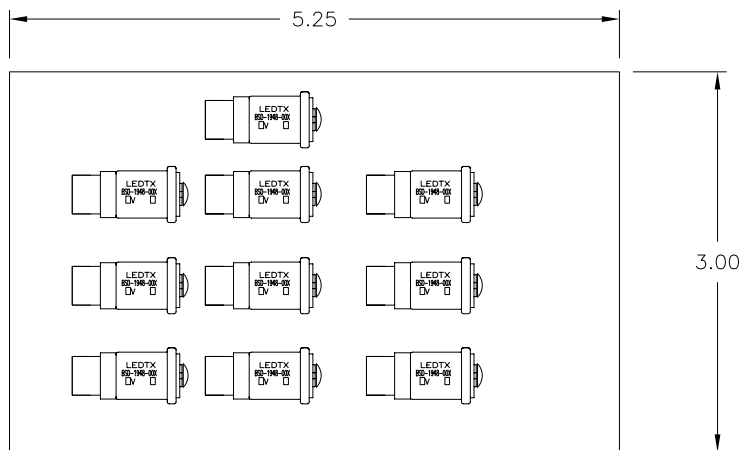


LTR	REVISION	DATE	APPD
1	NOT RELEASED AS WAITING FOR CUSTOMER APPROVAL PER MR. LODHIE. ECR# 053006-SAR01	08-16-06	GP



PACKAGING INSTRUCTIONS:  
BAG AND TAG AS SHOWN  
1 BAG = 10 PCS.  
REF. LABEL

STANDARD LEDTRONICS BAG



BAG  
+  
LABEL

LEDtronics, inc.  
310-534-1505

**BSD-1948-XXX**

LOT XX XXXXXX

U/WT: XX  
S/Sz: XX  
MM/DD/YY QTY: 1 BAG = 10 PCS.  
P.O.# XXXXX

NOTES:

- 1. LAMP OPERATING TEMP: -20°C TO + 65°C
- STORAGE TEMP: -40°C TO + 100°C

BSD-1948-001	RED	10 PCS.	28	0.4W	7.6fcd	628	641	120	.71	.30	5980-01-524-4312	
BSD-1948-002	YELLOW	10 PCS.	28	0.56W	21fcd	593	597	120	.60	.40	5980-01-524-4319	
BSD-1948-003	WHITE	10 PCS.	28	0.45W	41fcd	582	573	120	.44	.41	5980-01-524-4483	
BSD-1948-004	GREEN	10 PCS.	28	0.36W	47fcd	524	517	120	.18	.67	5980-01-524-4486	
LEDTRONICS PART NO.	COLOR EMITTED	QTY	ELECTRICAL TEST							CROMATICITY COORDINATES		NATIONAL STOCK NUMBER
			VOLTS typ	Power typ	Switch Lens fcd (typ)	λDOM nm ±3nm	λP nm ±3nm	VIEW ANGLE 2θ1/2	X±5%	Y±5%		

**LED**<sup>®</sup>  
LEDTRONICS,™ INC.  
23105 KASHIWA COURT  
TORRANCE, CA 90505

**-PROPRIETARY-**  
This document contains Proprietary information of LEDTRONICS,™ INC. It may not be copied, used or disclosed for any purpose without the prior express written consent of LEDTRONICS,™ INC.

.XXX ± .010 TOLERANCE PER ANSI-Y14.5  
.XX ± .025 (UNLESS OTHERWISE STATED)  
ANGLES ± 0°,30'  
FRACT. ± 1/32

TITLE						
<b>BSD-1948-00X</b>						
DWG NO	SCALE	SHEET	DATE			
B1948001	2:1	1 OF 1	08-21-03			
CODE IDENT NO.	DWG BY	CHK BY	QA	MFG	CUSTOMER	
8Z410	RM	PL 08-16-06				