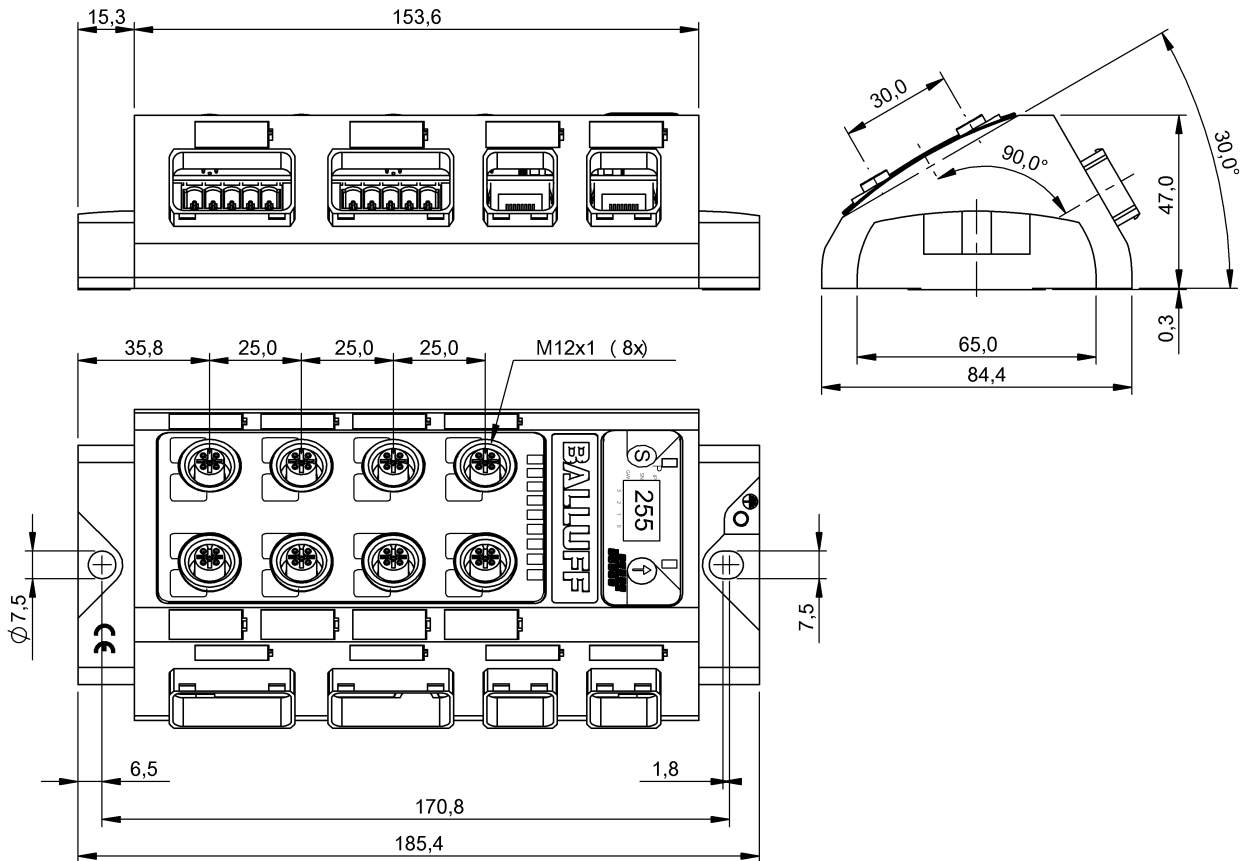


Network Blocks

BNI PNT-508-105-Z031

Order Code: BNI007K

BALLUFF



Basic features

Approval/Conformity	CE UKCA WEEE cULus
Scope of delivery	Part label (20x) Port cover M12 (4x) Grounding strap Lock washer Short guide M4x6 screw
Style	Two-row
Supported web browsers	Google Chrome Mozilla Firefox

Display/Operation

Actuator supply UA, indicator	Green LED
IO-Link communication indicator	Green LED
Sensor supply US indicator	Green LED
Switching function display	LED yellow

Electrical connection

Connection (COM 1)	Push-Pull RJ45, 8-pin
Connection (COM 2)	Push-Pull RJ45, 8-pin
Connection (supply voltage IN)	Push/Pull, 5-pin
Connection (supply voltage OUT)	Push/Pull, 5-pin
Connection slots	8x M12x1-Female, 5-pin, A-coded
Contact, surface protection	NiAu

Electrical data

Address range	IPV4
Configurable inputs/outputs	yes
Current sum UA, actuator	16.0 A
Current sum US, sensor	16.0 A
IO-Link function	Master
Operating voltage Ub	18...30.2 VDC
Output current max.	2 A
Rated operating voltage Ue DC	24 V
Transfer rate	10/100 Mbit/s

Network Blocks
BNI PNT-508-105-Z031
Order Code: BNI007K



Environmental conditions

Ambient temperature	-5...70 °C
Ambient temperature UL max.	45 °C
EN 60068-2-6, Vibration	5...61 Hz, constant amplitude 1 mm 61...500 Hz, constant acceleration 15 g
IP rating	IP67, when threaded in
Storage temperature	-25...70 °C

Interface

Auxiliary interfaces	8x IO-Link
Conformity class	B
Digital inputs	16x PNP, Type 2
Digital outputs	16x PNP
Fast Start-Up (FSU)	yes
IO-Link version	1.1
Interface	Profinet I/O
Netload class	III
Port-class	Type A

Material

Gasket, material	FKM 75
Housing material	Zinc, Die casting
Housing shield	yes
Surface protection	Cu 15 µm Ni 15 µm

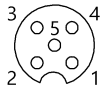
Mechanical data

Dimension	84.4 x 47 x 185.4 mm
Mounting ground strap	M4
Mounting part	2-hole screw mount

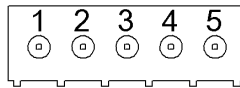
Remarks

See short guide

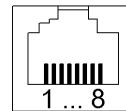
Connector Drawings



IO-Link
 PIN 1: +24V
 PIN 2: In-/output/Diagnostics
 PIN 3: 0V
 PIN 4: IO-Link/In-/Output
 PIN 5: n.c.



Power
 PIN 1: +24V, US
 PIN 2: GND
 PIN 3: +24V, UA
 PIN 4: GND
 PIN 5: Function ground



Ethernet port
 PIN 1: Tx+
 PIN 2: Tx-
 PIN 3: Rx+
 PIN 4: n.c.
 PIN 5: n.c.
 PIN 6: Rx-
 PIN 7: n.c.
 PIN 8: n.c.