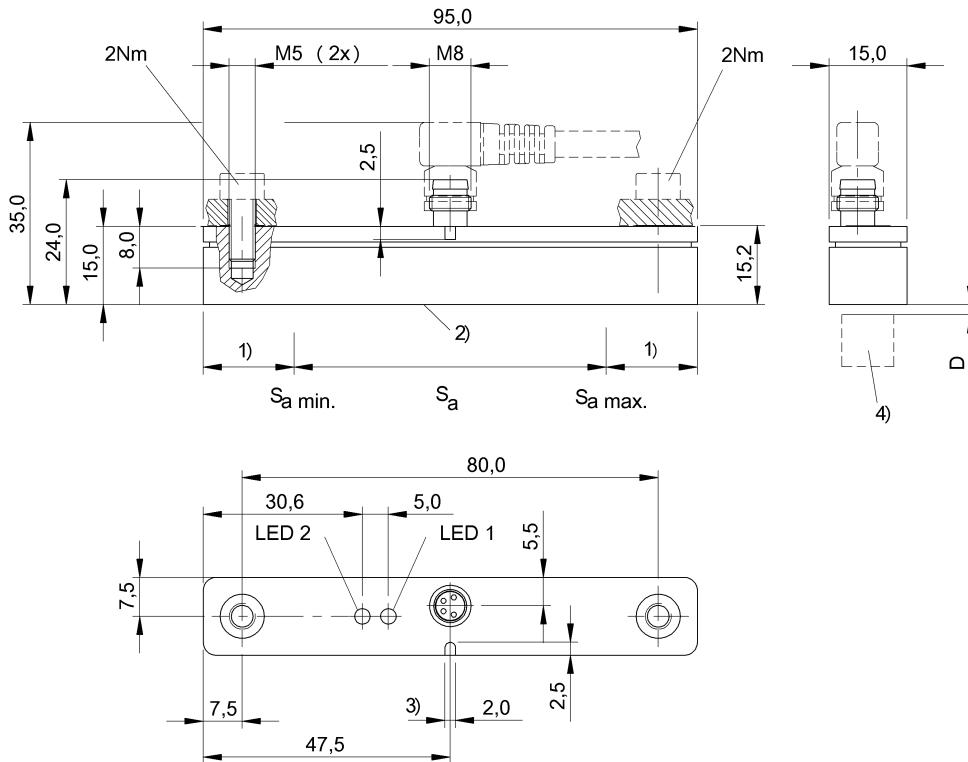


BIL EMD0-T060A-01-S75 BIL0006



1) Non-usable area 2) Sensing surface 3) Index slot 4) Encoder



Display/Operation

Power indicator yes

Protected against miswiring	yes
Rated frequency, AC	DC
Rated insulation voltage U_i	75 V DC
Rated operating voltage U_e DC	24 V
Repeat accuracy per BWN	±60.0 µm

Electrical connection

Connection M8x1
Polarity reversal protected yes
Short-circuit protection yes

Environmental conditions

Ambient temperature	-10...75 °C
Protection type IEC 60529	IP67

Electrical data

Limit frequency -3 dB	1500 Hz
Load resistance R_L	2000...500 Ohm
MTTF (40 °C)	280 a
Operating voltage U_b DC (Ia)	10...30 V
Operating voltage U_b DC (Ja)	15...30 V
Output current at S_e	12 mA
Output current at S_I max.	20 mA
Output current at S_I min.	4 mA
Output voltage at S_e	5 V
Output voltage at S_I max.	10 V
Output voltage at S_I min.	0 V
Pollution degree	3

Functional safety

Functional safety	no
Mission Time	20 a

General data

Approval/Conformity	CE cULus
Basic standard	BWN PR 44 IEC 60947-5-2 IEC 60947-5-7

BIL EMD0-T060A-01-S75 BIL0006

Material

Housing material PA

Mechanical data

Dimension 95 x 15 x 24 mm

Output/Interface

Analog output Analog, voltage, 0...10 V
Analog, current, 4...20 mA

Range/Distance

Linearity range SI 5...55 mm
Measuring range 5...55 mm
Measuring speed max. 5 m/s
Non-linearity max. ± 0.6 mm

Repeat accuracy 0.5 % FS
Response time max. 1 ms
Ripple max. (% of Ue) 10 %
Temperature drift max. from end value ± 2.5 %

Remarks

LED 1: Power LED 2: Position marker detection
Only for applications per NFPA 79 (machines with a supply voltage of maximum 600 V). Appropriate connectors can be obtained from Balluff.
Se = Effective point (Index slot). Specifications apply only when using recommended position encoder: Position encoder BIL 000-MH-A, D = 2 mm
Position encoder BIL 001-MH-A, D = 1 mm position encoder axis vertical to sensing surface. Other magnets on request. The characteristic data are valid only within the defined working range Sa at distance D for the respective position encoder.
Load resistance RL max. applies for Ub min. 16V.

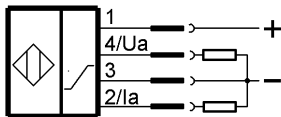
For further information on MTTF/B10d, please refer to the MTTF / B10d Certificate.

Specification of the MTTF value and the B10d value do not represent any binding quality and/or life expectancy guarantees.

Connector view



Wiring Diagram



BIL EMD0-T060A-01-S75

BIL0006

Diagram

