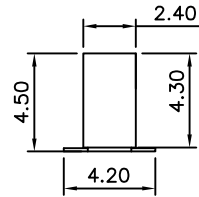
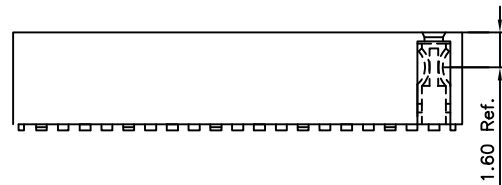


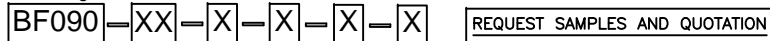
RECOMMENDED PCB LAYOUT



CONTACTS	DIMENSIONS	
	A	B
2	2.0	4.6
3	4.0	6.6
4	6.0	8.6
5	8.0	10.6
6	10.0	12.6
7	12.0	14.6
8	14.0	16.6
9	16.0	18.6
10	18.0	20.6
11	20.0	22.6
12	22.0	24.6
13	24.0	26.6
14	26.0	28.6
15	28.0	30.6
16	30.0	32.6
17	32.0	34.6
18	34.0	36.6
19	36.0	38.6
20	38.0	40.6
21	40.0	42.6
22	42.0	44.6
23	44.0	46.6
24	46.0	48.6
25	48.0	50.6
26	50.0	52.6
27	52.0	54.6
28	54.0	56.6
29	56.0	58.6
30	58.0	60.6
31	60.0	62.6
32	62.0	64.6
33	64.0	66.6
34	66.0	68.6
35	68.0	70.6
36	70.0	72.6
37	72.0	74.6
38	74.0	76.6
39	76.0	78.6
40	78.0	80.6

SPECIFICATIONS 规格
 CURRENT RATING 电流额定值: 2 AMP
 INSULATOR RESISTANCE 绝缘电阻值: 1000 MEGOHMS MIN.
 CONTACT RESISTANCE 接触电阻值: 20mOHMS MAX.
 DIELECTRIC WITHSTANDING 耐电压: AC 500 V
 OPERATING TEMPERATURE 工作温度: -40°C TO +105°C
 CONTACT MATERIAL 端子物料: COPPER ALLOY
 INSULATOR MATERIAL 绝缘体物料:
 STANDARD 标准物料: POLYAMIDE 聚酰胺, NYLON 6T, UL 94-V0
 OPTIONS 可选物料: POLYESTER 聚酯, LCP, UL 94-V0
SOLDERING PROCESS 可焊性:
 NYLON 6T (STANDARD 标准物料) -
 IR REFLOW 回流焊: 260°C for 10 sec.
 WAVE 波峰焊: 230°C for 5-10 sec.
 MANUAL SOLDER 人工焊接: 350°C for 3-5 sec
 LCP (OPTION 可选物料) -
 IR REFLOW 回流焊: 260°C for 10 sec. **△**
 WAVE 波峰焊: 250°C for 5-10 sec.
 MANUAL SOLDER 人工焊接: 350°C for 3-5 sec **△**

Ordering Grid



△ No. of Contacts
02 to 40

Contact Plating
 A = Gold Flash All Over
 B = Selective Gold Flash Contact Area/
 Tin On Tail
 C = Tin All Over
 G = 10µ" Gold Contact Area/Tin On Tail
 I = 30µ" Gold Contact Area/Tin On Tail
Standard = Gold Flash All Over

Type
 1 = Type B1
 2 = Type B2

Insulator Material
N = Nylon 6T (Standard)
 L = LCP

△ **Packing Options**
C = Tape and Reel with Film (Standard)
 B = Tape and Reel with Cap
 D = Tube
 E = Tube with Cap
 F = Tube with Film

△ For bottom entry applications, stringent soldering control & pin alignment are required as lead to pad misalignment could cause incorrect mating.

MATES WITH 配套之母座 (SUBJECT TO PIN LENGTH 在端子长度适合的条件下):

- BF020 BF021 BF025 BF035 BF036
- BF040 BF130

By	LYH	PN	CB	DR	SA
DETAIL	DRAWING RELEASE	NOTE ADDED	PACKING OPTIONS CHANGED	CHANGE TO SOLDER TEMP. INFORMATION	No. OF CONTACTS CHANGED
REV DATE	A 31/10/07	B 20/04/09	C 27/04/09	D 05/08/09	E 15/02/10



Tolerances (Except as noted)	Part Number:-	Date:-
Dimensions in mm	BF090	31 OCT 07
X. ± 0.30 X. ± 5°	Description:-	
X.X ± 0.20 X. ± 2°	2.0mm PITCH SOCKET, SINGLE ROW, SURFACE MOUNT, DUAL ENTRY	
X.XX ± 0.15 .XX ± 1°		
X.XXX ± 0.10 .XXX ± 0.5°		
Third Angle Projection	© THIS DRAWING IS CONFIDENTIAL AND MUST NOT BE COPIED OR DISCLOSED WITHOUT WRITTEN CONSENT	

GCT				
www.globalconnectortechology.com				
Scale NTS	Revision E	Material See Note	Drawn by LYH	Sheet No. E & OE 1/1