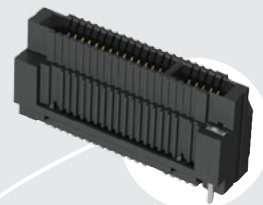


BEC5C-070-02-L-SM-2-V-A



BEC5C-040-02-L-SM-2-V-A

BEC5C SERIES

(0.50 mm) .0197"

LOW COST HIGH-DENSITY EDGE CARD

SPECIFICATIONS

For complete specifications and recommended PCB layouts see www.samtec.com?BEC5C

Insulator Material:

Black LCP

Contact Material:

Phosphor Bronze

Plating:

Au or Sn over

50 μ" (1.27 μm) Ni

Operating Temp Range:

-55 °C to +125 °C

Current Rating:

1.5 A per pin

(4 adjacent pins powered)

Voltage Rating:

200 VAC

RoHS Compliant:

Yes

Mates with:

(1.60 mm) .062" and

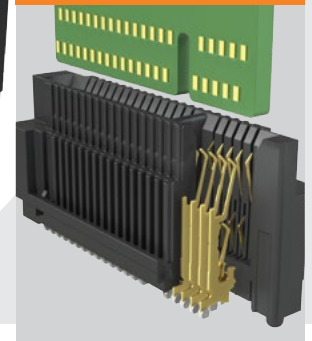
(2.36 mm) .093" thick cards



Lead-free solder crimps



APPLICATION



HIGH-SPEED CHANNEL PERFORMANCE

BEC5C

Rating based on Samtec reference channel. For full SI performance data visit Samtec.com or contact SIG@samtec.com

14
G b p s

Weld tab

PROCESSING

Lead-Free Solderable:

Yes

SMT Lead Coplanarity:

(0.15 mm) .006" max

RECOGNITIONS

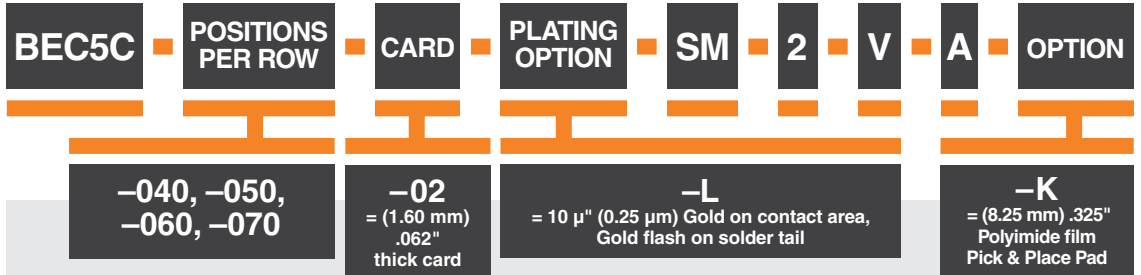
For complete scope of recognitions see www.samtec.com/quality



FILE NO. E111594

ALSO AVAILABLE (MOQ Required)

- Other platings
- Contact Samtec.

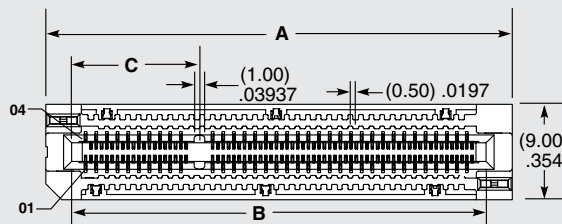


Notes:
Patented

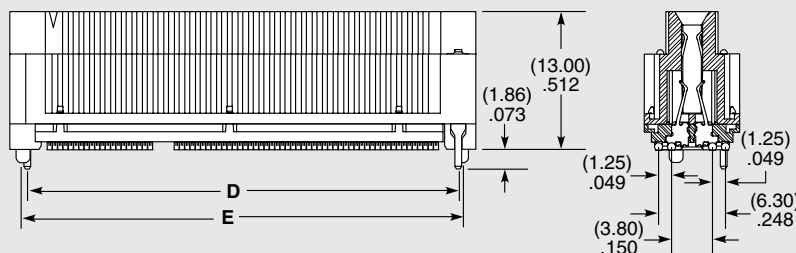
While optimized for 50 Ω applications, this connector with alternative signal/ground patterns may also perform well in certain 75 Ω applications. Contact Samtec for further information.

May not be suitable for hot plugging application, contact Samtec engineering.

Some sizes, styles and options are non-standard, non-returnable.



POSITIONS PER ROW	A	B	C	D	E
-040	(29.00) 1.142	(24.15) .951	(7.08) .279	(25.70) 1.012	(26.50) 1.043
-050	(34.00) 1.339	(29.15) 1.148	(7.08) .279	(30.70) 1.209	(31.50) 1.240
-060	(39.00) 1.535	(34.15) 1.344	(12.08) .475	(35.70) 1.406	(36.50) 1.437
-070	(44.00) 1.732	(39.15) 1.541	(12.08) .475	(40.70) 1.602	(41.50) 1.634



Due to technical progress, all designs, specifications and components are subject to change without notice.