

1) Sensing surface, 2) Housing, 3) Potentiometer sealed



### Basic features

Approval/Conformity	CE UKCA WEEE
Basic standard	IEC 60947-5-2
Series	D22

### Electrical connection

Cable length L	2 m
Conductor cross-section	0.14 mm <sup>2</sup>
Number of conductors	3
Polarity reversal protected	yes
Protection against device mix-ups	yes
Short-circuit protection	yes

### Electrical data

Operating voltage U <sub>b</sub>	12...30 VDC
Rated insulation voltage U <sub>i</sub>	75 V DC
Rated operating current I <sub>e</sub>	300 mA
Ripple max. (% of U <sub>e</sub> )	10 %
Switching frequency	100 Hz
Utilization category	DC -13
Voltage drop static max.	1.2 V

### Environmental conditions

Ambient temperature	-30...70 °C
IP rating	IP64

### Interface

Switching output	PNP normally open (NO)
------------------	------------------------

### Material

Housing material	1.4301 stainless steel
Material jacket	PUR
Material sensing surface	PTFE

### Mechanical data

Dimension	Ø 22 x 16 mm
Installation	for flush mounting
Size	D22.0

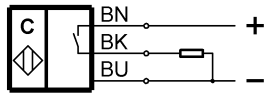
### Range/Distance

Hysteresis H max. (% of S <sub>r</sub> )	15.0 %
Measuring range	5.4...6.6 mm
Rated operating distance S <sub>n</sub>	6.6 mm
Repeat accuracy max. (% of S <sub>r</sub> )	2.0 %
Temperature drift max. (% of S <sub>r</sub> )	10 %

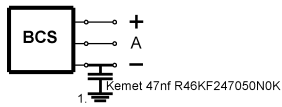
### Remarks

The potentiometer does not have a fixed stop, but can be turned endlessly without destroying anything.  
 If no change in the switching signal is detected, the potentiometer should be turned forwards or backwards until a signal change occurs at the output.

## Wiring Diagrams



## Installation remarks



1) Machine GND