

1) Sensing surface, 2) Housing, 3) Cover



Basic features

Approval/Conformity	CE UKCA WEEE
Basic standard	IEC 60947-5-2
Scope of delivery	Nut (2x)
Sensitivity	adjustable on base unit
Series	M18

Electrical connection

Connection	Special connector-Special connector
Polarity reversal protected	not relevant
Short-circuit protection	not relevant

Electrical data

Switching frequency	50 Hz
Utilization category	DC -13

Environmental conditions

Ambient temperature	-180...250 °C
IP rating	IP66, IP54 at connector output

Remarks

Required accessories, sensor amplifier BAE SA-... and connection cable BCC Z003-020

Interface

Interface	Special interface
-----------	-------------------

Material

Cover material	1.4301 stainless steel
Housing material	Brass, Chrome-plated
Material sensing surface	PTFE

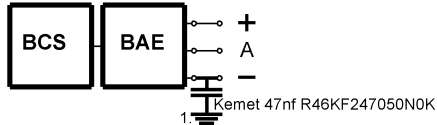
Mechanical data

Dimension	Ø 18 x 65 mm
Installation	non-flush
Size	M18x1
Thread (A)	M18x1
Tightening torque	60 Nm

Range/Distance

Hysteresis H max. (% of Sr)	15.0 %
Measuring range	1...10 mm
Rated operating distance S _n	10 mm
Repeat accuracy max. (% of Sr)	2.0 %

Installation remarks



1) Machine GND