

1) Sensing surface, 2) Housing, 3) Cover



### Basic features

Approval/Conformity	CE UKCA WEEE
Basic standard	IEC 60947-5-2
Scope of delivery	Nut Screwdriver Short guide
Sensitivity	media-dependent, adjustable
Series	S01

### Display/Operation

Function indicator	yes
Power indicator	no

### Electrical connection

Polarity reversal protected	yes
Protection against device mix-ups	yes
Short-circuit protection	yes

### Electrical data

Load capacitance max. at $U_e$	10 $\mu$ F
No-load current $I_o$ max. at $U_e$	15 mA
Operating voltage $U_b$	10...35 VDC
Rated insulation voltage $U_i$	75 V DC
Rated operating current $I_e$	100 mA
Rated operating voltage $U_e$ DC	24 V
Ready delay $t_v$ max.	300 ms
Residual current $I_r$ max.	200 $\mu$ A
Ripple max. (% of $U_e$ )	10 %
Switching frequency	5 Hz
Utilization category	DC -13
Voltage drop static max.	2.7 V

### Environmental conditions

Ambient temperature	-30...125 °C
Contamination scale	2
IP rating	IP67, sensing surface: IP68 10 bar

### Functional safety

MTTF (40 °C)	873 a
--------------	-------

### Interface

Switching output	PNP normally closed (NC)
------------------	--------------------------

Capacitive Sensors  
**BCS S01T401-POCFNG-KM16-T02**  
**Order Code: BCS006J**



**Material**

<b>Cover material</b>	Aluminium, Die casting
<b>Housing material</b>	1.4305 stainless steel, Connection thread
<b>Material sensing surface</b>	PTFE

**Mechanical data**

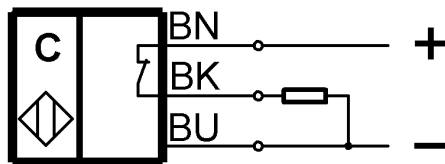
<b>Dimension</b>	54.8 x 48.5 x 106 mm
<b>Installation</b>	non-flush
<b>Pressure rating max.</b>	10 bar
<b>Thread (A)</b>	M18x1
<b>Tightening torque</b>	1.5 Nm

**Remarks**

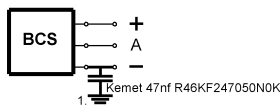
The potentiometer does not have a fixed stop, but can be turned endlessly without destroying anything.  
 If no change in the switching signal is detected, the potentiometer should be turned forwards or backwards until a signal change occurs at the output.  
 For more information about MTTF and B10d see MTTF / B10d Certificate

Indication of the MTTF- / B10d value does not represent a binding composition and/or life expectancy assurance; these are simply experiential values with no warranty implications. These declared values also do not extend the expiration period for defect claims or affect it in any way.

**Wiring Diagrams**



**Installation remarks**



1) Machine GND