

1) Sensing surface, 2) Housing, 3) Potentiometer, 4) LED function indicator



### Basic features

Approval/Conformity	CE UKCA cULus WEEE
Basic standard	IEC 60947-5-2
Sensitivity	Switching distance adjustable
Series	D30

### Electrical connection

Cable length L	2 m
Conductor cross-section	0.14 mm <sup>2</sup>
Number of conductors	3
Polarity reversal protected	yes
Protection against device mix-ups	yes
Short-circuit protection	yes

### Electrical data

Operating voltage U <sub>b</sub>	10...35 VDC
Rated insulation voltage U <sub>i</sub>	75 V DC
Rated operating current I <sub>e</sub>	300 mA
Ripple max. (% of U <sub>e</sub> )	10 %
Switching frequency	100 Hz
Utilization category	DC -13
Voltage drop static max.	0.8 V

### Environmental conditions

Ambient temperature	-30...70 °C
IP rating	IP67

### Functional safety

MTTF (40 °C)	230 a
--------------	-------

### Interface

Switching output	NPN normally closed (NC)
------------------	--------------------------

### Material

Housing material	1.4301 stainless steel
Material jacket	PUR
Material sensing surface	PTFE

### Mechanical data

Dimension	Ø 30 x 4 mm
Installation	for flush mounting
Size	D30.0

### Range/Distance

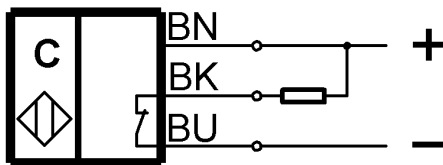
Hysteresis H max. (% of S <sub>r</sub> )	15.0 %
Measuring range	2...15 mm
Rated operating distance S <sub>n</sub>	15 mm
Repeat accuracy max. (% of S <sub>r</sub> )	2.0 %
Temperature drift max. (% of S <sub>r</sub> )	20 % [-5...55 °C]

### Remarks

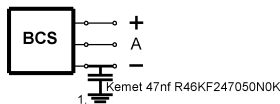
The potentiometer does not have a fixed stop, but can be turned endlessly without destroying anything.  
If no change in the switching signal is detected, the potentiometer should be turned forwards or backwards until a signal change occurs at the output.  
For more information about MTTF and B10d see MTTF / B10d Certificate

Indication of the MTTF- / B10d value does not represent a binding composition and/or life expectancy assurance; these are simply experiential values with no warranty implications. These declared values also do not extend the expiration period for defect claims or affect it in any way.

### Wiring Diagrams



### Installation remarks



1) Machine GND