

1) Sensing surface, 2) Housing



Basic features

Approval/Conformity	CE UKCA cULus WEEE
Basic standard	IEC 60947-5-2
Sensitivity	adjustable on base unit
Series	F01

Electrical connection

Cable length L	2 m
Connection	Special connector-Special connector
Polarity reversal protected	not relevant
Short-circuit protection	not relevant

Electrical data

Operating voltage U_b	4...8 VDC
Rated insulation voltage U_i	75 V DC
Ripple max. (% of U_e)	10 %
Switching frequency	100 Hz
Utilization category	DC -13

Environmental conditions

Ambient temperature	0...60 °C
IP rating	IP60

Interface

Interface	Special interface
-----------	-------------------

Material

Housing material	PC
Material jacket	PUR
Material sensing surface	PUR

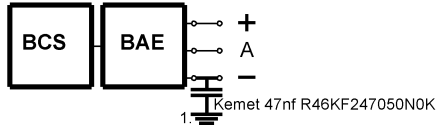
Mechanical data

Dimension	90 x 16 x 4 mm
Installation	flush with container outer wall

Range/Distance

Hysteresis H max. (% of S_r)	15.0 %
Measuring range	2...10 mm
Rated operating distance S_n	10 mm
Real switching distance s_r	10 mm
Repeat accuracy max. (% of S_r)	2 %
Temperature drift max. (% of S_r)	20 %

Installation remarks



1) Machine GND