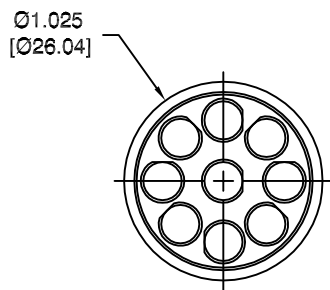
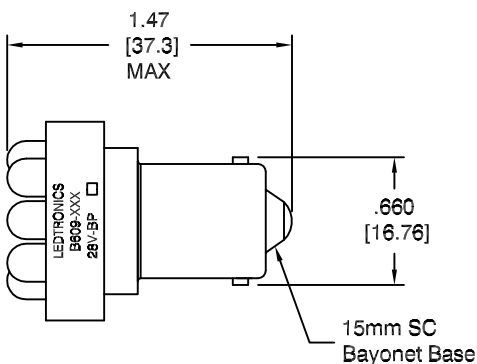


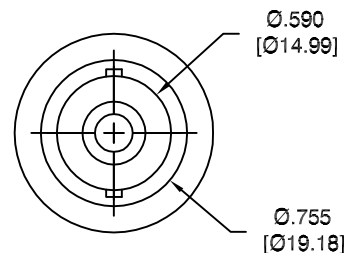
LTR	REVISION	DATE	APPD
B	120318-HF01: ADDED P/N: B609-OCW-028S	12-03-18	HF



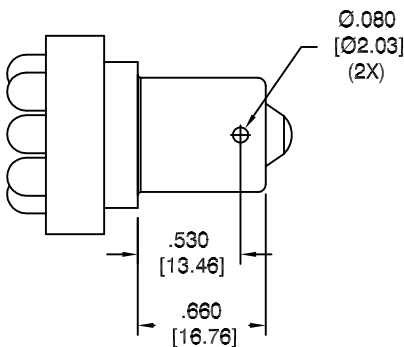
TOP VIEW



SIDE VIEW



REAR VIEW



ROTATED 90°



NOTES:

1. ALL DIMENSIONS ARE IN INCHES [MILLIMETERS].
2. ALL PARTS WITH (*) ARE "RoHS" CERTIFIED.
3. SLEEVE MATERIAL: RYNITE FR530
4. BASE MATERIAL: BRASS

REVISION NOTIFICATION	
<input type="checkbox"/>	DLC
<input type="checkbox"/>	UL/ETL
<input type="checkbox"/>	MADE IN USA
<input type="checkbox"/>	CUSTOMER _____
<input type="checkbox"/>	OTHER _____
REDLINE CHECKLIST	
<input type="checkbox"/>	REDLINE(YES)
<input type="checkbox"/>	DATE: _____
<input type="checkbox"/>	INITIATED BY: _____
<input type="checkbox"/>	ECR REQUIRED YES <input type="checkbox"/> NO <input type="checkbox"/>
<input type="checkbox"/>	WORK ORDER# _____

ELECTRICAL-OPTICAL CHARACTERISTICS (Ta = 25°C)

LEDTRONICS PART NO.	COLOR EMITTED	INPUT VOLTAGE, V (Tested@28Vdc)	POWER (W)	CURRENT (A)	MAXIMUM CANDELA	TOTAL LUMENS	λP nm COLOR TEMP. (K)	VIEWING ANGLE (FULL BEAM WIDTH @ 50% INTENSITY)
B609-OAG-028N	AQUA GREEN	24/28Vdc	0.8 W	0.045 A	153cd	28 lm	518	15°
B609-OER-028N	HI-EFF RED	24/28Vdc	0.8 W	0.045 A	57cd	12 lm	635	15°
B609-OCW-028S*	COOL WHITE	24/28Vdc	-	0.045 A	-	-	10000K	17°
B609-TPW-028S*	TRUE WHITE	24/28Vdc	1.4 W	0.045 A	89cd	80 lm	5000K	20°
B609-XCW-028S*	COOL WHITE	24/28Vdc	0.8 W	0.045 A	95cd	27 lm	8000K	20°

LED[®]
LEDTRONICS, INC.[™]
 23105 KASHIWA COURT
 TORRANCE, CA 90505

-PROPRIETARY-
 This document contains Proprietary information of LEDTRONICS, INC. It may not be copied, used or disclosed for any purpose without the prior express written consent of LEDTRONICS, INC.
 .XXX ± .010 TOLERANCE PER ANSI-Y14.5 (UNLESS OTHERWISE STATED)
 .XX ± .025
 ANGLES ± 0°,30'
 FRACT. ± 1/32

TITLE B609-XXX-028X							
DWG NO B609-28V-BP		SCALE 1:1		SHEET 1 OF 1		DATE 03-15-10	
CODE IDENT NO. 8Z410	DWG BY GP 03-15-10	CHK BY	QA EE 12-13-18	MFG LD 12-13-18	R&D UF 12-13-18		