



Wire Protection & Management > Interconnect Devices > SolderSleeve Shield Terminators



Operating Temperature (Max): 125 °C

Expanded Inside Diameter (Min): 4.57 mm [.18 in]

Recovered Inside Diameter (Max): 1.78 mm [.07 in]

Pre-Installed Lead: No

Wire Temperature (Max): 85 °C

## Features

### Configuration Features

Pre-Installed Lead	No
--------------------	----

### Dimensions

Expanded Inside Diameter (Min)	4.57 mm [.18 in]
Recovered Inside Diameter (Max)	1.78 mm [.07 in]

### Usage Conditions

Operating Temperature (Max)	125 °C
Wire Temperature (Max)	85 °C

## Product Compliance

[For compliance documentation, visit the product page on TE.com>](#)

EU RoHS Directive 2011/65/EU	Compliant
EU ELV Directive 2000/53/EC	Compliant
China RoHS 2 Directive MIIT Order No 32, 2016	No Restricted Materials Above Threshold
EU REACH Regulation (EC) No. 1907/2006	Current ECHA Candidate List: JUNE 2024 (241) Candidate List Declared Against: JAN 2024 (240) Does not contain REACH SVHC
Halogen Content	Low Halogen - Br, Cl, F, I < 900 ppm per homogenous material. Also BFR/CFR/PVC Free

Solder Process Capability

Not applicable for solder process capability

Product Compliance Disclaimer

This information is provided based on reasonable inquiry of our suppliers and represents our current actual knowledge based on the information they provided. This information is subject to change. The part numbers that TE has identified as EU RoHS compliant have a maximum concentration of 0.1% by weight in homogenous materials for lead, hexavalent chromium, mercury, PBB, PBDE, DBP, BBP, DEHP, DIBP, and 0.01% for cadmium, or qualify for an exemption to these limits as defined in the Annexes of Directive 2011/65/EU (RoHS2). Finished electrical and electronic equipment products will be CE marked as required by Directive 2011/65/EU. Components may not be CE marked. Additionally, the part numbers that TE has identified as EU ELV compliant have a maximum concentration of 0.1% by weight in homogenous materials for lead, hexavalent chromium, and mercury, and 0.01% for cadmium, or qualify for an exemption to these limits as defined in the Annexes of Directive 2000/53/EC (ELV). Regarding the REACH Regulation, the information TE provides on SVHC in articles for this part number is based on the latest European Chemicals Agency (ECHA) 'Guidance on requirements for substances in articles' posted at this URL: <https://echa.europa.eu/guidance-documents/guidance-on-reach>

## Compatible Parts

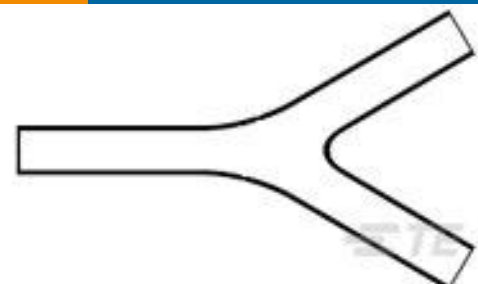


TE Part # EG8162-000  
HL1920E-230V-EURO

## Customers Also Bought



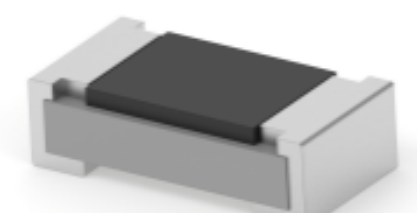
TE Part #2-32835-2  
TERMINAL,PIDG R 22-16 8



TE Part #723280-000  
381A302-71/42-0



TE Part #3-1676481-2  
CPF 0603 110R 0.1% 25PPM 1K RL



TE Part #5-2176237-8  
CPF A 0603 75K 0.1% 25PPM 5K RL



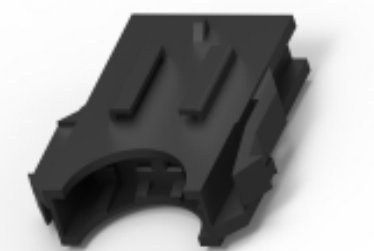
TE Part #823257-000  
342A012-4/42-0



TE Part #1544552-1  
CAPOT PC 5V



TE Part #4-2600021-3  
XRC SOCKET 16-20 AWG Ni Plated



TE Part #1544434-1  
BOITIER PC 2 VOIES

## Documents

[Product Drawings](#)  
[B-155-9003](#)



English