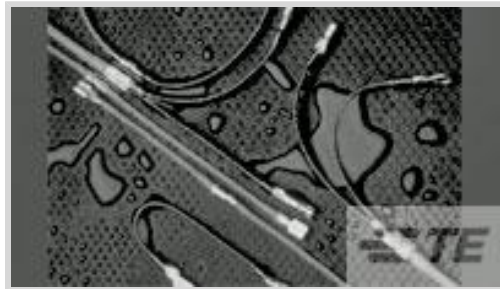




Terminals & Splices > Quick Disconnects

Quick Disconnect Terminal Type: **Tab**Wire Size: **.3 – .9 mm²**Mating Tab Width: **6.35 mm [.25 in]**Mating Tab Thickness: **.81 mm [.032 in]**

Features

Product Type Features

Compatible With Discrete Wire Type	Stranded
Insertion Force	Normal

Configuration Features

Connection Capacity	Single
---------------------	--------

Body Features

Insulation Material	Polyamide
---------------------	-----------

Contact Features

Quick Disconnect Terminal Type	Tab
Mating Tab Width	6.35 mm [.25 in]
Mating Tab Thickness	.81 mm [.032 in]
Terminal Orientation	Straight
Terminal Plating Material	Tin
Crimp Type	Compression
Barrel Type	Closed

Termination Features

Product Terminates To	Wire & Cable
-----------------------	--------------

Mechanical Attachment

Wire Insulation Support	With
-------------------------	------



Dimensions

Product Length	32 mm[1.26 in]
Compatible Insulation Diameter Range	1.4 – 4 mm
Wire Size	.3 – .9 mm ²

Usage Conditions

Insulation Option	Partially Insulated
Operating Temperature Range	-55 – 125 °C

Industry Standards

Compatible With Agency/Standards Products	UL
Compatible With Approved Standards Products	UL E87681

Packaging Features

Packaging Quantity	1000
Packaging Method	Box

Other

Barrel Color	Red
--------------	-----

Product Compliance

[For compliance documentation, visit the product page on TE.com>](#)

EU RoHS Directive 2011/65/EU	Compliant
EU ELV Directive 2000/53/EC	Compliant
China RoHS 2 Directive MIIT Order No 32, 2016	No Restricted Materials Above Threshold
EU REACH Regulation (EC) No. 1907/2006	Current ECHA Candidate List: JUNE 2024 (241) Candidate List Declared Against: JAN 2024 (240) Does not contain REACH SVHC
Halogen Content	Low Halogen - Br, Cl, F, I < 900 ppm per homogenous material. Also BFR/CFR/PVC Free
Solder Process Capability	Not applicable for solder process capability

Product Compliance Disclaimer

This information is provided based on reasonable inquiry of our suppliers and represents our current actual knowledge based on the information they provided. This information is subject to change. The part numbers that TE has identified as EU RoHS compliant have a maximum concentration of 0.1% by weight in homogenous materials for lead, hexavalent chromium, mercury, PBB, PBDE, DBP, BBP, DEHP, DIBP, and 0.01% for cadmium, or qualify for an exemption to these limits as defined in the Annexes of Directive 2011/65/EU (RoHS2). Finished electrical and electronic equipment products will be CE marked as required by Directive 2011/65/EU. Components may not be CE marked. Additionally, the part

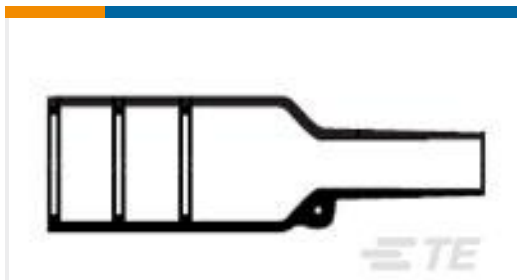
numbers that TE has identified as EU ELV compliant have a maximum concentration of 0.1% by weight in homogenous materials for lead, hexavalent chromium, and mercury, and 0.01% for cadmium, or qualify for an exemption to these limits as defined in the Annexes of Directive 2000/53/EC (ELV). Regarding the REACH Regulation, the information TE provides on SVHC in articles for this part number is based on the latest European Chemicals Agency (ECHA) 'Guidance on requirements for substances in articles' posted at this URL: <https://echa.europa.eu/guidance-documents/guidance-on-reach>

Compatible Parts



TE Part # EG8162-000
HL1920E-230V-EURO

Customers Also Bought



TE Part #165938-000
202K121-25/86-0



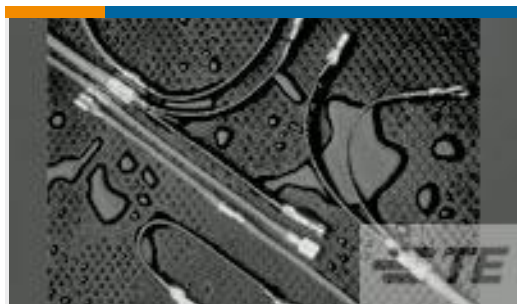
TE Part #5747301-8
37 RCPT SP/FMS INSRT



TE Part #123339-000
B-106-1402



TE Part #944773-000
B-106-1803



TE Part #084289-000
B-106-1502



TE Part #DT12S-DC
PROTECT CVR, 12P, PLG, GRY, DT



TE Part #650140-000
D-436-53



TE Part #501923-000
SO96-4-55-22-90



TE Part #926898-7
UNIV MNL SPLIT PIN LP



TE Part #5-1393104-1
KRPA-11DN-24=KRPA

Documents

Product Drawings



B-106-4631

English

Datasheets & Catalog Pages

1654025_Sec8_B-106

English

Product Specifications

Installation Procedure for Duraseal Splices and Terminals

English