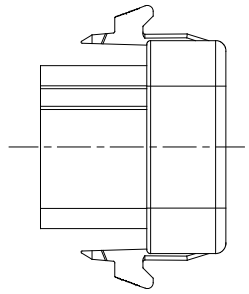
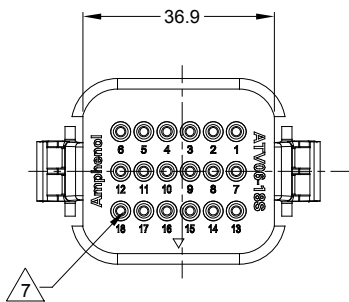
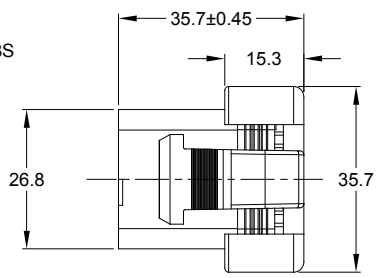
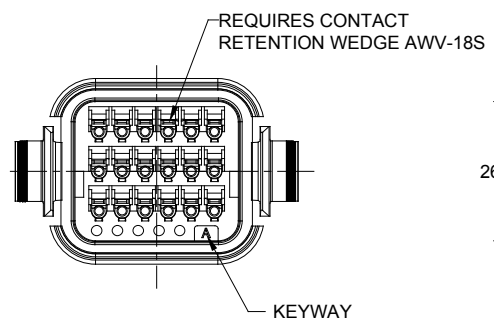
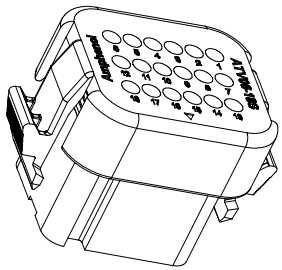
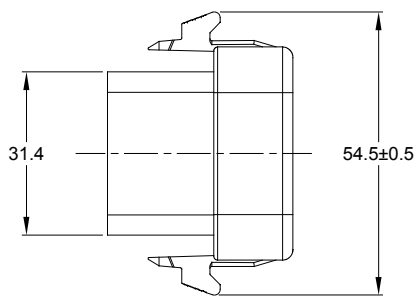


REVISIONS					
REV	ECO	DESCRIPTION	DATE	BY	APPR
A1	-	RELEASE DRAWING	26JUN18	RIMON	TOMMY
A2	-	UPDATE NOTES	19FEB19	SULLEN	TOMMY
A3	-	UPDATE REAR SEAL WIRE RANGE	05DEC19	SULLEN	TOMMY



NOTES: UNLESS OTHERWISE SPECIFIED

- SEE SHEET 2 FOR KEY ARRANGEMENTS AND COLORS.
- MATERIAL:
HOUSING: THERMOPLASTIC
SEAL: SILICONE RUBBER , COLOR: RED
- MODIFICATIONS: STANDARD DIAMETER WIRE SEAL
- SPECIFICATIONS:
4.1 CURRENT RATING: 13 AMPS
4.2 OPERATING TEMPERATURE: -55°C TO +125°C.
4.3 DIELECTRIC WITHSTANDING VOLTAGE: LESS THAN 2 MILLIAMPS CURRENT LEAKAGE @ 1500 VOLTS AC.
4.4 INSULATION RESISTANCE: 1000 MEGOHMS MIN @ 25°C.
A2 4.5 MOISTURE RESISTANCE: IP67&IP69K (MATED CONDITION)
4.6 MATING CYCLE DURABILITY: 100 CYCLES
4.7 RoHS COMPLIANT
- MATING PART: ATV02-18PX* RECEPTACLE & ATV04-18PX* RECEPTACLE (X = A,B,C,D KEYS ; * = MODIFICATIONS AND COLORS)
- ALL DIMENSIONS ARE FOR REFERENCE USE ONLY.

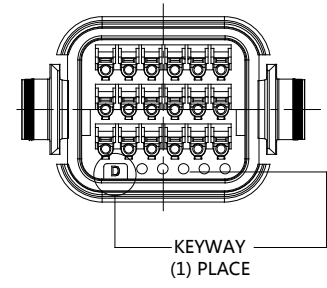
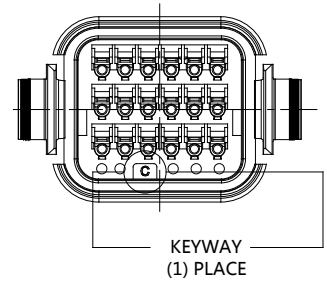
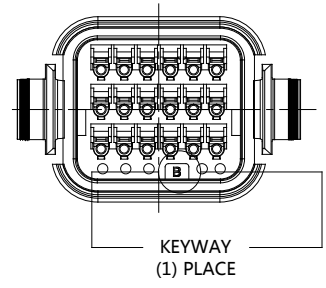
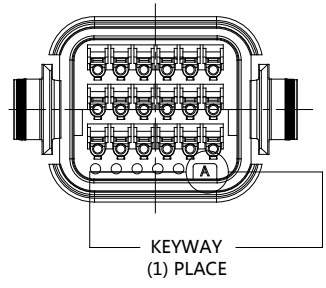
A7 CONTACT SIZE AND REAR SEAL WIRE RANGE:

CONTACT SIZE	MIN. INSUL O.D.	MAX. INSUL O.D.	TYPICAL WIRE RANGE
A3 16	2.23 mm (.088 in)	3.00 mm (.118 in)	14-20 AWG (2.0-0.5mm ²)

SEE SHEET 2		DESCRIPTION		ITEM
PART NUMBER		MATERIALS LIST		
QUANTITY				
UNLESS OTHERWISE SPECIFIED	SIGNATURES	DATE	<p>Sine Systems - www.amphenol-sine.com 44724 Morley Drive Clinton Township, MI 48036</p>	
1) All dimensions are in metric(mm).	DRAWN: SULLEN,ZHANG	05DEC19		
2) Tolerances are as follows: 1 PL DEC ±0.30 Fractions ±1/64 2 PL DEC ±0.15 Angles ±1° 3 PL DEC ±0.08	CHECKED: ORION,LI	05DEC19		
3) Note reference = A	ENGINEER:			
MATERIAL SPECIFICATIONS:	APPROVAL: TOMMY,XIE	05DEC19	PLUG, 18 PIN, ATV SERIES STANDARD DIAMETER WIRE SEAL	
PROCESS SPECIFICATIONS:	CUSTOMER:		THIS DRAWING IS SUPPLIED FOR INFORMATION ONLY. DESIGN FEATURES, SPECIFICATIONS AND PERFORMANCE DATA SHOWN HEREON ARE THE PROPERTY OF THE AMPHENOL CORPORATION. NO RIGHTS OF REPRODUCTION ARE IMPLIED. ALL DIMENSIONS ARE SUBJECT TO NORMAL MANUFACTURING VARIATIONS.	
NEXT ASSY:			SIZE: B TYPE: C- SCALE: NONE	DWG NO: ATV06-18SX REVISION: A3
			SHEET 1	OF 2

TITLE: PLUG, 18 PIN, ATV SERIES, STANDARD DIAMETER WIRE SEAL
 DWG NO: ATV06-18SX
 REV: A3
 SH: 1
 OF: 2

REVISIONS					
REV	ECO	DESCRIPTION	DATE	BY	APPR
A1	-	RELEASE DRAWING	26JUN18	RIMON	TOMMY
A2	-	UPDATE NOTES	19FEB19	SULLEN	TOMMY
A3	-	UPDATE REAR SEAL WIRE RANGE	05DEC19	SULLEN	TOMMY



KEY-A CONFIGURATION	
COLOR	PART NUMBER
GREY	ATV06-18SA
REF: DTV06-18SA	

KEY-B CONFIGURATION	
COLOR	PART NUMBER
BLACK	ATV06-18SB
REF: DTV06-18SB	

KEY-C CONFIGURATION	
COLOR	PART NUMBER
GREEN	ATV06-18SC
REF: DTV06-18SC	

KEY-D CONFIGURATION	
COLOR	PART NUMBER
BROWN	ATV06-18SD
REF: DTV06-18SD	

SEE CONFIGURATION CHART		PART NUMBER		DESCRIPTION		ITEM
MATERIALS LIST						
QUANTITY	UNLESS OTHERWISE SPECIFIED 1) All dimensions are in metric(mm). 2) Tolerances are as follows: 1 PL DEC ±0.30 Fractions ±1/64 2 PL DEC ±0.15 Angles ±1° 3) Note reference =	SIGNATURES	DATE	 Sine Systems - www.amphenol-sine.com 44724 Morley Drive Clinton Township, MI 48036 PLUG, 18 PIN, ATV SERIES STANDARD DIAMETER WIRE SEAL		
		DRAWN: SULLEN,ZHANG	05DEC19			
		CHECKED: ORION,LI	05DEC19			
		APPROVAL: TOMMY,XIE	05DEC19			
MATERIAL SPECIFICATIONS:		CUSTOMER:		THIS DRAWING IS SUPPLIED FOR INFORMATION ONLY. DESIGN FEATURES, SPECIFICATIONS AND PERFORMANCE DATA SHOWN HEREON ARE THE PROPERTY OF THE AMPHENOL CORPORATION. NO RIGHTS OF REPRODUCTION ARE IMPLIED. ALL DIMENSIONS ARE SUBJECT TO NORMAL MANUFACTURING VARIATIONS.		
PROCESS SPECIFICATIONS:				SIZE	TYPE	DWG NO:
NEXT ASSY:				B	C-	ATV06-18SX
				SCALE	NONE	SHEET 2 OF 2
						REVISION A3

TITLE: PLUG, 18 PIN, ATV SERIES, STANDARD DIAMETER WIRE SEAL
 DWG NO: ATV06-18SX
 REV: A3
 SH: 2
 OF: 2