

ATUM-24/6-0-SP ✓ ACTIVE

RAYCHEM | RAYCHEM ATUM

TE Internal #: NB10114001

Black, 4:1, Dual Wall Tubing, Shrinks To .236 in [6 mm], Irradiated Modified Polyolefin, .945 in [24 mm] Inner Diameter, Flame-Retardant, RAYCHEM ATUM

[View on TE.com >](#)



Heat Shrink Tubing > ATUM 4:1 Heat Shrink Tubing



Primary Product Color: **Black**

Wall Type: **Dual Wall**

Expanded Inside Diameter (Min): **24 mm [.945 in]**

Recovered Inside Diameter (Max): **6 mm [.236 in]**

Shrink Ratio: **4:1**

[All ATUM 4:1 Heat Shrink Tubing \(85\)](#)

Features

Product Type Features

Wall Type	Dual Wall
-----------	-----------

Electrical Characteristics

Operating Voltage (Max)	.6 kV
-------------------------	-------

Body Features

Fluid Type	Aviation Fuel, Chemicals/Solvents, De-Icing Fluid, Diesel Fuel, Hydraulic Fluid, Lubricating Oil
Primary Product Color	Black
Shrink Ratio	4:1
Primary Product Material	Irradiated Modified Polyolefin
Flexibility	Semi-Flexible

Dimensions

Recovered Wall Thickness (Tolerance)	.55 mm[.022 in]
--------------------------------------	-----------------



Recovered Wall Thickness (Nominal)	2.25 mm[.089 in]
Expanded Inside Diameter (Min)	24 mm[.945 in]
Recovered Inside Diameter (Max)	6 mm[.236 in]
Tubing Size Range	6 – 24 mm[.236 – .945 in]

Usage Conditions

Shrink Temperature (Min)	80 °C
Tubing Flammability Type	Flame-Retardant
Operating Temperature Range	-55 – 110 °C
Recovery Temperature	110 °C

Operation/Application

Mechanical Resistance	Fluids, Mechanical Damage, Strain Relief
-----------------------	--

Product Availability

Applicable Region	Global
-------------------	--------

Packaging Features

Packaging Method	Reel
------------------	------

Other

Meets Low Outgassing Requirements	No
Product Source	Czech Republic

Product Compliance

[For compliance documentation, visit the product page on TE.com>](#)

EU RoHS Directive 2011/65/EU	Compliant
EU ELV Directive 2000/53/EC	Compliant
China RoHS 2 Directive MIIT Order No 32, 2016	No Restricted Materials Above Threshold
EU REACH Regulation (EC) No. 1907/2006	Current ECHA Candidate List: JUNE 2024 (241) Candidate List Declared Against: JUNE 2024 (241) SVHC > Threshold: DBMC (1.16% in Component Part) Article Safe Usage Statements: Wash thoroughly after handling. Do not handle until all safety precautions have been read and understood. Recycle if possible and dispose of the article by following all applicable governmental regulations relevant to your geographic location.
Halogen Content	Not Low Halogen - contains Br or Cl > 900 ppm.
Solder Process Capability	Not applicable for solder process capability

Product Compliance Disclaimer

This information is provided based on reasonable inquiry of our suppliers and represents our current actual knowledge based on the information they provided. This information is subject to change. The part numbers that TE has identified as EU RoHS compliant have a maximum concentration of 0.1% by weight in homogenous materials for lead, hexavalent chromium, mercury, PBB, PBDE, DBP, BBP, DEHP, DIBP, and 0.01% for cadmium, or qualify for an exemption to these limits as defined in the Annexes of Directive 2011/65/EU (RoHS2). Finished electrical and electronic equipment products will be CE marked as required by Directive 2011/65/EU. Components may not be CE marked. Additionally, the part numbers that TE has identified as EU ELV compliant have a maximum concentration of 0.1% by weight in homogenous materials for lead, hexavalent chromium, and mercury, and 0.01% for cadmium, or qualify for an exemption to these limits as defined in the Annexes of Directive 2000/53/EC (ELV). Regarding the REACH Regulation, the information TE provides on SVHC in articles for this part number is based on the latest European Chemicals Agency (ECHA) 'Guidance on requirements for substances in articles' posted at this URL: <https://echa.europa.eu/guidance-documents/guidance-on-reach>

Compatible Parts



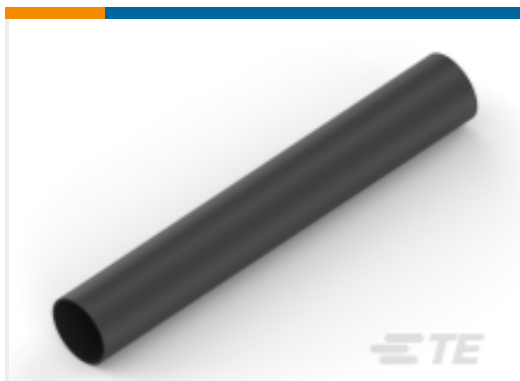
TE Part # EG1114-000
CV1981-ST-230V1600W-EU

Also in the Series | RAYCHEM ATUM



Heat Shrink Tubing(220)

Customers Also Bought



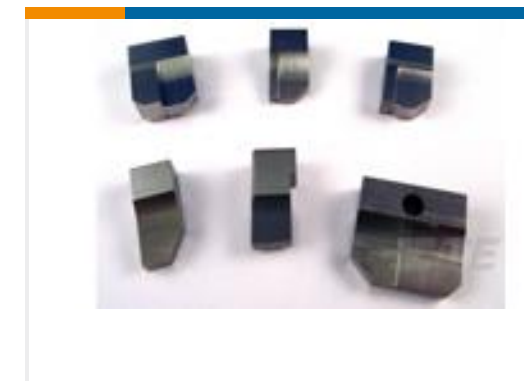
TE Part #NB10076001
ATUM-24/6-0-65MM



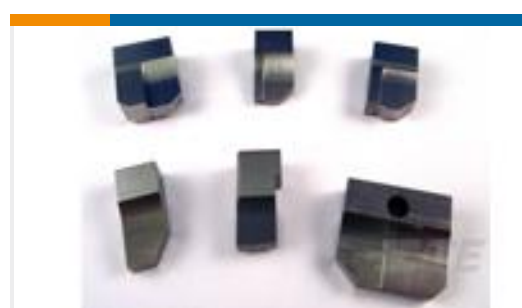
TE Part #CH31656001
RBK-ILS Heat Shrink Tubing



TE Part #EM58926001
RBK-VWS-125-NR1-X-30MM



TE Part #1333323-1
ANVIL, COMBINATION,SPECIAL



TE Part #2-1633129-2
ANVIL, COMBINATION .062



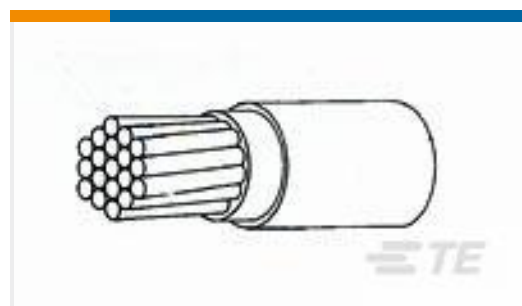
TE Part #2141612-2
RADIAL SEAL 25 X 43, CABLE SEAL,
YW



TE Part #2837157-1
OCEAN_2.0_Applicator-S-110F155O-
RSM



TE Part #7-568176-0
CRIMPER, WIRE (.050" 'F')



TE Part #CD61203001
44A0111-22-2CK0300

Documents

Product Drawings

[ATUM-24/6-0-SP](#)

English

Datasheets & Catalog Pages

[ATUM Tubing](#)

English

Product Specifications

[Application Specification](#)

English