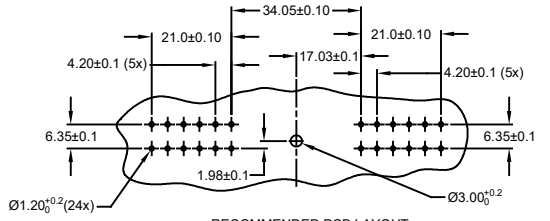
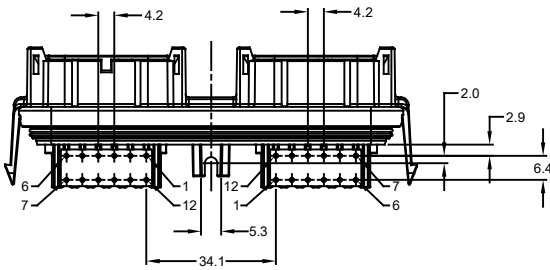
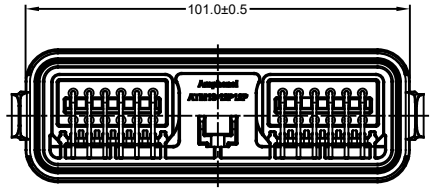
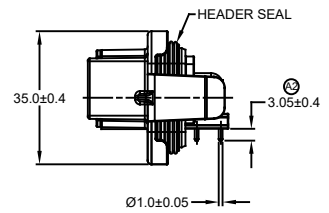
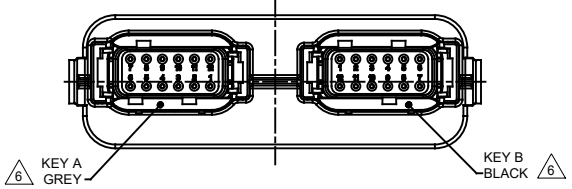
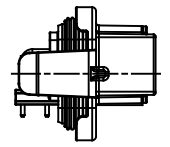
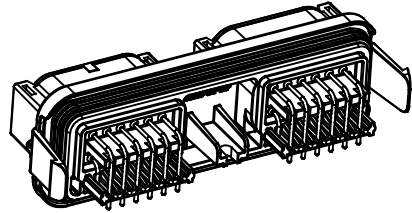
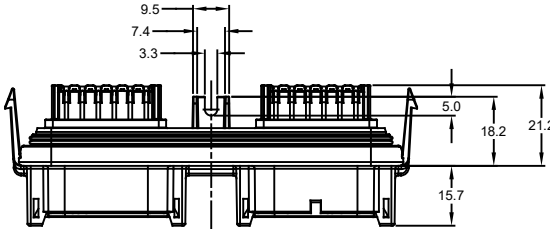


REVISIONS					
REV	ECO	DESCRIPTION	DATE	BY	APPR
A1	-	RELEASE NEW DRAWING	06NOV18	SULLEN	TOMMY
A2	-	UPDATED DRAWING	18FEB19	SULLEN	TOMMY



RECOMMENDED PCB LAYOUT
VIEW FROM COMPONENTS
SIDE OF PCB

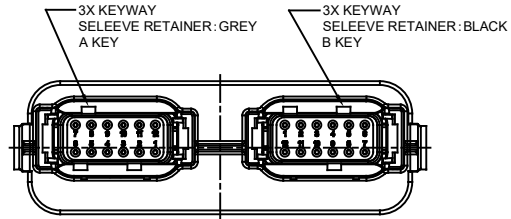
- NOTES: UNLESS OTHERWISE SPECIFIED
- MATERIAL:
HOUSING: THERMOPLASTIC, BLACK
SEAL: SILICONE RUBBER
CONTACT: COPPER ALLOY
 - MODIFICATIONS: RA PCB MOUNT
 - SPECIFICATIONS:
3.1 CURRENT RATING: 7.5 AMPS
3.2 OPERATING TEMPERATURE: -55°C TO +125°C
3.3 DIELECTRIC WITHSTANDING VOLTAGE: LESS THAN 2 MILLIAMPS CURRENT LEAKAGE @ 1500 VOLTS AC
3.4 INSULATION RESISTANCE: 1000 MEGOHMS MIN @ 25°C
3.5 MOISTURE RESISTANCE: IP69K (MATED CONDITION)
3.6 MATING CYCLE DURABILITY: 100 CYCLES
3.7 RoHS COMPLIANT
 - MATING PART: ATM06-12SX-*(X = A,B,C,D KEYS ; * = ALL MODIFICATIONS)
 - THIS RECEPTACLE IS USED WITH AIPXE-325X4* ENCLOSURE (* = ALL MODIFICATIONS)

SEE SHEET 2 AND 3 FOR OTHER KEY ARRANGEMENTS AND COLORS
7. ALL DIMENSIONS ARE FOR REFERENCE USE ONLY

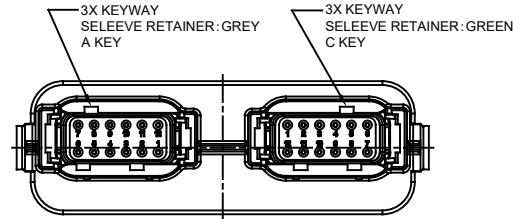
ATM13-12PX-12PX-BMXX		PART NUMBER		DESCRIPTION		ITEM
QUANTITY	MATERIALS LIST					
UNLESS OTHERWISE SPECIFIED		SIGNATURES		DATE		<p>Sine Systems - www.amphenol-sine.com 44724 Morley Drive Clinton Township, MI 48036</p> <p>ARMOR IPX RECEPTACLE ATM HEADER, 2 x 12 POSITIONS, SIZE 20 CONTACT</p>
1) All dimensions are in metric (mm). 2) Tolerances are as follows: 1 PL DEC ±0.30 Fractions ±1/64 2 PL DEC ±0.15 Angles ±1° 3 PL DEC ±0.08		DRAWN:	SULLEN ZHANG	18FEB19		
3) Note reference = \triangle		CHECKED:	ORION LI	18FEB19		
MATERIAL SPECIFICATIONS:		ENGINEER:				
PROCESS SPECIFICATIONS:		APPROVAL:	TOMMY XIE	18FEB19		
NEXT ASSEMBLY:		CUSTOMER:				
THIS DRAWING IS SUPPLIED FOR INFORMATION ONLY. DESIGN FEATURES, SPECIFICATIONS AND PERFORMANCE DATA SHOWN HEREON ARE THE PROPERTY OF THE AMPHENOL CORPORATION. NO RIGHTS OF REPRODUCTION ARE IMPLIED. ALL DIMENSIONS ARE SUBJECT TO NORMAL MANUFACTURING VARIATIONS.		SIZE	TYPE	DWG NO:	REVISION	
		B	C-	ATM13-12PX-12PX-BMXX	A2	
		SCALE:	NONE		SHEET	1 OF 3

TITLE: ARMOR IPX RECEPTACLE ATM HDR, 2x 12 POSITIONS, SIZE 20 CONTACT | DWG NO: ATM13-12PX-12PX-BMXX | REV: A2 | SH: 1 | OF: 3

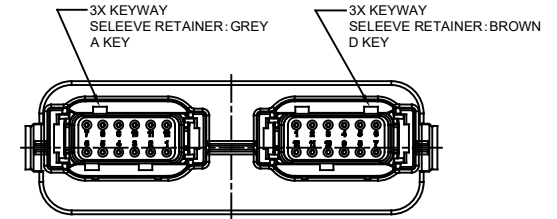
REVISIONS					
REV	ECO	DESCRIPTION	DATE	BY	APPR
A1	-	RELEASE NEW DRAWING	06NOV18	SULLEN	TOMMY
A2	-	UPDATED DRAWING	18FEB19	SULLEN	TOMMY



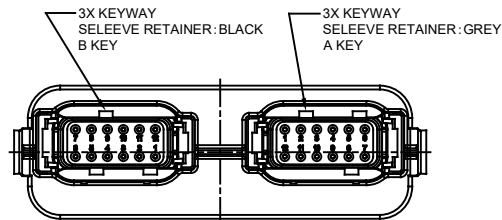
ATM13-12PA-12PB-BMXX
KEY AB



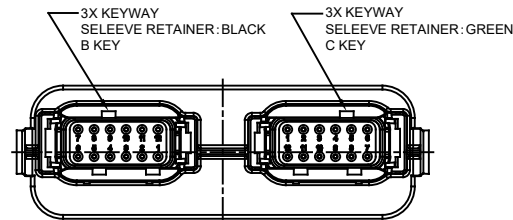
ATM13-12PA-12PC-BMXX
KEY AC



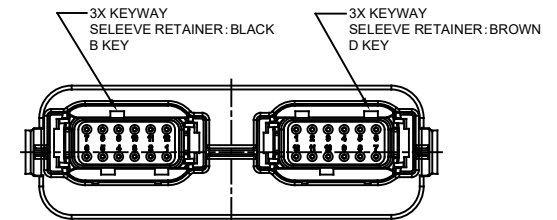
ATM13-12PA-12PD-BMXX
KEY AD



ATM13-12PB-12PA-BMXX
KEY BA



ATM13-12PB-12PC-BMXX
KEY BC



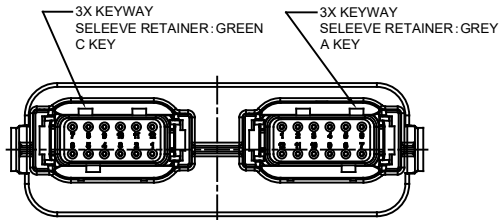
ATM13-12PB-12PD-BMXX
KEY BD

ATM13-12PX-12PX-BMXX VARIANTS		
CONTACT PLATING	POTTING OR NOT IN RESERVOIR	PART NUMBER
GOLD	NO POTTING	ATM13-12PX-12PX-BM01
TIN	NO POTTING	ATM13-12PX-12PX-BM03

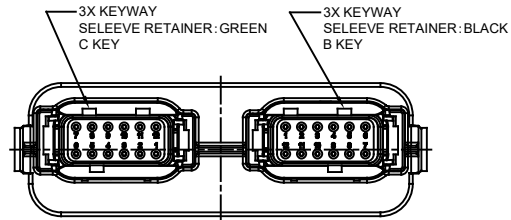
ATM13-12PX-12PX-BMXX			
PART NUMBER		DESCRIPTION	
QUANTITY		ITEM	
MATERIALS LIST			
UNLESS OTHERWISE SPECIFIED: 1) All dimensions are in metric(mm). 2) Tolerances are as follows: 1 PL DEC ±0.30 2 PL DEC ±0.15 3 PL DEC ±0.08 3) Note reference =		SIGNATURES DATE DRAWN: SULLENZHANG 18FEB19 CHECKED: ORIONLI 18FEB19 ENGINEER: APPROVAL: TOMMY XIE 18FEB19	
MATERIAL SPECIFICATIONS:		CUSTOMER:	
PROCESS SPECIFICATIONS:		THIS DRAWING IS SUPPLIED FOR INFORMATION ONLY. DESIGN FEATURES, SPECIFICATIONS AND PERFORMANCE DATA SHOWN HEREON ARE THE PROPERTY OF THE AMPHENOL CORPORATION. NO RIGHTS OF REPRODUCTION ARE IMPLIED. ALL DIMENSIONS ARE SUBJECT TO NORMAL MANUFACTURING VARIATIONS.	
NEXT ASSY:		SCALE: NONE	
		SINE SYSTEMS - www.amphenol-sine.com 44724 Morley Drive Clinton Township, MI 48036	
		ARMOR IPX RECEPTACLE ATM HEADER, 2 x 12 POSITIONS, SIZE 20 CONTACT	
		SIZE: B C-	TYPE: ATM13-12PX-12PX-BMXX
		DWG NO: A2	REVISION: A2
		SHEET 2 OF 3	

TITLE: ARMOR IPX RECEPTACLE ATM HDR, 2x 12 POSITIONS, SIZE 20 CONTACT
 DWG NO: ATM13-12PX-12PX-BMXX
 REV: A2
 SH: 2
 OF: 3

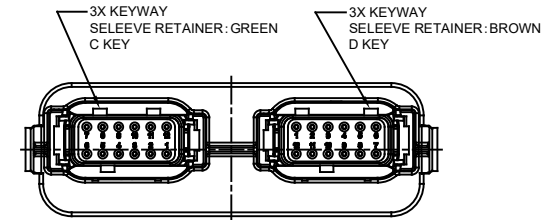
REVISIONS					
REV	ECO	DESCRIPTION	DATE	BY	APPR
A1	-	RELEASE NEW DRAWING	06NOV18	SULLEN	TOMMY
A2	-	UPDATED DRAWING	18FEB19	SULLEN	TOMMY



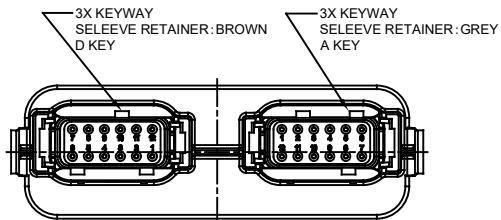
ATM13-12PC-12PA-BMXX
KEY CA



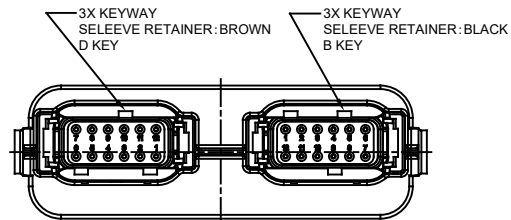
ATM13-12PC-12PB-BMXX
KEY CB



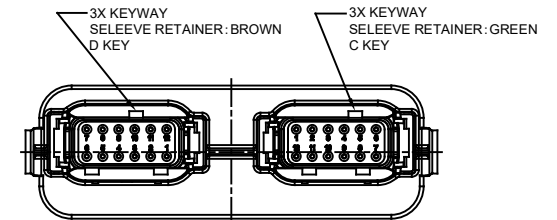
ATM13-12PC-12PD-BMXX
KEY CD



ATM13-12PD-12PA-BMXX
KEY DA



ATM13-12PD-12PB-BMXX
KEY DB



ATM13-12PD-12PC-BMXX
KEY DC

ATM13-12PX-12PX-BMXX VARIANTS		
CONTACT PLATING	POTTING OR NOT IN RESERVOIR	PART NUMBER
GOLD	NO POTTING	ATM13-12PX-12PX-BM01
TIN	NO POTTING	ATM13-12PX-12PX-BM03

ATM13-12PX-12PX-BMXX		DESCRIPTION		ITEM
QUANTITY	PART NUMBER	MATERIALS LIST		
UNLESS OTHERWISE SPECIFIED		SIGNATURES		DATE
1) All dimensions are in metric (mm).		DRAWN: SULLENZHANG		18FEB19
2) Tolerances are as follows:		CHECKED: ORIONLI		18FEB19
1 PL DEC ±0.30		ENGINEER:		
2 PL DEC ±0.15		APPROVAL: TOMMY XIE		18FEB19
3 PL DEC ±0.08		CUSTOMER:		
3) Note reference = Δ		THIS DRAWING IS SUPPLIED FOR INFORMATION ONLY. DESIGN FEATURES, SPECIFICATIONS AND PERFORMANCE DATA SHOWN HEREON ARE THE PROPERTY OF THE AMPHENOL CORPORATION. NO RIGHTS OF REPRODUCTION ARE IMPLIED. ALL DIMENSIONS ARE SUBJECT TO NORMAL MANUFACTURING VARIATIONS.		
MATERIAL SPECIFICATIONS:		CUSTOMER:		
PROCESS SPECIFICATIONS:		SCALE: NONE		
NEXT ASSY:		SIZE: B		TYPE: C-
		DWG NO: ATM13-12PX-12PX-BMXX		REVISION: A2
		SHEET 3 OF 3		

TITLE: ARMOR IPX RECEPTACLE ATM HEADER, 2x 12 POSITIONS, SIZE 20 CONTACT DWG NO.: ATM13-12PX-12PX-BMXX REV: A2 SH: 3 OF: 3