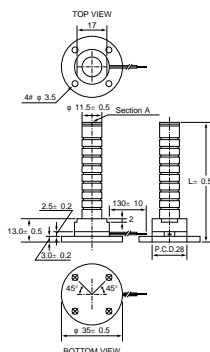


KEMET Part Number: ASL680C801FD0LF
(UPASL68801FD00)

KEMET, ASL, Piezo Actuators, Multilayer



Dimensions	
D	35mm +/-0.5mm
L	92.4mm +/-0.5mm
LL	130mm +/-10mm

Packaging Specifications	
Weight:	65
Packaging:	Tray
Packaging Quantity:	1

General Information	
Style:	Metal Sealed
Description:	Metal Sealed Type Multilayer Piezoelectric Actuators
RoHS:	With Exemptions
REACH:	SVHC (Pb – CAS 7439-92-1)
Notes:	Flange Type, V Groove.

Specifications	
Series:	ASL
Displacement:	77um +/-12um
Voltage DC:	150 VDC
Capacitance:	5.1 uF
Capacitance Tolerance:	20%
Resonant Frequency:	8 kHz
Generated Force:	800 N
Insulation Resistance:	5 MOhms
Temperature Range:	-40/+150°C

Statements of suitability for certain applications are based on our knowledge of typical operating conditions for such applications, but are not intended to constitute - and we specifically disclaim - any warranty concerning suitability for a specific customer application or use. This Information is intended for use only by customers who have the requisite experience and capability to determine the correct products for their application. Any technical advice inferred from this Information or otherwise provided by us with reference to the use of our products is given gratis, and we assume no obligation or liability for the advice given or results obtained.