



ACCELERATE®

(0.635 mm) .025"

ARF6 SERIES

# RUGGED VERTICAL SLIM SOCKET

ARF6-16-L-D-A-K-TR



ARF6-08-L-D-A-K-TR



## SPECIFICATIONS

For complete specifications see [www.samtec.com?ARF6](http://www.samtec.com?ARF6)

**Insulator Material:**

LCP, Black

**Contact Material:**

Copper Alloy

**Shield Material:**

Phosphor Bronze

**Plating:**

Au or Sn over

50 μm (1.27 μm) Ni

**Operating Temp Range:**

-40 °C to +125 °C

Mates with:

ARC6

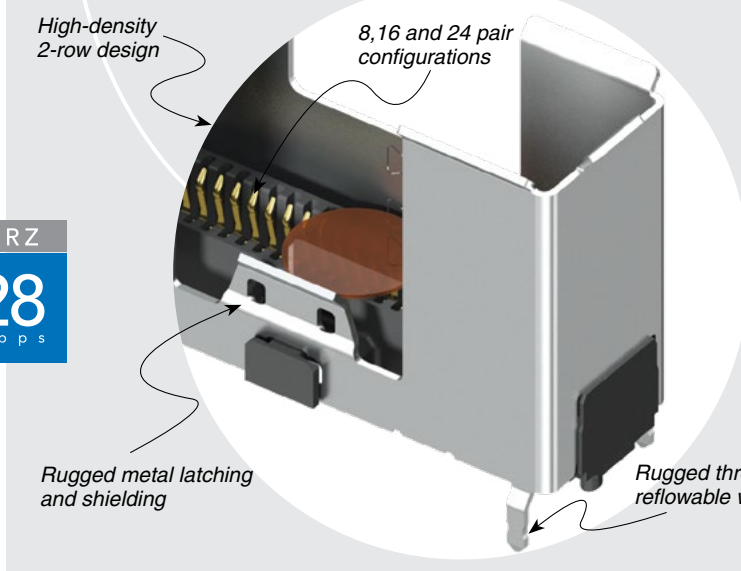
PAM4	NRZ
56 Gbps	28 Gbps

High-density 2-row design

8, 16 and 24 pair configurations

Rugged metal latching and shielding

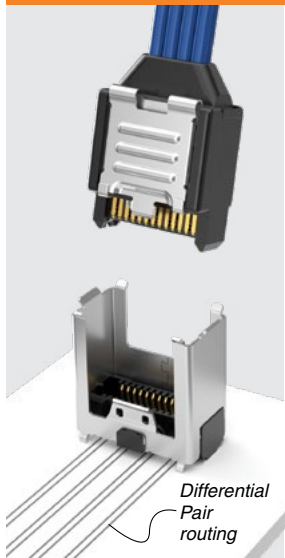
Rugged through-hole reflowable weld tab



## IN DEVELOPMENT

- 24 pairs

## APPLICATION



Differential Pair routing

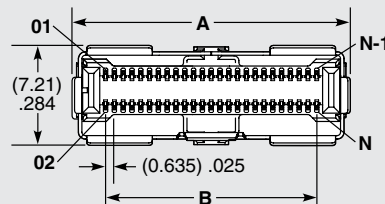
**Notes:**

Tape & Reel packaging and K-Dot are standard.

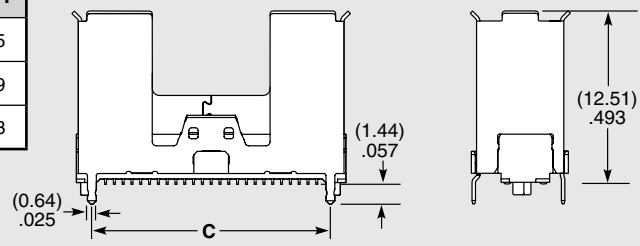
Some sizes, styles and options are non-standard, non-returnable.

ARF6	NO. OF PAIRS	PLATING	ROW	A	K	"X"R
	-08 = 8 Pairs	-L = 10 μm (0.25 μm) Gold on contact area, Matte Tin on tail	-D = Double Row	-A = Alignment Pin	-K = Polyimide film Pick & Place Pad	-TR = Tape & Reel
	-16 = 16 Pairs	-S = 30 μm (0.76 μm) Gold on contact area, Matte Tin on tail				-FR = Full Reel Tape & Reel (must order max. quantity per reel; contact Samtec for quantity breaks)
	-24 = 24 Pairs					

-24 PAIRS PRELIMINARY



NO. OF PAIRS	A	B	C	N	N-1
-08	(12.46) .491	(7.62) .300	(9.59) .378	26	25
-16	(20.08) .791	(15.24) .600	(17.21) .678	50	49
-24	(27.70) 1.091	(22.86) .900	(24.83) .978	74	73



ARF6-16-L-D-A SHOWN

Due to technical progress, all designs, specifications and components are subject to change without notice.

[WWW.SAMTEC.COM](http://WWW.SAMTEC.COM)

All parts within this catalog are built to Samtec's specifications.

Customer specific requirements must be approved by Samtec and identified in a Samtec customer-specific drawing to apply.