

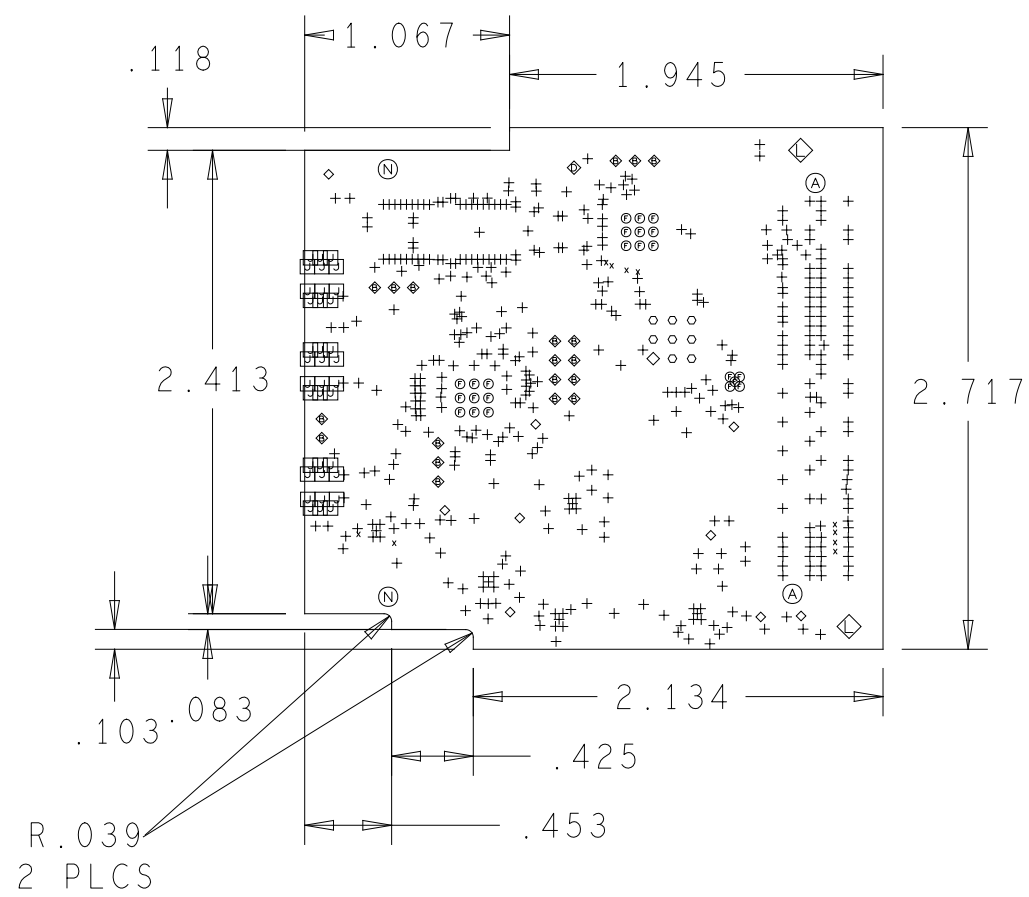
REVISIONS			
REV	DESCRIPTION	DATE	APPROVED
A	INITIAL RELEASE	061821	B. CAMPBELL

NOTES:

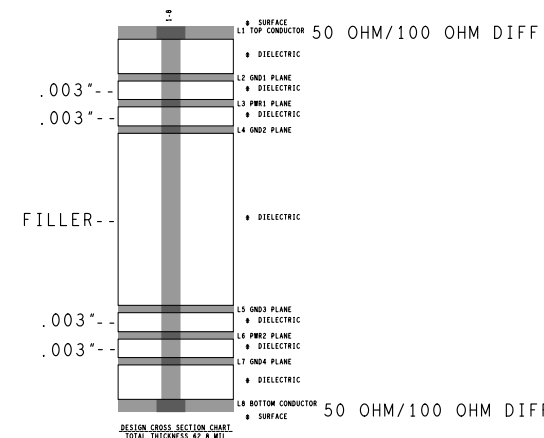
- MATERIALS; MANUFACTURING TO MEET EU ROHS DIRECTIVE, ALL MATERIALS. INCLUDING SOLDERMASK - REFER TO EU ROHS DIRECTIVE 2002/95/ECIALS. ISOLA 370HR/FR408 OR EQUIVALENT, IN ACCORDANCE WITH IPC-L-130 (LATEST REV.). GLASS FABRIC BASE, EPOXY RESIN, FIRE RESISTANT.
- BONDING AGENT; PREIMPREGNATED B STAGE EPOXY GLASS CLOTH IN ACCORDANCE WITH IPC-L-109 (LATEST REV.).
- CLADDING; EXTERNAL LAYERS 1/2 OZ. COPPER, OVERPLATE TO 1 1/2 OZ. INTERNAL SIGNAL LAYERS 1 OZ. COPPER.
- SURFACE FINISH; ENIG (ELECTROLESS NICKEL/IMMERSION GOLD)
- SOLDER MASK; SHALL BE LIQUID PHOTOIMAGABLE (LPI), COLOR BLUE, APPLIED ON BOTH SIDES OVER BARE COPPER AND SHALL MEET IPC-SM-840 (LATEST REV.) CLASS 3.
- SILK SCREEN; SHALL BE PERMANENT NON-CONDUCTIVE EPOXY INK, COLOR WHITE.
- U.L. RATING; 94VO MINIMUM.

FABRICATION:

1. REFER TO IPC-4101B/24/26/83/978/99 SERIES (LATEST REV.), CLASS 2 FOR FABRICATION UNLESS OTHERWISE SPECIFIED.
2. UNDIMENSIONED HOLES TO BE LOCATED WITHIN +/- .005 OF THEIR TRUE POSITION WITH RESPECT TO ARTWORK.
3. PLATED HOLE WALL THICKNESS SHALL NOT BE LESS THAN .001 INCH MINIMUM AVERAGE, WITH NO READING LESS THAN .0008 BY CROSS SECTION.
4. HOLE DIAMETERS APPLY AFTER PLATING.
5. FINISHED CONDUCTOR WIDTHS SHALL NOT BE REDUCED FROM THE NOMINAL, INDICATED ON THE MASTER PATTERN, BY MORE THAN THE CONDUCTOR THICKNESS.
6. MINIMUM DESIGN LINE WIDTH IS .005 INCH.
7. MINIMUM DESIGN SPACING IS .005 INCH.
8. BOARD/PANEL MUST MEET IPC-A-600 (LATEST REV.) CLASS 2 FOR FLATNESS.
9. MFG. TO LEGIBLY ETCH OR STAMP/SCREEN WITH PERMANENT NON-CONDUCTIVE INK ON SECONDARY SIDE IN A CLEAR AREA UNLESS OTHERWISE INDICATED;
  - A. U.L. CODE
  - B. DATE CODE (STAMP)
  - C. FLAMMABILITY RATING
  - D. MFG. LOGO
  - E. SUCCESSFUL ELECTRICAL BOARD TEST.
10. NON-FUNCTIONAL PADS MAY BE REMOVED FROM INNER SIGNAL LAYERS AT MFG. DISCRETION.
11. IF PAD SIZES PROVIDED ARE NOT LARGE ENOUGH TO MAINTAIN ANNULAR RING REQUIREMENT, MFG. MAY TEAR DROP PADS TO MAINTAIN ANNULAR RING AT PAD TO CIRCUIT INTERFACE ONLY AND MUST INSURE ELECTRICAL INTEGRITY.
12. REPAIRS PER IPC-R-700 ARE ALLOWED.
13. MODIFICATIONS TO THE ARTWORK, OTHER THAN THOSE DESCRIBED ON THE FABRICATION DRAWING, ARE NOT ALLOWED WITHOUT WRITTEN AUTHORIZATION.
14. CORE BETWEEN LAYERS 2 AND 3, AND LAYERS 4 AND 5 SHOULD BE NO MORE THAN 3 MILS IN THICKNESS TO HAVE OPTIMUM INNER PLANE CAPACITANCE.
15. SILKSCREEN CROSS HATCHING UNDER LFCSP PACKAGE (DUT1 & U300) IS REQUIRED AND NOT TO BE REMOVED DURING PROCESSING.
16. ALL VIAS OF 13 MILS OR SMALLER SHOULD BE PLUGGED WITH SOLDER (PREFERRED) OR NON-CONDUCTIVE EPOXY OR SOLDERMASK.



FINISHED HOLES IN MILS				
ALL UNITS ARE IN MILS				
FIGURE	SIZE	PLATED	QTY	TOLERANCE/NOTES
*	8.0	PLATED	10	
+	10.0	PLATED	453	
o	10.5	PLATED	23	
□	13.0	PLATED	36	
◇	30.0	PLATED	9	
◆	40.0	PLATED	19	
◇	45.0	PLATED	1	
o	45.0	PLATED	8	
◆	50.0	PLATED	1	
◇	105.0	PLATED	2	
⊙	50.0	NON-PLATED	2	
⊙	105.0	NON-PLATED	2	



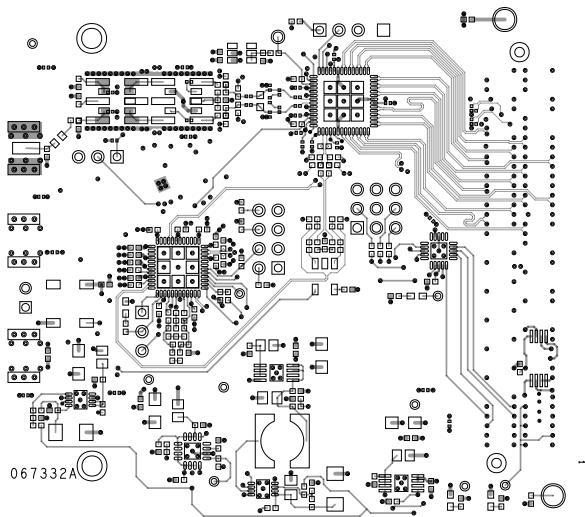
CHARACTERISTIC IMPEDENCE = 50 OHMS +/- 10%  
 ARTWORK LINE WIDTH FOR  
 IMPEDANCE CONTROLLED LINES = 0.009"

CHARACTERISTIC IMPEDENCE = 100 OHMS +/- 10%  
 ARTWORK LINE WIDTH FOR  
 IMPEDANCE CONTROLLED LINES = 0.005" TRACE/0.005" SPACE

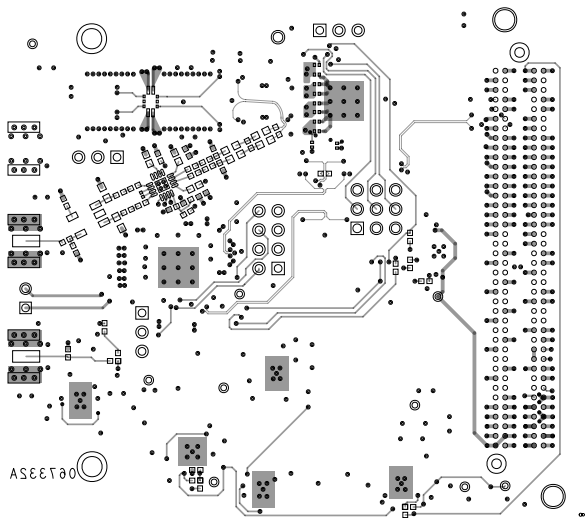
UNLESS OTHERWISE SPECIFIED DIMENSIONS ARE IN INCHES TOLERANCES DECIMALS FRACTIONS ANGLES .XX +/- .010 +/- 1/32 ** 2 .XXX +/- .005	APPROVAL DATE B. CAMPBELL 061821		ANALOG DEVICES ASC DIVISION 804 WOBURN STREET WILMINGTON, MA 01887		
	MATERIAL DRAWN BY B. CAMPBELL 061821 DESIGNED B. CAMPBELL 061821 CHECKED		TITLE AD9434-FMC-5000EB EVAL BOARD Z		
FINISH APPROVED MFG ENGINEER U. JAYAMOHAN 061821	SIZE C	FSCM NO	DRAWING NUMBER 09-067332	REV A	
DO NOT SCALE DWG	SCALE 1X1	SHEET 1 OF 1			



L1 PRIMARY  
08-067332-01  
REV A



L8 SECONDARY  
08-067332-02  
REV A

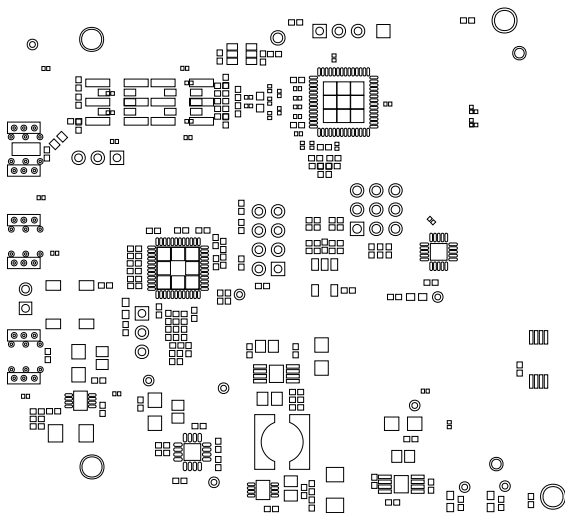




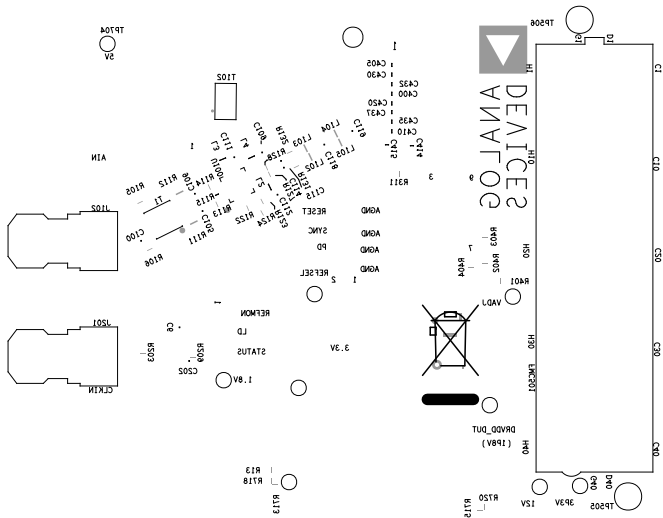
# SOLDERMASK PRIMARY

08-067332-04

REV A



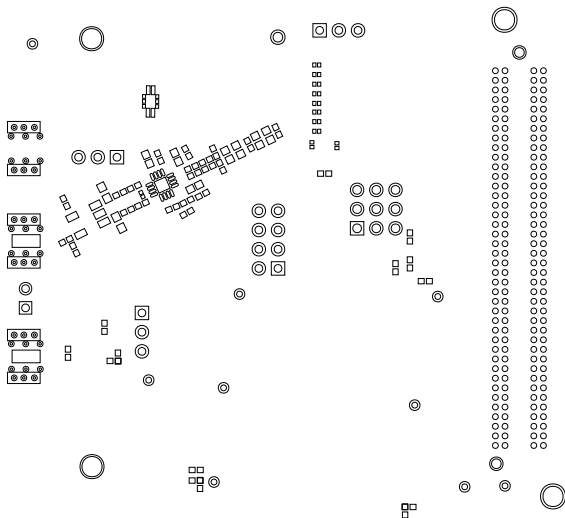
SILKSCREEN SECONDARY  
 08-067332-05  
 REV A



# SOLDERMASK SECONDARY

08-067332-06

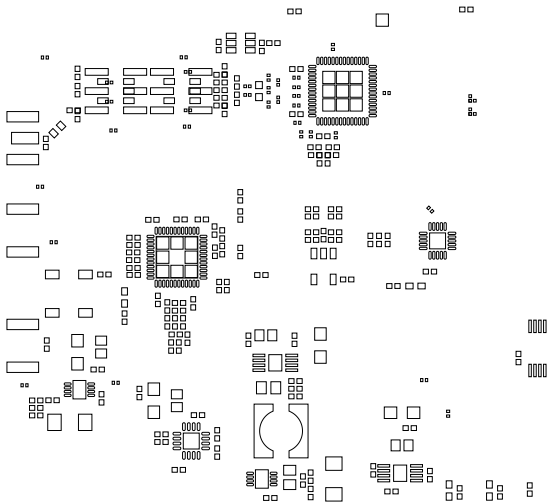
REV A



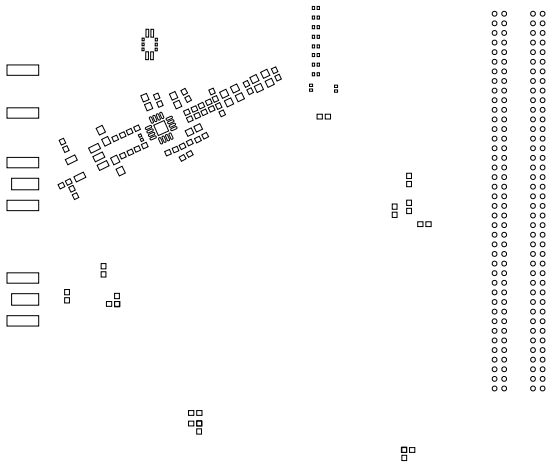
PASTEMASK PRIMARY

08-067332-13

REV A

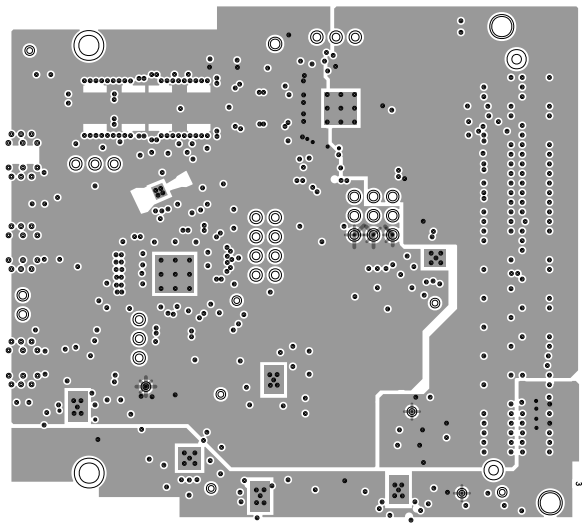


PASTEMASK SECONDARY  
08-067332-14  
REV A

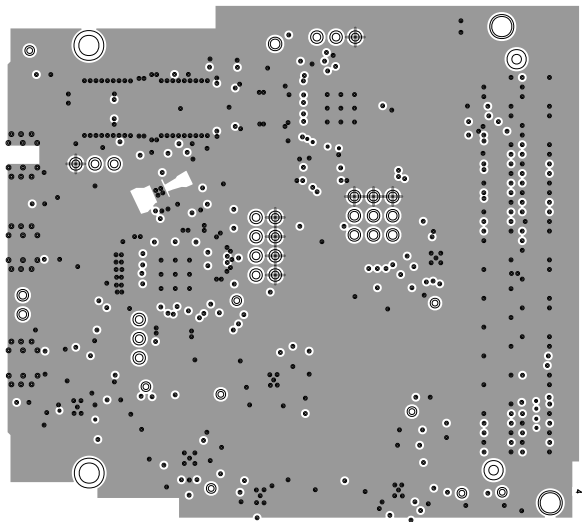




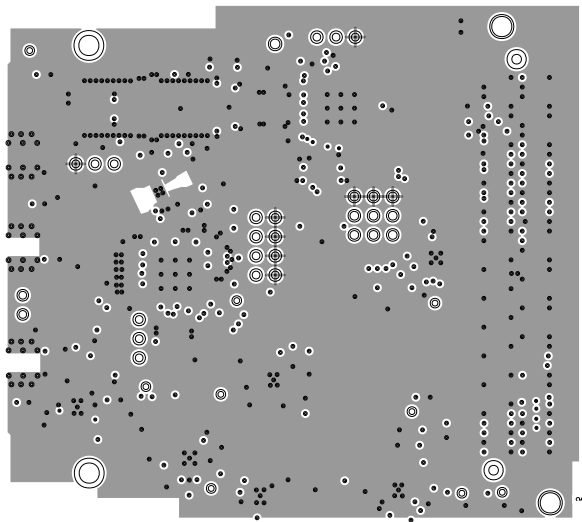
PWR1  
08-067332-08  
REV A



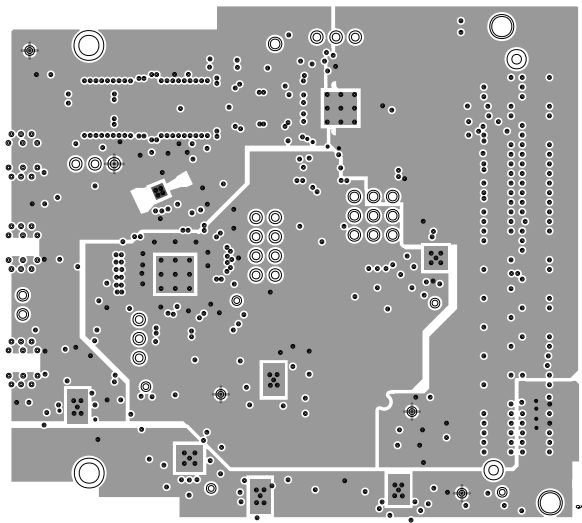
GND2  
08-067332-09  
REV A



GND3  
08-067332-10  
REV A



PWR2  
08-067332-11  
REV A



GND4  
08-067332-12  
REV A

