

San Ace 80 W

Splash proof Fan

Splash proof Fan 80mm

Features

Splash proof and dust resistant

- Protection class IP55* water and dust resistant performance. Maintains safe operation even in harsh environments.

Large air flow and high static pressure

- Maximum air flow : 3.7 m³/min
- Maximum static pressure : 440 Pa

Energy-saving and low noise

- Power consumption : 36 W
- Sound pressure level : 63 dB(A)



※ "IP55" is a protection specification for protection against water sprays and dust. It is based on IEC (International Electrotechnical Commission) and JIS (Japanese Industrial Standards) and specified as follows. Ingress of dust is not entirely prevented, but it must not enter in sufficient quantity to interfere with the satisfactory operation of the equipment; complete protection against contact. Water projected in jets against the enclosure from any direction shall have no harmful effect.

80×80×38mm

Specifications

Model No.	Rated Voltage [V]	Operating Voltage Range [V]	PWM Duty Cycle [%] <small>Note2</small>	Rated Current [A]	Rated Input [W]	Rated Speed [min ⁻¹]	Air Flow		Static Pressure		SPL [dB(A)]	Operating Temperature [°C]	Life Expectancy [h] <small>Note3</small>
							[m ³ /min]	[CFM]	[Pa]	[inchH ₂ O]			
9WV0848P1H001(0011)	48	40.8 to 52.8	100	0.75	36	9,700	3.7	131	440	1.77	63	-10 to +70	40,000/60°C (70,000/40°C)
			0	0.15	7.2	4,500	1.72	60.8	94.7	0.38	43		

Note1 : The numbers in () represent ribless models.
 Note2 : PWM Frequency : 25kHz
 Note3: Expected life at 40 degreeC ambient is just reference value.

Common Specifications

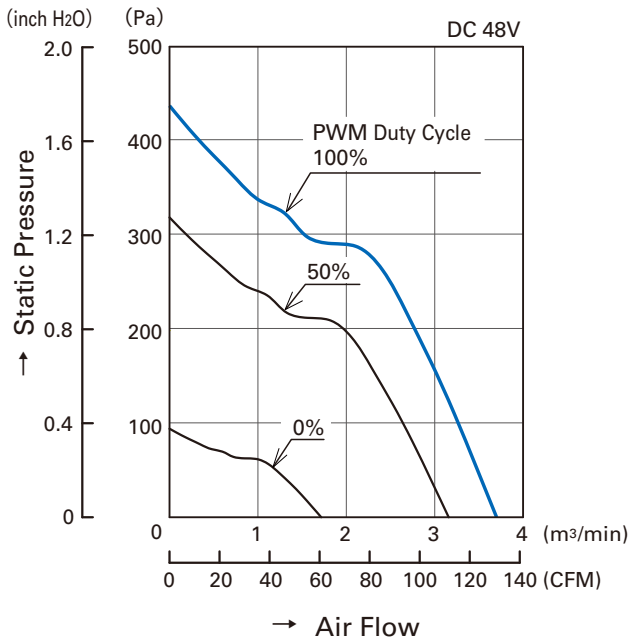
- Material Frame: Plastics (Flammability: UL94V-0) , Impeller: Plastics (Flammability: UL94V-1)
- Life Expectancy Varies for each model
(L10: Survival rate: 90% at 60°C, rated voltage, and continuously run in a free air state)
- Motor Protection System Current blocking function and reverse polarity protection
- Dielectric Strength 50/60 Hz, 500VAC, 1 minute (between lead conductor and frame)
- Sound Pressure Level (SPL) Expressed as the value at 1m from air inlet side
- Operating Temperature Varies for each model (Non-condensing)
- Storage Temperature -30°C to +70°C (Non-Condensing)
- Lead Wire ⊕red ⊖black Sensor: yellow Control: brown
- Mass Apporox. 235g

80mm

San Ace 80 W

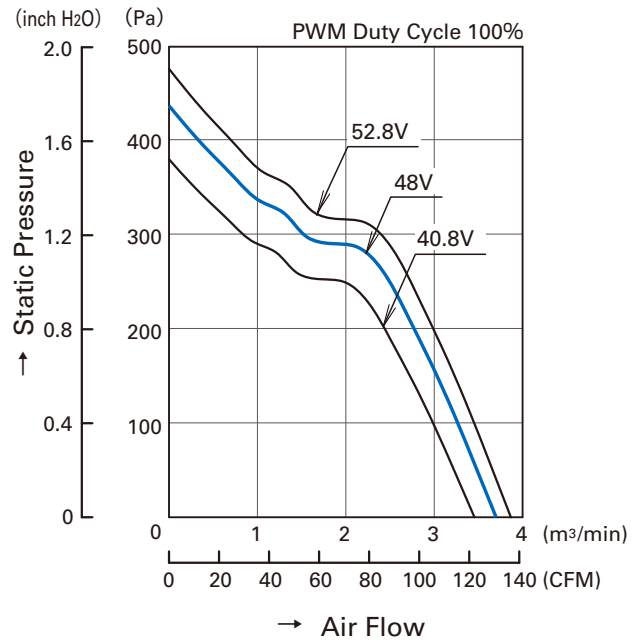
Air Flow and Static Pressure Characteristics

PWM Duty Cycle



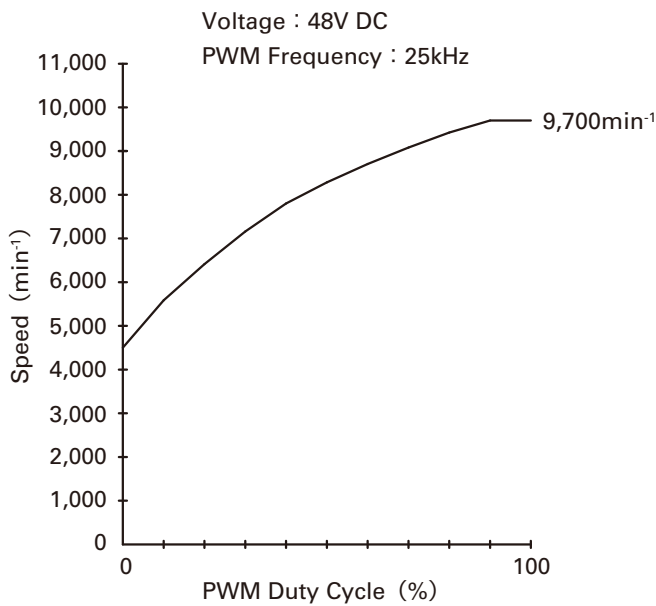
9WV0848P1H001(0011)

Operating Voltage Range



9WV0848P1H001(0011)

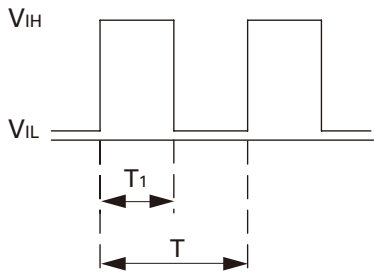
PWM Duty - Speed Characteristics Example



9WV0848P1H001(0011)

PWM Input Signal Example

Input Signal Wave Form



$V_{IH}=4.75V$ to $5.25V$

$V_{IL}=0V$ to $0.4V$

PWM Duty Cycle (%) = $\frac{T_1}{T} \times 100$

PWM Frequency 25 (kHz) = $\frac{1}{T}$

Source Current (I_{source}) : 1mA Max. at control voltage 0V

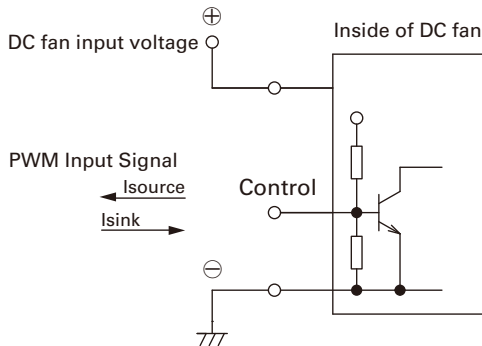
Sink Current (I_{sink}) : 1mA Max. at control voltage 5.25V

Control Terminal Voltage : 5.25V Max.
(When control terminal is opened)

When the control lead wire is open,
speed is same as one at 100% PWM duty cycle.

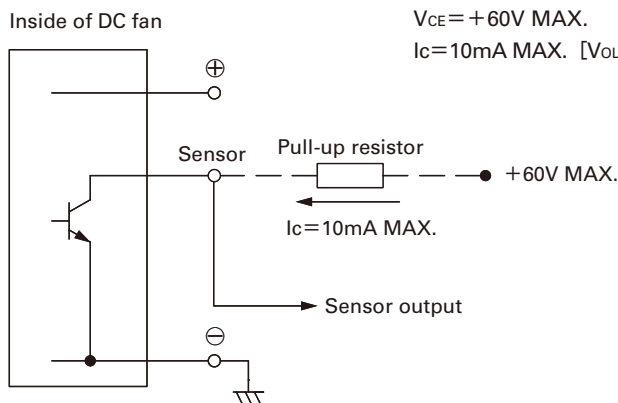
Fan speed could be controlled by PWM input signal
of either TTL input or open collector, drain input.

Connection Schematic



Specifications for Pulse Sensors

Output circuit : Open collector



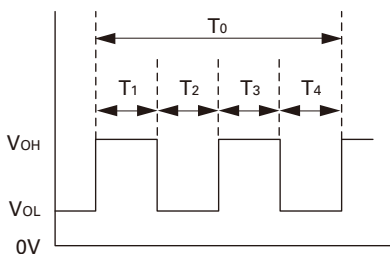
$V_{CE}=+60V$ MAX.

$I_c=10mA$ MAX. [$V_{OL}=V_{CE} (SAT) =0.4V$ MAX.]

Output waveform (Need pull-up resistor)

In case of steady running

(One revolution)

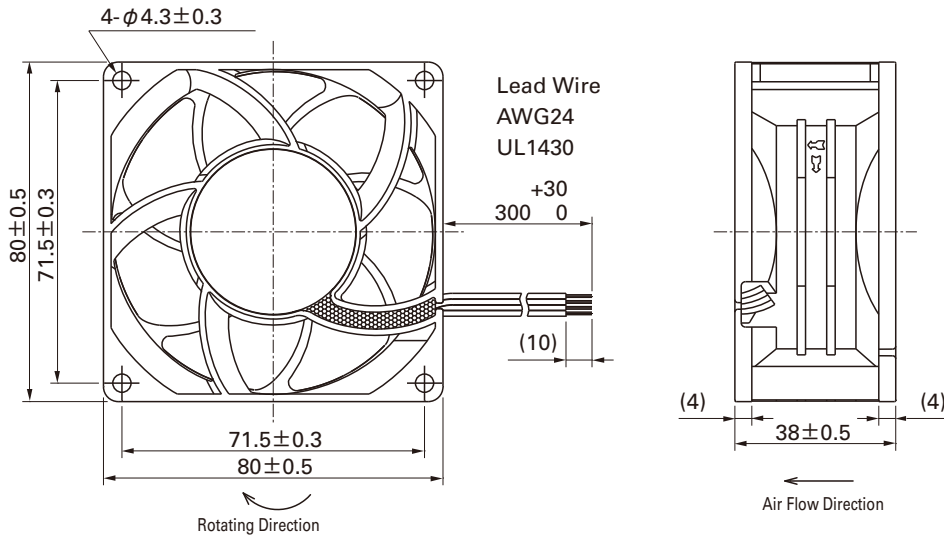


$T_{1-4} \doteq (1/4) T_0$

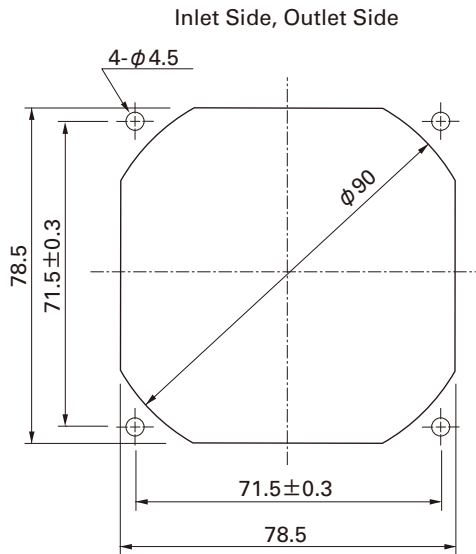
$T_{1-4} \doteq (1/4) T_0 = 60/4N$ (sec)

$N = \text{Fan speed (min}^{-1}\text{)}$

■ **Dimensions (unit : mm)** (with rib)



■ **Reference dimension of mounting holes and vent opening (unit : mm)**



Notice

- The products shown in the catalog are subject to Japanese Export Control Law. Diversion contrary to the law of exporting country is prohibited.
- To protect against electrolytic corrosion that may occur in locations with strong electromagnetic noise, we provide fans that are unaffected by electrolytic corrosion.