

Product data sheet

Subminiature connectors



Product description **Snap-In IP67 Female panel mount connector, Contacts: 8, unshielded, THT, IP67**

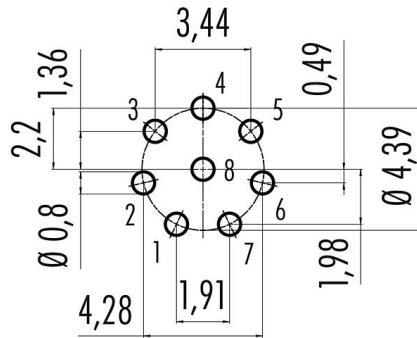
Area **Snap-In IP67 series 620**

Part no. **99 9228 090 08**

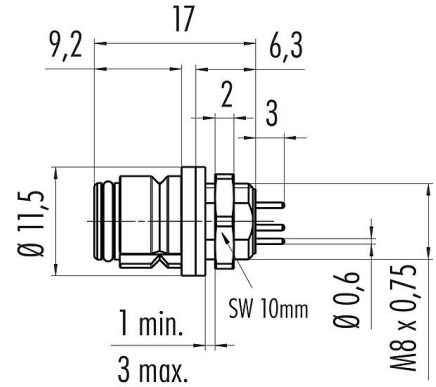
Illustration



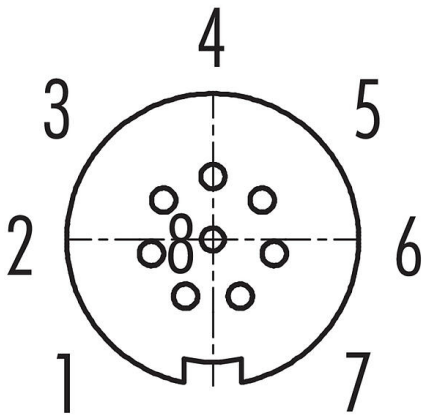
Conductor layout



Scale drawing



Contact arrangement (Plug-in side)



You can find the component part drawing and assembly instructions on the next page.

Technical data

General features

Part no.	99 9228 090 08
Connector design	Female panel mount connector
Version	Connector socket straight
Connector locking system	snap-in
Termination	THT
Degree of protection	IP67
Temperature range from/to	-25 °C / 85 °C

Product data sheet

Subminiature connectors



Product description **Snap-In IP67 Female panel mount connector, Contacts: 8, unshielded, THT, IP67**

Area **Snap-In IP67 series 620**
Part no. **99 9228 090 08**

Mechanical operation > 500 Mating cycles
Weight (g) 3.00
Customs tariff number 85369010

Electrical parameters

Rated voltage 63 V
Rated impulse voltage 800 V
Rated current (40 °C) 1.0 A
Insulation resistance $\geq 10^{10} \Omega$
Pollution degree 2
Overvoltage category II
Insulating material group II
EMC compliance unshielded

Material

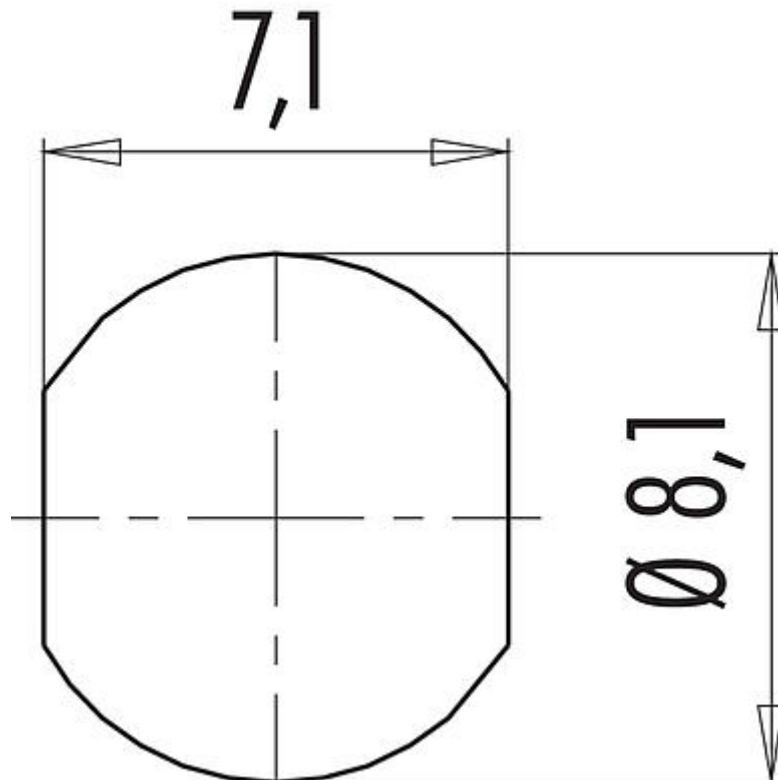
Housing material PA
Contact body material PA (UL94 HB) black
Contact material CuSn (bronze)
Contact plating Au (gold)
REACH SVHC CAS 7439-92-1 (Lead)
SCIP number 898b55ef-d223-4575-bd54-cc4aa0aed152

Classifications

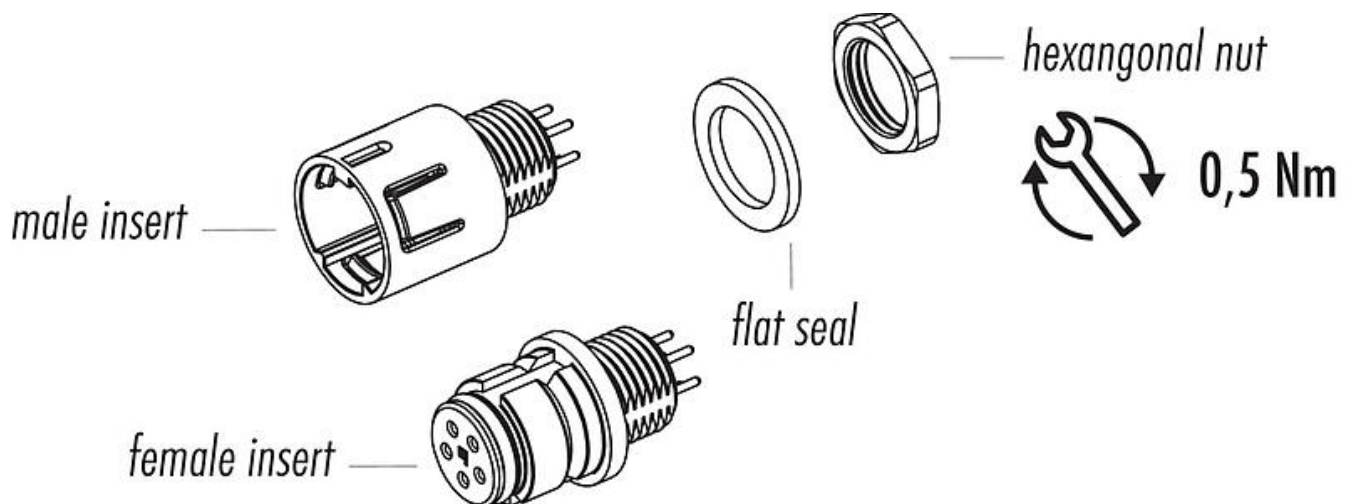
eCl@ss 11.1 27-44-01-02
ETIM 7.0 EC002635

Product description	Snap-In IP67 Female panel mount connector, Contacts: 8, unshielded, THT, IP67
Area	Snap-In IP67 series 620
Part no.	99 9228 090 08

Assembly instructions / Panel cut-out



Component part drawing



Product description	Snap-In IP67 Female panel mount connector, Contacts: 8, unshielded, THT, IP67
Area	Snap-In IP67 series 620
Part no.	99 9228 090 08

General Disclaim Notice

The connector must not be plugged or unplugged under load. Non-observance and improper use can result in personal injury.

The connectors have been developed for applications in plant engineering, control and electrical equipment construction. The user is responsible for checking whether the connectors can also be used in other areas of application.

To protect against unintentional opening of the connector, the thread between the housing and the connector head must be secured with a suitable cyanoacrylate adhesive when used in circuits with voltages dangerous to the touch. This does not apply to connectors used in SELV and PELV circuits according to IEC 61140 (EN 61140, VDE 0140-1).

Connectors which are used in circuits with voltages dangerous to the touch may only be installed and used by, or under the supervision of, persons with electrical engineering training, taking into account the applicable regulations and standards.

Plug connectors with enclosure protection IP67 and IP68 are not suitable for use under water. When used outdoors, the plug connectors must be protected separately against corrosion. For further information on the IP protection classes, please refer to the "Technical Information" download centre.