

PLEASE CHECK WWW.MOLEX.COM FOR LATEST PART INFORMATION

Part Number: [98817-1030](#)
Status: **Active**
Overview: NSCC - New Standard Casing Contact
Description: NSCC single part, Unsealed, 1.50mm, Female Housing, 3.33mm Pitch NSCC, Wire to Wire, 3 Circuits, White

Documents:

[3D Model](#) [Application Specification AS-98821-001 \(PDF\)](#)
[Drawing \(PDF\)](#) [RoHS Certificate of Compliance \(PDF\)](#)
[Product Specification PS-98821-001 \(PDF\)](#)

General

Product Family	Crimp Housings
Series	98817
Application	Power, Wire-to-Wire
Application Tooling Part Link	63813-3800
Overview	NSCC - New Standard Casing Contact
Product Name	NSCC
UPC	822348760916

Physical

Breakaway	No
Circuits (maximum)	3
Circuits Detail	3x1.5mm female terminals
Color - Resin	White
Gender	Female
Glow-Wire Compliant	No
Keying to Mating Part	Yes
Lock to Mating Part	Yes
Material - Resin	Polyester
Net Weight	2.150/g
Number of Rows	1
Packaging Type	Carton
Panel Mount	No
Pitch - Mating Interface	3.33mm
Pitch - Termination Interface	3.33mm
Polarized to Mating Part	Yes
Ports	1
Temperature Range - Operating	-40°C to +100°C

Electrical

Current - Maximum per Contact	10A
-------------------------------	-----

Material Info

Old Part Number	010109329
-----------------	-----------

Reference - Drawing Numbers

Application Specification	AS-98821-001
Product Specification	PS-98821-001
Sales Drawing	SD-98815-003, SD-98817-002

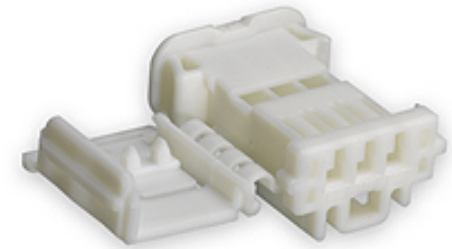


image - Reference only

Series

EU RoHS

ELV and RoHS Compliant

REACH SVHC

Contains SVHC: No Low-Halogen Status Low-Halogen

China RoHS



Need more information on product environmental compliance?

Email productcompliance@molex.com
 For a multiple part number RoHS Certificate of Compliance, [click here](#)

Please visit the [Contact Us](#) section for any non-product compliance questions.

Search Parts in this Series

[98817Series](#)

Mates With

[98822-1030](#) (Male Receptacle Housing)

Use With

Female Terminal NSCC [98897-1109](#) , [98897-1119](#) , [98897-1129](#) or FCI Female Terminal 1.5 Sicma 3

Application Tooling | FAQ

Tooling specifications and manuals are found by selecting the products below. Crimp Height Specifications are then contained in the Application Tooling Specification document.

Global

Description

Product #

Extractor Tool for Unsealed Receptacle Connectors	0638133800
---	----------------------------

This document was generated on 07/02/2013

PLEASE CHECK WWW.MOLEX.COM FOR LATEST PART INFORMATION