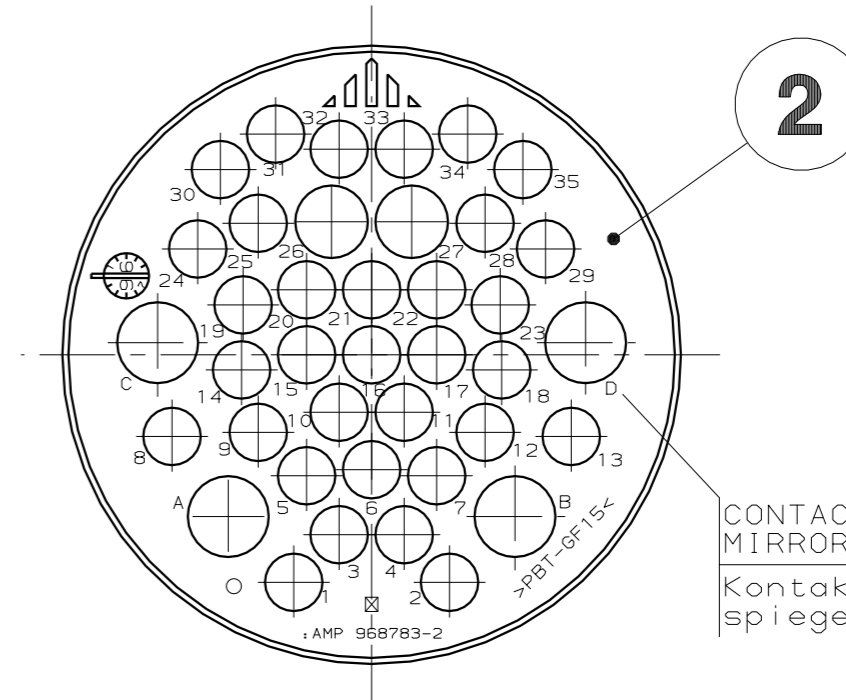
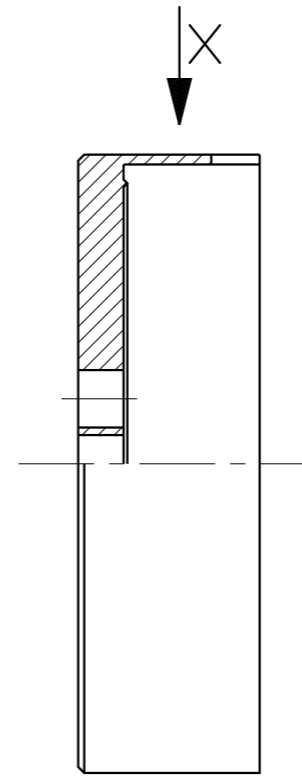
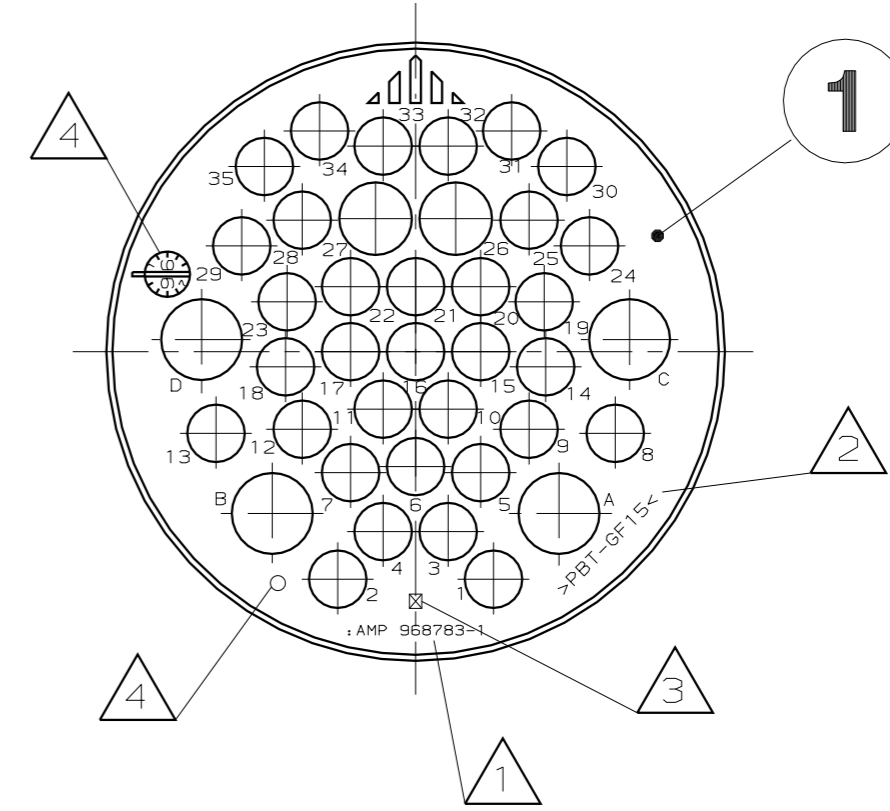
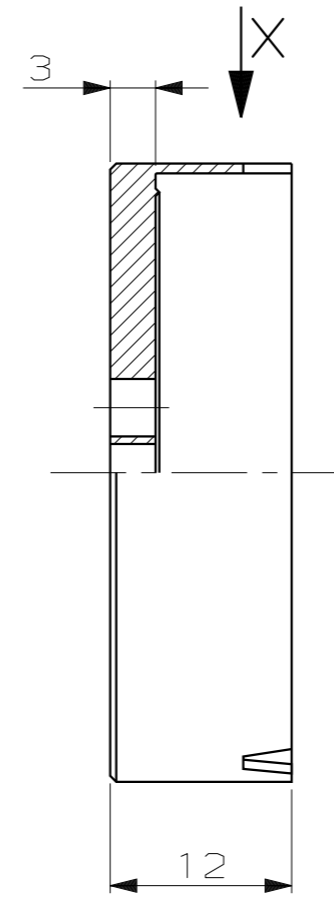
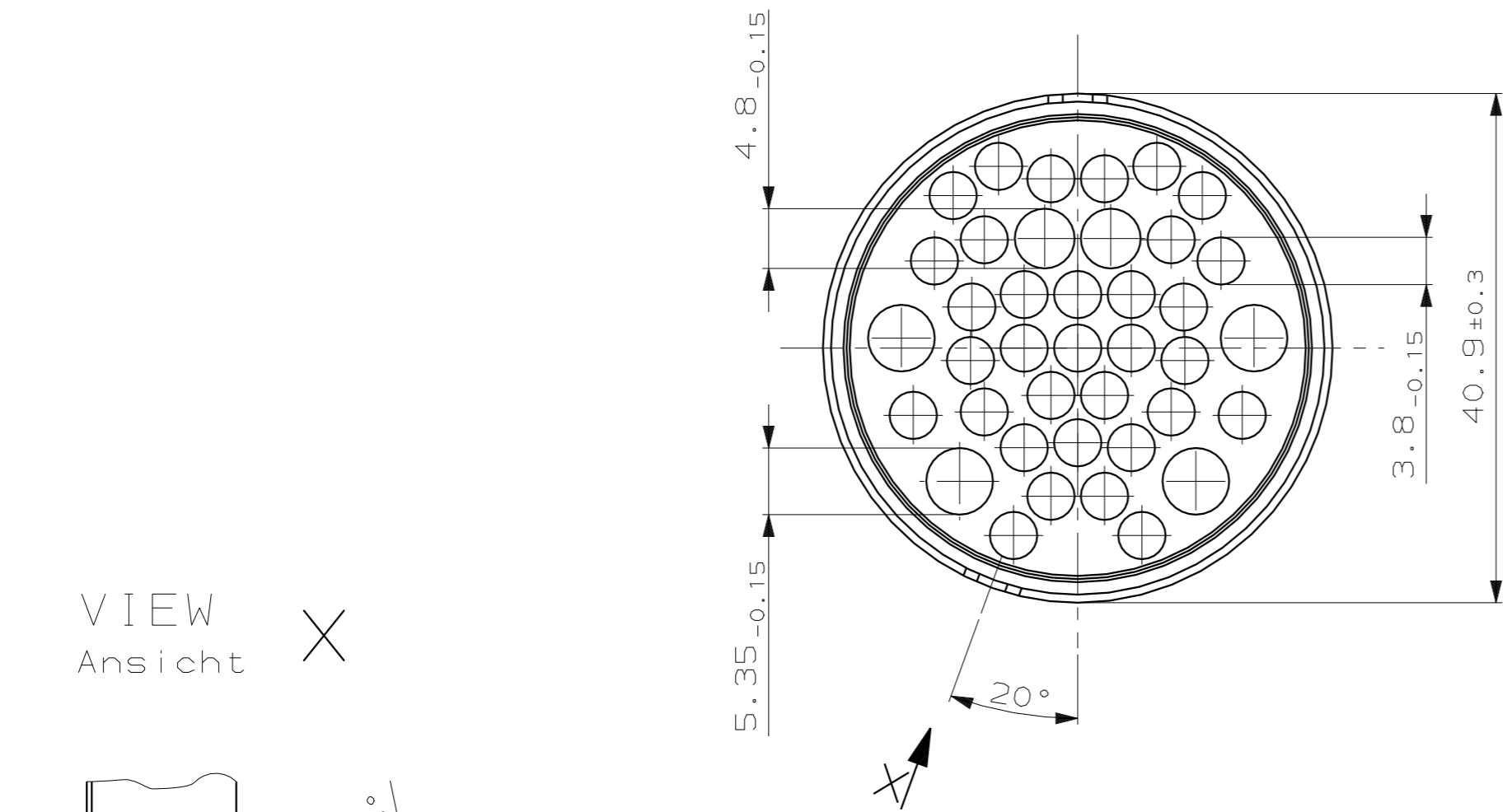
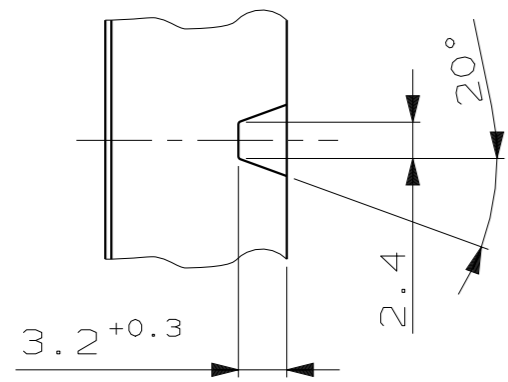


LOC	DIST	REVISIONS					
		P	LTR	DESCRIPTION	DATE	DWN	APVD
AI	-	-	-				
A96-52310		-	-				



VIEW X
Ansicht X



CONTACT CAVITY MARKING
MIRROR-IMAGE TO -1
Kontaktkammer-Nummerierung
spiegelbildlich zu -1

NOTES
Bemerkungen

- 1 AMP LOGO AND AMP NUMBER
AMP-Logo und AMP-Nummer
- 2 MATERIAL MARKING
Werkstoffkennzeichnung
- 3 REVISION OF THE PART
Teileänderungsstand
- 4 PRODUCTION DATE
Produktionsdatum
- 5 CAVITY MARKING
Nestmarkierung

- 6 -1: SUITABLE FOR PIN HOUSING PN 963006
Passend für Stiftgehäuse PN 963006
 - 2: SUITABLE FOR SOCKET HOUSING PN 963008
Passend für Buchsengehäuse PN 963008
- SUITABLE SEALING DISC: PN 968782
Passende Dichtscheibe:

ORDER-NO. BESTELL-NR.	POS.	QTY. STÜCK	DESCRIPTION SINGLE PART BENENNUNG EINZELTEIL	MATERIAL	FINISH	WEIGHT	CUSTOMER DRAWING
968783-2	2	-	PRESSURE PLATE FOR 39POS. SOCKET HSG. Druckplatte für 39pol. Buchsengehäuse	PBT-GF15	BLACK/schwarz	-	
968783-1	1	-	PRESSURE PLATE FOR 39POS. PIN HSG. Druckplatte für 39pol. Stiftgehäuse	PBT-GF15	BLACK/schwarz	-	

DIMENSIONS: mm		TOLERANCES UNLESS OTHERWISE SPECIFIED:		DWN K. Gerlach 27.11.96	AMP AMP Deutschland GmbH D - 63225 Langen
n. DIN 16901 - 140		0 PLC ±		CHK J. Granzow 04.12.96	
1 PLC ±		2 PLC ±		APVD J. Hass 11.12.96	
2 PLC ±		3 PLC ±		PRODUCT SPEC	NAME PRESSURE PLATE FOR 39POS. CPC PIN-/SOCKET-HOUSING
ANGLES		FINISH		APPLICATION SPEC	Druckplatte für 39pol. CPC Stift-/Buchsengehäuse
FINISH		BLACK/schwarz		WEIGHT	SIZE A2
CUSTOMER DRAWING				SCALE 2:1	CAGE CODE 00779
				DRAWING NO C=968783	RESTRICTED TO DAF
				SHEET 1	REV A