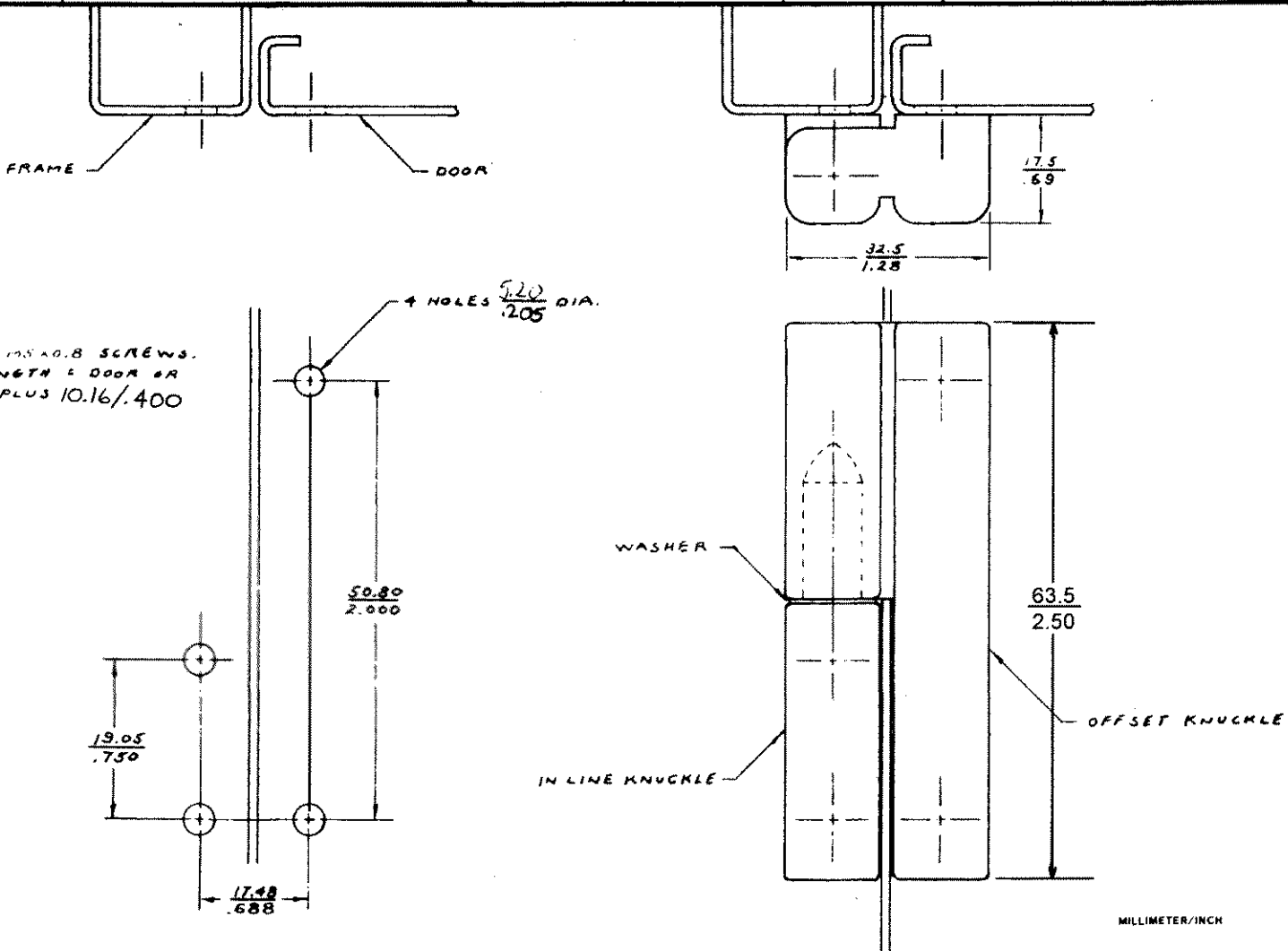




SOUTHCO NS 96 LIFT-OFF HINGE  
OFFSET STYLE, TYPE A

DATE	DRAWN	CHKD	SCALE	DRAWING NUMBER
7 87	RHB		NTS	J-96-50-510-50

REV. LET.	DATE	BY	CHKD	REVISIONS	ITEM	PART N2	MATERIAL	FINISH
A	9-18-87	<del>SS</del>		PRN: 96-19	ASSEMBLY	96-50-510-50	---	---
B	1-8-88	MN		PRN: 96-22 (.205 WAS .201)	OFFSET KNUCKLE	---	ZINC	BLACK POWDER COATED
C	9-16-91	<del>SS</del>		PRN: 96-36B	INLINE KNUCKLE	---	ZINC	BLACK POWDER COATED
D	10-25-91	JAO		PRN: 96-42	WASHER	---	NYLON	BLACK
E	12 JAN 93	JC		PRN: S-1-03				
F	25 MAR 93	<del>SS</del>		PRN: 96-52				



ATTACH HINGE WITH 12.5 X 0.8 SCREWS.  
MAXIMUM SCREW LENGTH = DOOR OR  
FRAME THICKNESS PLUS 10.16 / .400

MILLIMETER/INCH

PROPRIETARY ITEM—EXCEPT FOR USES EXPRESSLY GRANTED IN WRITING, INFORMATION DISCLOSED HEREON IS CONFIDENTIAL AND ALL RIGHTS, PATENT AND OTHERWISE, ARE RESERVED BY SOUTHCO, INC.

DRAWING NUMBER  
J-96-50-510-50