



Part Number : [936011531](#)

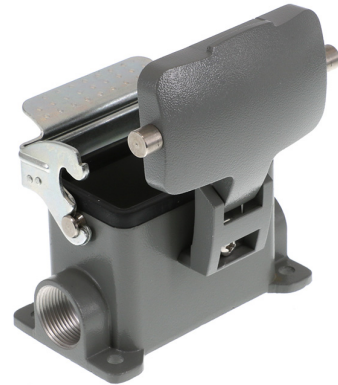
Product Description : GWconnect STD - Standard, Single Lever Surface Mount Housing, Die-cast Aluminum, with 1 Lever, with Cover, with Gasket, Size 10B «57x27», Pg16 Thread, Grey

Series Number : 93601

Status : Active

Product Category : Heavy-Duty Connectors

Engineering Number : 7810.6313.0



Documents & Resources

Drawings

[936011531_sd.pdf](#)

Product Environment Compliance

Compliance

GADSL/IMDS	Not Relevant
China RoHS	
EU ELV	Not Relevant
Low-Halogen Status	Low-Halogen per IEC 61249-2-21
REACH SVHC	Not Contained per D(2023)3788-DC (14 Jun 2023)
EU RoHS	Compliant per EU 2015/863

Multiple Part Product Compliance Statements

- Eu RoHS
- REACH SVHC
- Low-Halogen

Multiple Part Industry Compliance Documents

- IPC 1752A Class C
- IPC 1752A Class D
- Molex Product Compliance Declaration
- IEC-62474

Part Details

General

Status	Active
Category	Heavy-Duty Connectors
Series	93601
Description	GWconnect STD - Standard, Single Lever Surface Mount Housing, Die-cast Aluminum, with 1 Lever, with Cover, with Gasket, Size 10B «57x27», Pg16 Thread, Grey
Component Type	Single Lever SMT Housing
IP Rating	IP66
Product Name	GWconnect
Standard	ANSI/UL 50, ANSI/UL 50 E, CSA C22.2 No.94-1-2, EN 61984
Type	STD
UPC	887191826868

Agency

CSA	256883
UL	E249674

Electrical

Voltage - Maximum	500V
-------------------	------

Physical

Component Size	10B «57X27»
Cover Coating	Polyester Powder
Cover Color	Grey RAL 7037
Housing Coating	Polyester Powder
Housing Color	Grey RAL 7037
Lock to Mating Part	Yes
Material - Cover	Die-cast Aluminum
Material - Gasket	NBR

Material - Housing	Die-cast Aluminum
Material - Lever	Galvanized Steel
Mounting Style	Surface Mount
Net Weight	290.960/g
Number of Levers	1
Packaging Type	Bag
Thread Size	Pg16
Thread Type	(Pg)

Use with Part(s)

Description	Part Number
Use With	Size 10B «57x27» S-D, S-DD, S-E, S-EE, S-EP, S-ES, S-HSB, S-ESHV, S-K, S-M, and S-EHV Inserts