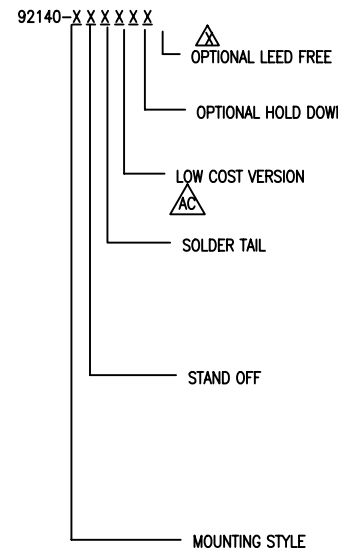
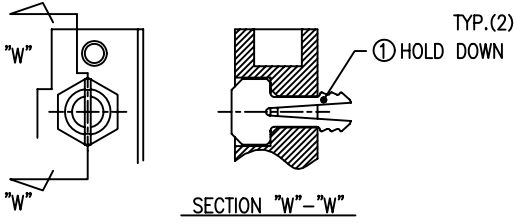


PRODUCT NO.
92140

PRODUCT NO.	STAND OFF	SOLDER TAIL	DIM "P" (mm)	DIM "Q" (mm)	FOR LOWER DECK OR UPPER DECK	HOLD DOWN	LOCATOR FOR SOLDER TAIL ALIGNMENT	SHEET NO.	MOUNTING STYLE TO PCB		
92140-XXXX	0	R/A	2.8	---	---	---	---				
000	0	R/A	2.8	---	LOWER	NONE	NONE	NO.2	TOP MOUNT 92140-XXXX BLACK COLOR		
000M	0	R/A	2.8	---	LOWER	NONE	NONE				
000LF	0	R/A	2.8	---	LOWER	NONE	NONE				
000MLF	0	R/A	2.8	---	LOWER	NONE	NONE				
000H	0	R/A	2.8	---	LOWER	YES	NONE				
000HLF	0	R/A	2.8	---	LOWER	YES	NONE				
001	0	SMT STG.	---	---	LOWER	NONE	NONE				
001LF	0	SMT STG.	---	---	LOWER	NONE	NONE				
001H	0	SMT STG.	---	---	LOWER	YES	NONE				
001HLF	0	SMT STG.	---	---	LOWER	YES	NONE				
002	0	SMT LL	---	---	LOWER	NONE	NONE				
002LF	0	SMT LL	---	---	LOWER	NONE	NONE				
002H	0	SMT LL	---	---	LOWER	YES	NONE				
002HLF	0	SMT LL	---	---	LOWER	YES	NONE				
010	4	R/A	2.8	---	LOWER	NONE	YES	NO.3	BOTTOM MOUNT 92140-5XXX		
010LF	4	R/A	2.8	---	LOWER	NONE	YES				
010H	4	R/A	2.8	---	LOWER	YES	YES				
010HLF	4	R/A	2.8	---	LOWER	YES	YES				
020	5	R/A	2.8	---	LOWER	NONE	YES				
020LF	5	R/A	2.8	---	LOWER	NONE	YES				
020MLF	5	R/A	2.8	---	LOWER	NONE	YES				
021MLF	5	R/A	2.8	---	LOWER	NONE	YES				
020H	5	R/A	2.8	---	LOWER	YES	YES				
020HLF	5	R/A	2.8	---	LOWER	YES	YES				
040	2	R/A	2.5	---	LOWER	NONE	NONE				
040LF	2	R/A	2.5	---	LOWER	NONE	NONE				
040HLF	2	R/A	2.5	---	LOWER	YES	NONE				
050	3	R/A	2.8	---	LOWER	NONE	YES			NO.4	
050LF	3	R/A	2.8	---	LOWER	NONE	YES				
050H	3	R/A	2.8	---	LOWER	YES	YES				
050HLF	3	R/A	2.8	---	LOWER	YES	YES				
005	FOR 0	R/A	2.8	8.6	UPPER	NONE	YES				
005LF	FOR 0	R/A	2.8	8.6	UPPER	NONE	YES				
045	FOR 2	R/A	2.5	10.3	UPPER	NONE	YES				
045LF	FOR 2	R/A	2.5	10.3	UPPER	NONE	YES				
500	0	R/A	2.8	---	LOWER	NONE	NONE	NO.5			
500LF	0	R/A	2.8	---	LOWER	NONE	NONE				
500H	0	R/A	2.8	---	LOWER	YES	NONE				
500HLF	0	R/A	2.8	---	LOWER	YES	NONE				
501	0	SMT STG.	---	---	LOWER	NONE	NONE				
501LF	0	SMT STG.	---	---	LOWER	NONE	NONE				
501H	0	SMT STG.	---	---	LOWER	YES	NONE				
501HLF	0	SMT STG.	---	---	LOWER	YES	NONE				
502	0	SMT LL	---	---	LOWER	NONE	NONE				
502LF	0	SMT LL	---	---	LOWER	NONE	NONE				
502H	0	SMT LL	---	---	LOWER	YES	NONE				
502HLF	0	SMT LL	---	---	LOWER	YES	NONE				
503	0	SMT LL	---	---	LOWER	NONE	NONE				
503LF	0	SMT LL	---	---	LOWER	NONE	NONE				
510	4	R/A	2.8	---	LOWER	NONE	YES	NO.6			
510LF	4	R/A	2.8	---	LOWER	NONE	YES				
510H	4	R/A	2.8	---	LOWER	YES	YES				
510HLF	4	R/A	2.8	---	LOWER	YES	YES				
520	5	R/A	2.8	---	LOWER	NONE	YES				
520LF	5	R/A	2.8	---	LOWER	NONE	YES				
520H	5	R/A	2.8	---	LOWER	YES	YES				
520HLF	5	R/A	2.8	---	LOWER	YES	YES				
530	2	R/A	1.48	---	LOWER	NONE	NONE				
530LF	2	R/A	1.48	---	LOWER	NONE	NONE				
540	2	R/A	2.5	---	LOWER	NONE	NONE				
540LF	2	R/A	2.5	---	LOWER	NONE	NONE				
505	FOR 0	R/A	2.8	8.6	UPPER	NONE	YES				
505LF	FOR 0	R/A	2.8	8.6	UPPER	NONE	YES				
535	FOR 2	R/A	1.48	9.28	UPPER	NONE	YES				
535LF	FOR 2	R/A	1.48	9.28	UPPER	NONE	YES				
545	FOR 2	R/A	2.5	10.3	UPPER	NONE	YES				
545LF	FOR 2	R/A	2.5	10.3	UPPER	NONE	YES				



- NONE : N 0
- LF : YES
- NONE : N 0
- H : YES (SEE FIGURE OF -xxxH)
- NONE : N 0
- M : YES (DETAIL AS COMPONENT)
- 0 : R/A (FOR LOWER & SINGLE)
- 1 : SMT STAGGERED
- 2 : SMT IN LINE
- 3 : SMT IN LINE (FOR UPPER ONLY)
- 5 : R/A
- 0 : 0mm
- 1 : 4mm
- 2 : 5mm
- 3 : 2mm (SPECIAL TAIL LENGTH)
- 4 : 2mm
- 5 : 3mm
- 0 : TOP MOUNTING
- 5 : BOTTOM MOUNTING



NOTE
1. THIS PRODUCT MEETS EUROPEAN UNION DIRECTIVES AND OTHER COUNTRY REGULATIONS AS DESCRIBED IN GS-22-008.

92140-xxxH
(OPTIONAL HOLD DOWN)

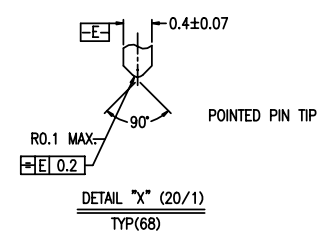
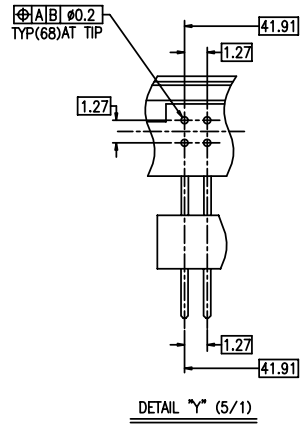
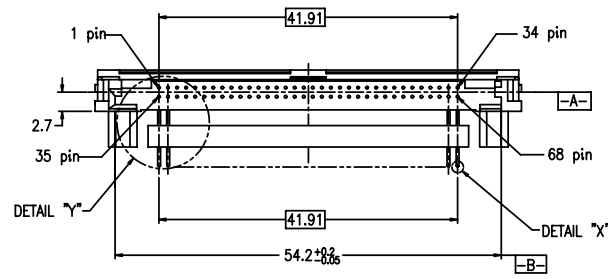
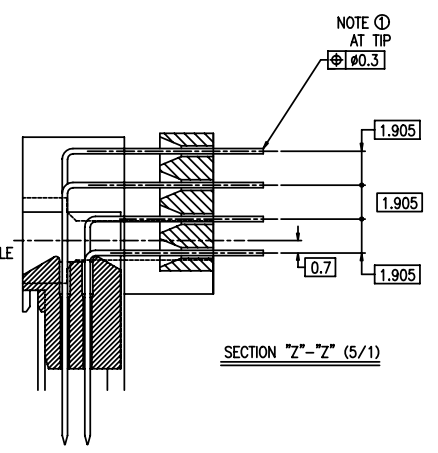
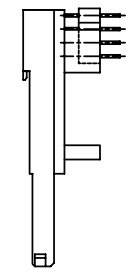
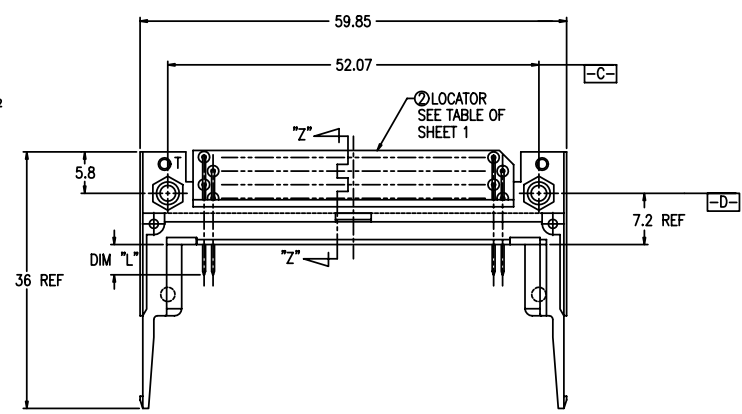
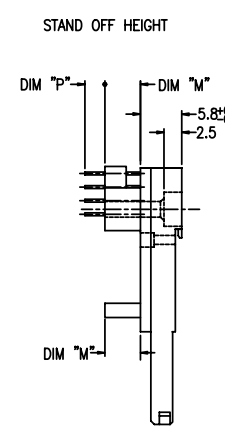
mat'l. code		surface ISO 1302		tolerance ISO 406 ISO 1101		projection		product family PCMCIA	
ltr		ecn no		dr		date		title	
AA		J05-0287		M.H		5/17/05		68 POS EJECTOR HEADER ASSY FOR 5.0V APPLICATION	
AB		N05-0279		M.Z		10/28/05			
AC		N06-0065		M.Z		04/03/06			
AD		N06-0286		M.Z		11/22/06			
AE		N07-0026		D.T		1/29/07			
AF		N07-0114		C.M		05/14/07			
AG		N07-0209		M.Z		11/14/08			
sheet		revision		AG		AG		AG	
index		sheet		1		2		3	

FCI CONFIDENTIAL



This document is the property of and embodies CONFIDENTIAL and PROPRIETARY information of FCI. No part of the information shown on this document may be used in any way or disclosed to others without the written consent of FCI.
Copyright FCI

PRODUCT NO.	PRODUCT NO.
92140-010	92140-010LF
92140-010H	92140-010HLF
92140-020	92140-020LF
92140-020H	92140-020HLF
92140-040	92140-040LF
92140-050	92140-050LF
92140-050H	92140-050HLF
92140-020MLF	92140-040HLF
92140-0201MLF	



- NOTES
- TRUE POSITION IS A FREE GRID TO PIN PATTERN ITSELF.
 - SEE TA-946 FOR PCB LAYOUT.
 - MATERIAL
HOUSING : LCP UL94V-0 BLACK.
PIN : COPPER ALLOY
HOLD-DOWN : BRASS
 - FINISH PIN
UNDER PLATING : 0.5um MIN. Ni.
CONTACT AREA 1 : 0.1um MIN. Au.
OVER 0.5um MIN. Pb-Ni.
CONTACT AREA 2 : 0.25um MIN. Au(FOR -XXXMLF).
SOLDER AREA : 2.5um MIN. Sn-Pb.
OR 2.5um MIN. PURE Sn.(FOR -XXXLF&XXXMLF)
HOLD-DOWN : 2.5um MIN. PURE Sn.
 - RECOMMENDED PCB HOLE (OPTIONAL HOLD-DOWN) : 2.3±0.1
 - SEQUENCE PIN ASSIGNMENT

PIN No.	DIM "I"		
	4.25±0.1	3.5±0.1	5.0±0.1
OTHERS	36.67	1.17±0.04	35±0.68

- GENERAL TOLERANCE : ±0.3
- SEE SHEET 1 REGARDING COMPONENTS.
- THIS PRODUCT MEETS EUROPEAN UNION DIRECTIVES AND OTHER COUNTRY REGULATIONS AS DESCRIBED IN GS-22-008

mat'l. code		surface	tolerance	projection	product family	PCMCIA
ltr		ecn no	dr	date	title	
AG		tolerances unless otherwise specified			68 POS EJECTOR HEADER ASSY	
		angles	linear	±0.3	MM	
		±2'			scale	
		dr	Mike Zhou	11/21/06	dwg no	
		enrg	Mike Zhou	11/21/06	92140	
		chr	David Qin	11/21/06	sheet 3of 7 size	
		appd	Jack Wang	11/21/06	A4	
sheet index		revision sheet			type CUSTOMER Drawing	

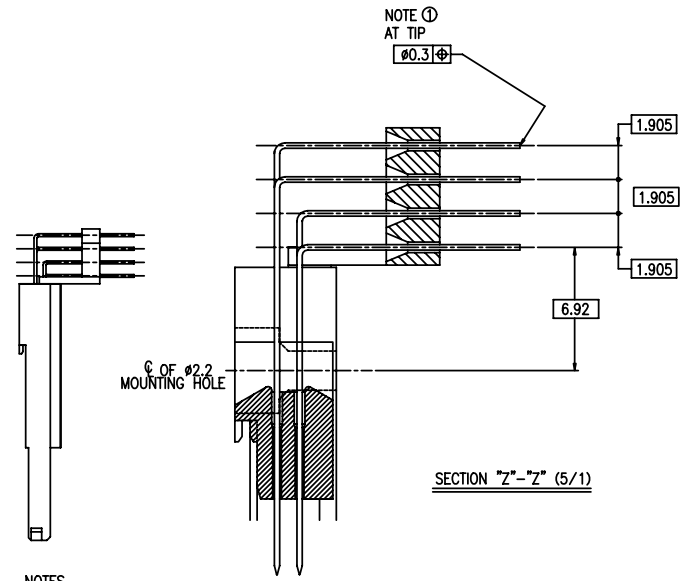
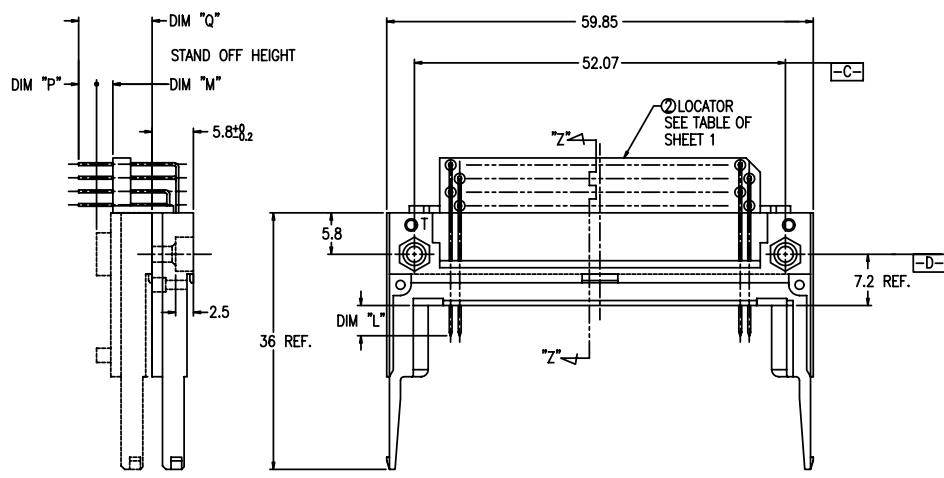
FCI CONFIDENTIAL

This document is the property of and embodies CONFIDENTIAL and PROPRIETARY information of FCI. No part of the information shown on this document may be used in any way or disclosed to others without the written consent of FCI. Copyright FCI.



FCIconnect.com

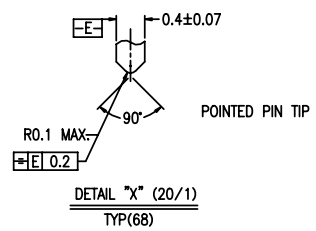
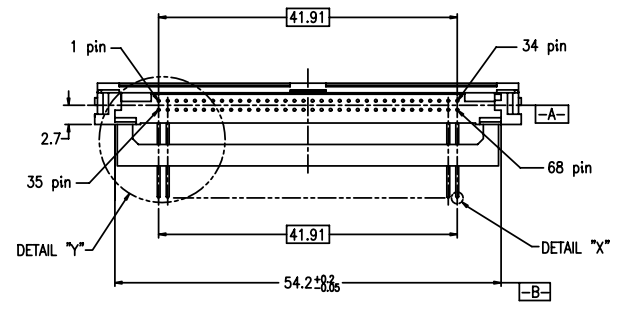
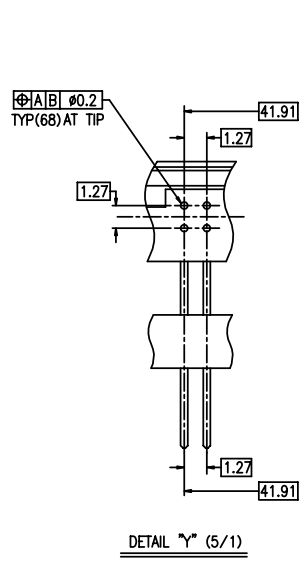
PRODUCT NO.
92140-005
92140-005LF
92140-045
92140-045LF



- NOTES
- TRUE POSITION IS A FREE GRID TO PIN PATTERN ITSELF.
 - SEE TA-946 FOR PCB LAYOUT.
 - MATERIAL
 HOUSING : LCP UL94V-0 BLACK.
 PIN : PHOSPHOR BRONZE.
 HOLD-DOWN : BRASS
 - FINISH
 PIN
 UNDER PLATING : 0.5 μ m MIN. Ni.
 CONTACT AREA : 0.1 μ m MIN. Au.
 OVER 0.5 μ m MIN. Pb-Ni.
 SOLDER AREA : 2.5 μ m MIN. Sn-Pb.
 OR 2.5 μ m MIN. PURE Sn.(FOR -XXXLF)
 HOLD-DOWN : 2.5 μ m MIN. PURE Sn.
 - RECOMMENDED PCB HOLE (OPTIONAL HOLD-DOWN) : 2.3 \pm 0.1
 - SEQUENCE PIN ASSIGNMENT

PIN No.	DIM "L"		
	4.25 \pm 0.1	3.5 \pm 0.1	5.0 \pm 0.1
OTHERS	36.67	117.34	38.51.88

- GENERAL TOLERANCE : \pm 0.3
- SEE SHEET 1 REGARDING COMPONENTS.
- THIS PRODUCT MEETS EUROPEAN UNION DIRECTIVES AND OTHER COUNTRY REGULATIONS AS DESCRIBED IN GS-22-008



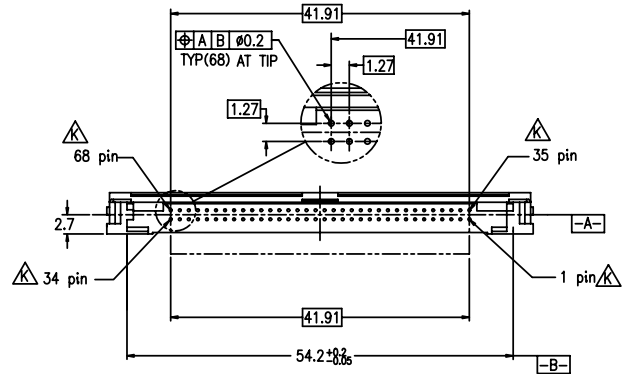
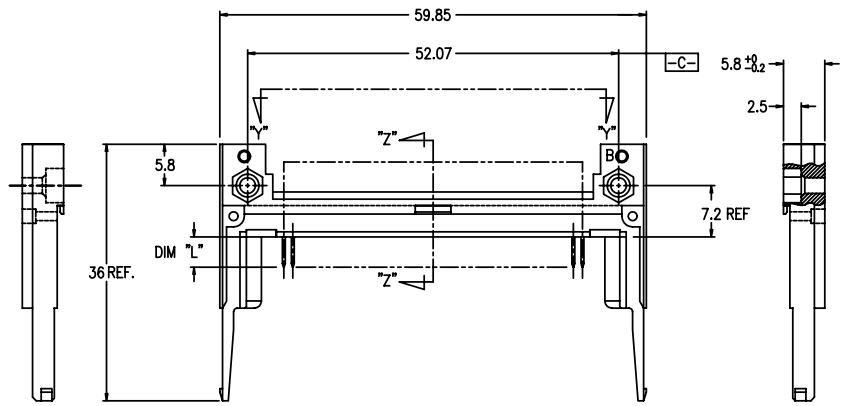
mat'l. code		surface	tolerance	projection	product family	PCMCIA
ltr		ISO 1302	ISO 406 ISO 1101		title	
ecn no		tolerances unless otherwise specified			68 POS EJECTOR HEADER ASSY FOR 5.0V APPLICATION	
dr		angles	linear	\pm 0.3	MM	
date		\pm 2°			scale	
dr		Mike Zhou	11/21/06		dwg no	
enr		Mike Zhou	11/21/06		92140	
chr		David Qin	11/21/06		sheet 4 of 7 size	
appd		Jack Wang	11/21/06		A4	
type		CUSTOMER			Drawing	
sheet	revision					
index	sheet					

FCI CONFIDENTIAL



This document is the property of and embodies CONFIDENTIAL and PROPRIETARY information of FCI. No part of the information shown on this document may be used in any way or disclosed to others without the written consent of FCI. Copyright FCI.

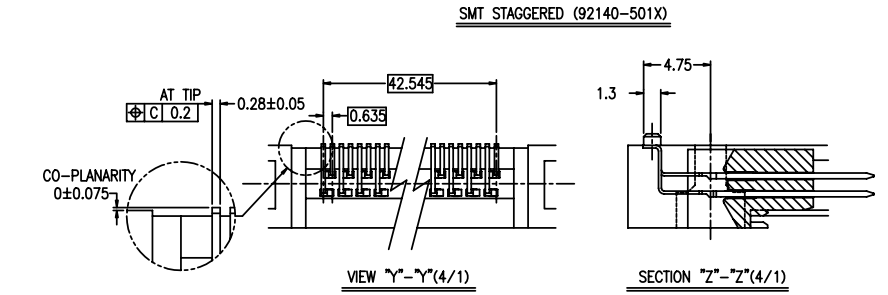
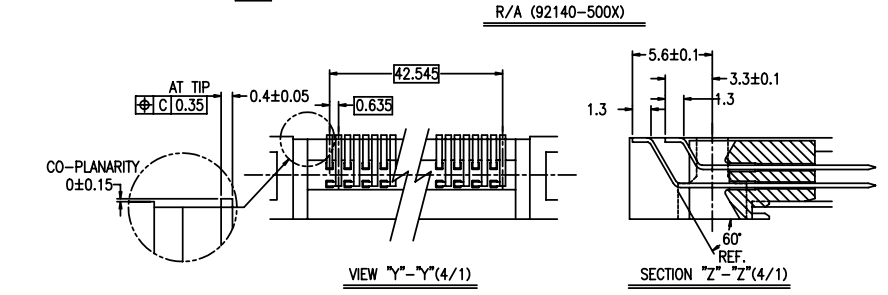
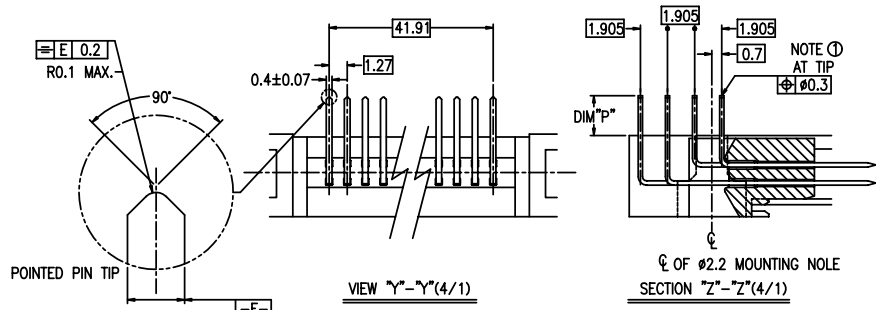
PRODUCT NO.
92140-500
92140-500LF
92140-500H
92140-500HLF
92140-501
92140-501LF
92140-501H
92140-501HLF
92140-502
92140-502LF
92140-502H
92140-502HLF
92140-503
92140-503LF



- NOTES
- TRUE POSITION IS A FREE GRID TO PIN PATTERN ITSELF.
 - SEE TA-946 FOR PCB LAYOUT.
 - MATERIAL
HOUSING : LCP UL94V-0 NATURAL.
PIN : PHOSPHOR BRONZE.
HOLD-DOWN : BRASS
 - FINISH
PIN
UNDER PLATING : 0.5µm MIN. Ni.
CONTACT AREA : 0.1µm MIN. Au.
OVER 0.5µm MIN. Pb-Ni.
SOLDER AREA : 2.5µm MIN. Sn-Pb.
OR 2.5µm MIN. PURE Sn.(FOR -XXXLF)
HOLD-DOWN : 2.5µm MIN. PURE Sn.
 - RECOMMENDED PCB HOLE (OPTIONAL HOLD-DOWN) : 2.3±0.1
 - SEQUENCE PIN ASSIGNMENT

PIN No.	DIM "L"		
	OTHERS	36.67	1.17, 34, 35.68
	4.25±0.1	3.5±0.1	5.0±0.1

- GENERAL TOLERANCE : ±0.3
- SEE SHEET 1 REGARDING COMPONENTS.
- THIS PRODUCT MEETS EUROPEAN UNION DIRECTIVES AND OTHER COUNTRY REGULATIONS AS DESCRIBED IN GS-22-008



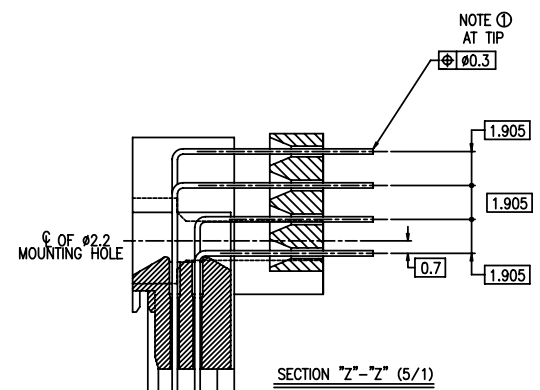
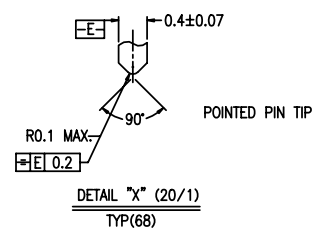
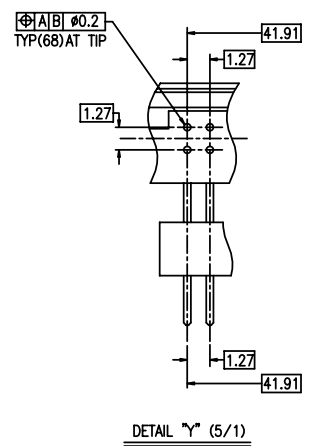
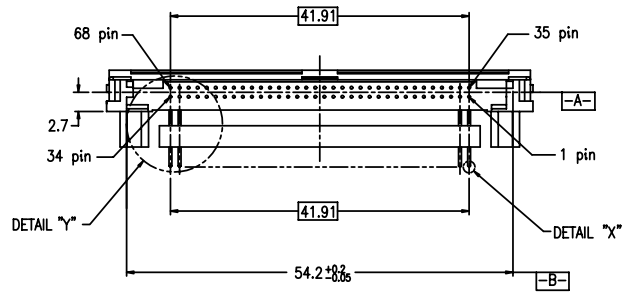
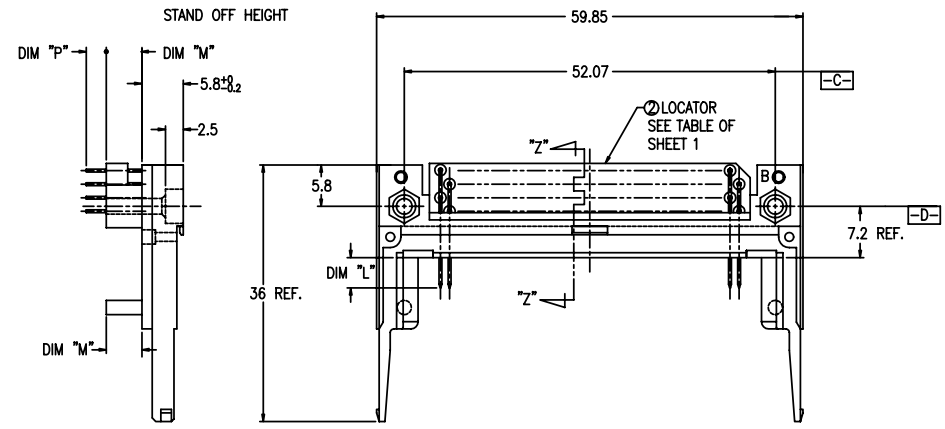
mat'l. code		surface	tolerance	projection	product family	PCMCIA
ltr		ISO 1302	ISO 406 ISO 1101		title	
ecn no	dr	tolerances unless otherwise specified			68 POS EJECTOR HEADER ASSY FOR 5.0V APPLICATION	
AG		angles	linear	±0.3	MM	
		±2'			scale	
	dr	Mike Zhou	11/21/06		dwg no	92140
	enr	Mike Zhou	11/21/06		sheet	5 of 7
	chr	David Qin	11/21/06		size	A4
	appd	Jack Wang	11/21/06		type	CUSTOMER Drawing
sheet	revision					
index	sheet					

FCI CONFIDENTIAL



This document is the property of and embodies CONFIDENTIAL and PROPRIETARY information of FCI. No part of the information shown on this document may be used in any way or disclosed to others without the written consent of FCI. Copyright FCI.

PRODUCT NO.		
92140-510	92140-510LF Δ	92140-510HLF Δ
92140-520	92140-520LF Δ	
92140-520H Δ	92140-520HLF Δ	
92140-530	92140-530LF Δ	
92140-540	92140-540LF Δ	



- NOTES
- TRUE POSITION IS A FREE GRID TO PIN PATTERN ITSELF.
 - SEE TA-946 FOR PCB LAYOUT.
 - MATERIAL
HOUSING : LCP UL94V-0 NATURAL.
PIN : PHOSPHOR BRONZE.
HOLD-DOWN : BRASS
 - FINISH
PIN
UNDER PLATING : 0.5 μ m MIN. Ni.
CONTACT AREA : 0.1 μ m MIN. Au.
OVER 0.5 μ m MIN. Pb-Ni.
SOLDER AREA : 2.5 μ m MIN. Sn-Pb.
OR 2.5 μ m MIN. PURE Sn.(FOR -XXXLF)
HOLD-DOWN : 2.5 μ m MIN. PURE Sn.
 - RECOMMENDED PCB HOLE (OPTIONAL HOLD-DOWN) : 2.3 \pm 0.1
 - SEQUENCE PIN ASSIGNMENT

PIN No.	DIM "L"		
	4.25 \pm 0.1	3.5 \pm 0.1	5.0 \pm 0.1
OTHERS	36.67	1.1754	35.5168

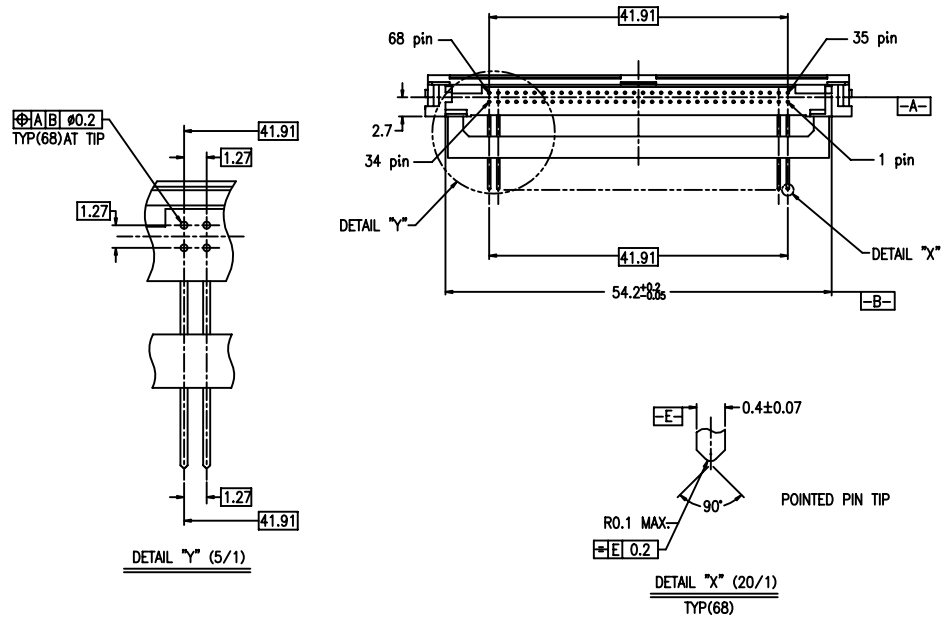
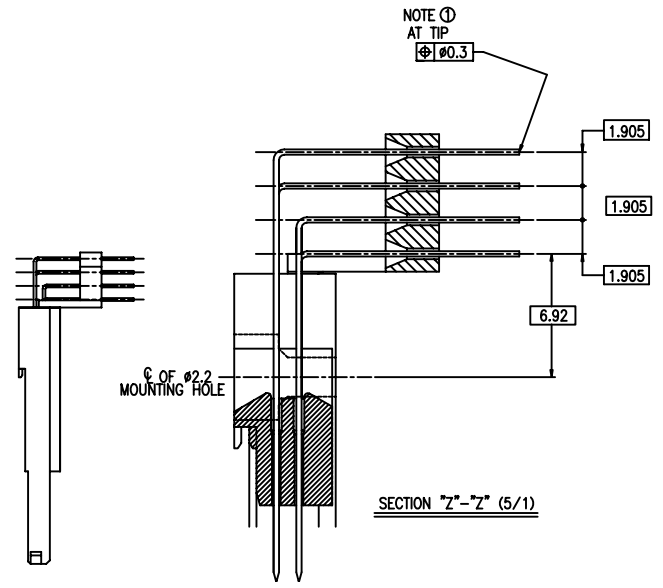
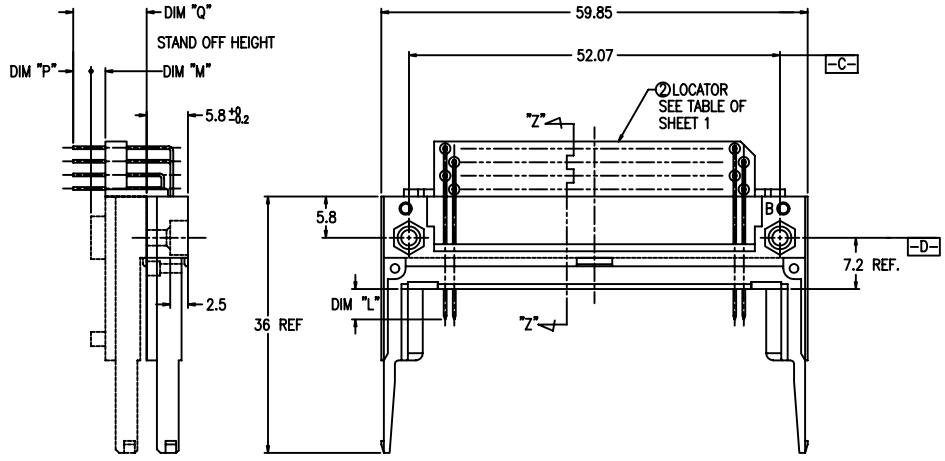
- GENERAL TOLERANCE : \pm 0.3
- SEE SHEET 1 REGARDING COMPONENTS.
- THIS PRODUCT MEETS EUROPEAN UNION DIRECTIVES AND OTHER COUNTRY REGULATIONS AS DESCRIBED IN GS-22-008

mat'l. code		surface		tolerance		projection		product family	
		ISO 1302		ISO 406 ISO 1101				PCMCIA	
ltr		ecn no		dr		date		title	
AG								68 POS EJECTOR HEADER ASSY FOR 5.0V APPLICATION	
				angles		linear		scale	
				\pm 2'				MM	
		dr		Mike Zhou		11/21/06		dwg no	
		enr		Mike Zhou		11/21/06		sheet 6 of 7 size	
		chr		David Qin		11/21/06		92140	
		appd		Jack Wang		11/21/06		A4	
sheet		revision						type	
index		sheet						CUSTOMER Drawing	

FCI CONFIDENTIAL

This document is the property of and embodies CONFIDENTIAL and PROPRIETARY information of FCI. No part of the information shown on this document may be used in any way or disclosed to others without the written consent of FCI. Copyright FCI.

PRODUCT NO.
92140-505
92140-505LFA
92140-535
92140-535LFA
92140-545
92140-545LFA



- NOTES
- TRUE POSITION IS A FREE GRID TO PIN PATTERN ITSELF.
 - SEE TA-946 FOR PCB LAYOUT.
 - MATERIAL
HOUSING : LCP UL94V-0 NATURAL.
PIN : PHOSPHOR BRONZE.
HOLD-DOWN : BRASS
 - FINISH
PIN
UNDER PLATING : 0.5µm MIN. Ni.
CONTACT AREA : 0.1µm MIN. Au.
OVER 0.5µm MIN. Pb-Ni.
SOLDER AREA : 2.5µm MIN. Sn-Pb.
OR 2.5µm MIN. PURE Sn.(FOR -XXXLF)
HOLD-DOWN : 2.5µm MIN. PURE Sn.
 - RECOMMENDED PCB HOLE (OPTIONAL HOLD-DOWN) : 2.3±0.1
 - SEQUENCE PIN ASSIGNMENT

PIN No.	DIM "L"		
	4.25±0.1	3.5±0.1	5.0±0.1
OTHERS	36.67	11.74	35.51.68

- GENERAL TOLERANCE : ±0.3
- SEE SHEET 1 REGARDING COMPONENTS.
- THIS PRODUCT MEETS EUROPEAN UNION DIRECTIVES AND OTHER COUNTRY REGULATIONS AS DESCRIBED IN GS-22-008

mat'l. code		surface	tolerance	projection	product family	PCMCIA	
ltr		ISO 1302	ISO 406 ISO 101		title		
ecn no		tolerances unless otherwise specified			68 POS EJECTOR HEADER ASSY FOR 5.0V APPLICATION		
dr		angles	linear	±0.3	MM		
engr		±2'	scale			dwg no 92140 sheet 7 of 7 size A4	
chr		dr Mike Zhou	11/21/06				type CUSTOMER Drawing
appd		engr Mike Zhou	11/21/06				
revision		chr David Qin	11/21/06				
sheet index		revision sheet					