

Switching element

92-851.342



<https://eao.com/p/92-851.342>

Your product:



92-851.342 Switching element

ELECTRICAL CHARACTERISTICS

Contacts:	1 NO						
Electrical lifetime:	≥500 000 cycles of operation at 42VDC, 50mA, according to IEC 60512-5-9c, When attention is paid to the direction of current flow from terminal 3/4 to 1/2 the electrical life can be prolonged.						
Switching voltage and switching current:	<table><tr><td>Switching voltage</td><td>min. 50 m VAC/DC max. 42 VAC/DC</td></tr><tr><td>Switching current</td><td>min. 10 µA AC/DC max. 100 mA AC/DC</td></tr><tr><td>Power rating</td><td>max. 2 W</td></tr></table>	Switching voltage	min. 50 m VAC/DC max. 42 VAC/DC	Switching current	min. 10 µA AC/DC max. 100 mA AC/DC	Power rating	max. 2 W
Switching voltage	min. 50 m VAC/DC max. 42 VAC/DC						
Switching current	min. 10 µA AC/DC max. 100 mA AC/DC						
Power rating	max. 2 W						
Electric strength:	500 VAC, 50 Hz, 1 minute according to DIN IEC 60512-2-4a						

MECHANICAL CHARACTERISTIC

Terminal:	PCB terminal
Operating Travel:	ca. 0.5 mm
Weight:	0.001 kg
Contact material:	Gold
Switching action:	Momentary
Switching system:	Short-travel element
Mechanical lifetime:	≥1 Mio. cycles of operation (switching element under overlay), ≥5 Mio. cycles of operation (switching element without overlay)
Operating force:	4.0 N ±0.2 N
Switching system:	Short-travel snap-action switching system with two independent contact points and tactile operation Guarantees reliable switching even of very light loads. 1 normally open contact

AMBIENT CONDITION

Operating temperature:	- 25 °C ... + 70 °C
-------------------------------	---------------------

Storage temperature: - 40 °C ... + 85 °C

IP Protection: IP40 switching element (fluxproof to DIN 41640 Part 84), IP65 (front side with overlay foil)

CERTIFICATE

Conformities: CE, UKCA, 2011 / 65 / EC (RoHS)

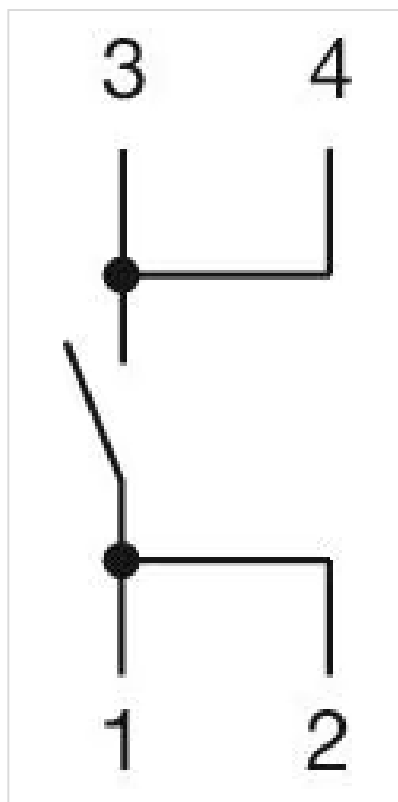
OTHER

Material: Plastic

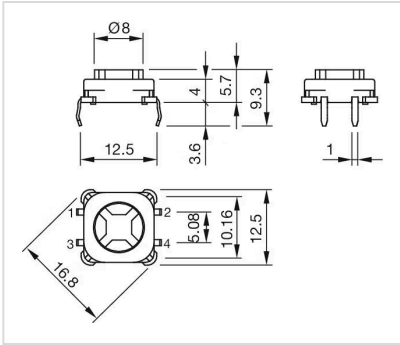
Hints: The customer has to decide what series resistor shall be used to the LED, LED and mounting flange to be ordered separately

Short Description: Switching element, Short-travel element, 42 V @ 0,1 A, Gold, 1 NO, PCB terminal

Wiring diagrams:



Dimension drawings:



Component layouts:

