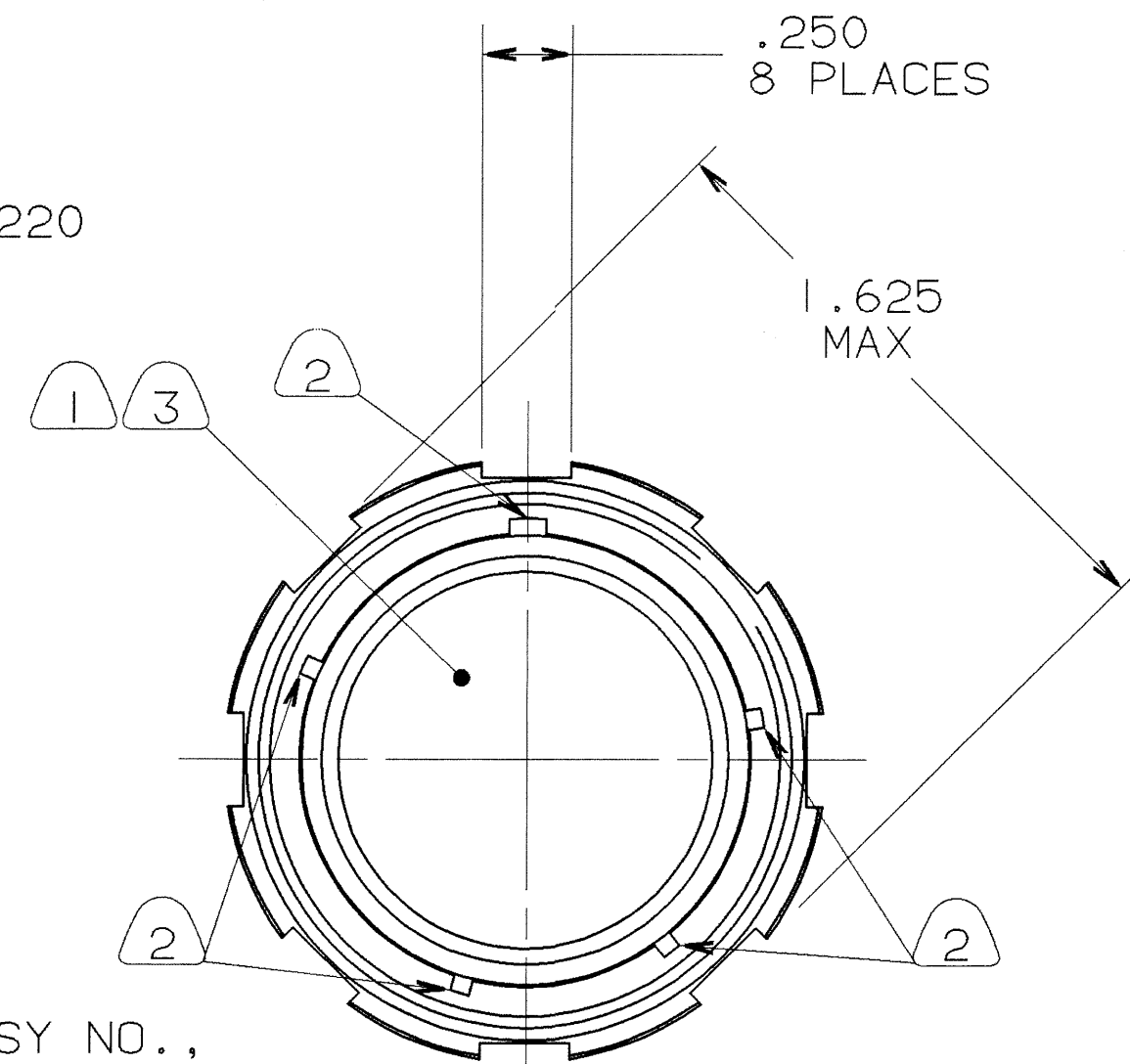
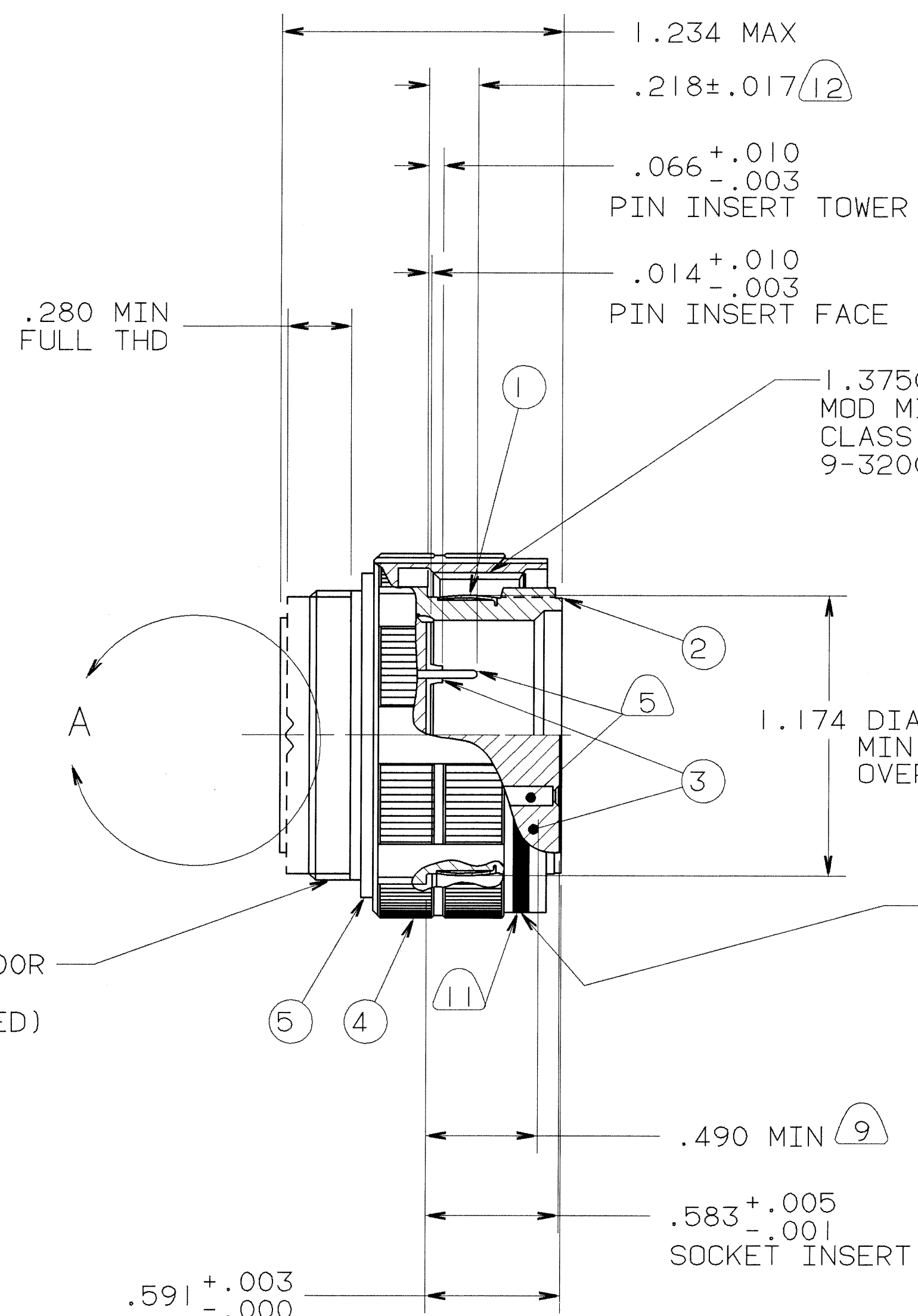


2/22/88 10:27 \* 88053 10:24 \* PRELISE \* 91-558544 A001

REVISIONS				
ZONE	LTR	DESCRIPTION	DATE	APPROVED
✓	A	INITIAL RELEASE NUM: 70000-69		
	B	(CL II) WAS 10-552934-219, (10-552934-21G) ECN: 25439	7/25/91 PRESCOTT	Sheplev OM
	C	(CLII) ADDED NOTE 14 ECN: 81244	2/12/96 ALGER	9/18/96 Gony



M3IX1-6g 0.100R  
THREAD PER  
9-7543 (PLATED)

STAMP "BENDIX", ASSY NO.,  
LOT NO. AND DATE CODE  
(9-3895) PER 9-5788 (13)  
EXAMPLE:  
BENDIX 91-558544-75S 001000 8809  
FOR ROTATED KEYS  
EXAMPLE:  
BENDIX 91-558544-75H 001000 8809



6	SEE NOTE 4	SEE NOTE 14	INSULATOR ASSY	
5	1	10-483953-121	SNAP RING	
4	1	10-552934-21G	COUPLING NUT	
3	1	10-538177-()P	INSERT, PIN	3,6
3	1	10-552447-()P	INSERT, PIN	3,6
3	1	10-417321-()S	INSERT, SOCKET	3,6
3	1	10-555421-()S	INSERT, SOCKET	3,6
2	1	10-538762/67-21H	SHELL	
1	1	10-442297-218	GROUNDING STRAP	

UNLESS OTHERWISE SPECIFIED  
LINEAR DIMENSIONS ARE IN  
INCHES.  
TOLERANCES: .XXX±.010,  
.XX ±.03, .X ±.1,  
ANGLES ±2°.  
OTHER STANDARDS PER 9-3800  
AND DOD-D-1000.  
NOTE REF. = (X)

FIND NO.	QTY REQD.	FSCM NO.	PART NUMBER	DESCRIPTION	NOTE REF.
PARTS LIST					
SPECIFICATIONS		SIGNATURES		DATES	
MATERIAL SPEC.		PREPARED CODINGTON		2/5/88	
N/A		CHECKED BARR K		2/21/88	
PROCESS SPEC.		APPROVED S. DeMatter		2-23-88	
SEE NOTE 8		APPROVED S. DeMatter		2-23-88	
		MATERIAL		CONNECTOR ELECTRICAL PLUG, TYPE TV06RF21, L/C, ELECTROLESS NICKEL COATING	
		1ST PART NO.		SIZE FSCM NO. C 77820 91-558544	
				SCALE 2/1 WT. REF 91-538240/49 SHEET 1 OF 2	

SEE SHEET 2.

NOTES:

THE USE OF THIS DOCUMENT IS UNLIMITED.  
HOWEVER, DOCUMENTS REFERENCED HEREON  
MAY CONTAIN LIMITED RIGHTS DATA.

N/A  
N/A  
NEXT ASSEMBLY

COMPUTER GENERATED DRAWING

00000001

02071

REF 91-538240/49 SHEET 1 OF 2

TAB.

91-558544

A

4

3

2

1

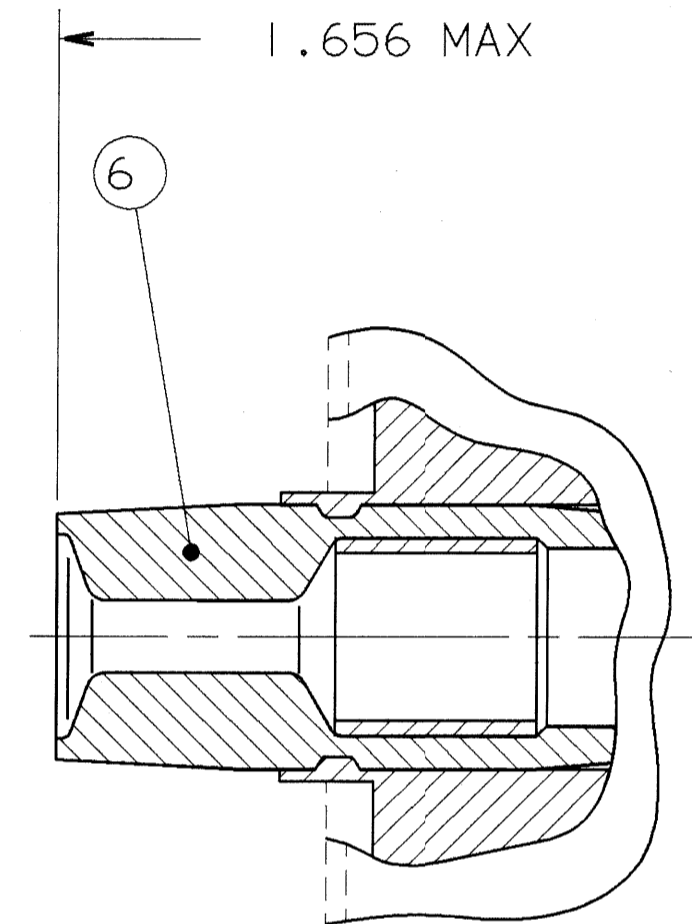
ASSY NO.

TVS NO.  
REF

91-558544-75()

06RF-21-75()

FOR ALTERNATE ARRANGEMENT  
SUBSTITUTE APPLICABLE SUFFIX  
LETTER PER 9-2437-25



VIEW A

ENLARGED

COAXIAL CONTACT ONLY

- 4. INSULATOR ASSY TO BE SUPPLIED WHEN GROMMET DESIGN REQUIRES ONE (ALL COAX, SOME TWINAX).  
EXAMPLE: 21-AB (TWINAX ARRANGEMENT)  
REQUIRES TWINAX INSULATOR P/N 21-33321-005  
21-75 (COAX ARRANGEMENT)  
REQUIRES COAX INSULATOR P/N 10-452952  
21-20 (TWINAX ARRANGEMENT) NO INSULATOR

- 7. PACKAGE PER PRODUCTION PROCESS SHEET.
- 6. SEE SEPARATE PARTS LIST FOR COMPONENT NUMBERS AND QUANTITIES.
- 5. DRAWING ILLUSTRATES FINAL ASSEMBLY. CONTACTS ARE NOT PART OF THIS ASSEMBLY AND MUST BE PURCHASED SEPARATELY.
- 4. FOR FINAL INSTALLATION, CONTACTS MUST BE ASSEMBLED INTO ALL INSERT HOLES. ALL UNUSED GROMMET HOLES MUST BE FILLED WITH THE APPROPRIATE SIZE SEALING PLUG.
- 3. INSERT ASSEMBLY IS NOT REMOVABLE.
- 2. ALTERNATE ROTATIONS ARE OBTAINED BY ROTATING INDICATED KEYS. SIX POSITIONS ARE AVAILABLE. SEE 9-2437-25. ROTATION IDENTIFICATION LETTER APPEARS ON INDICATED SURFACE. NORMAL ROTATION NOT IDENTIFIED.
- 1. FOR CONTACT ARRANGEMENT PATTERN, SEE L-15221-(). ALTERNATE POSITIONS THERON DO NOT APPLY.

- 13. SEE WORK ORDER FOR PERMISSIBLE ADDITIONAL OR ALTERNATE STAMPING.
- 12. FOR SIZE 8 COAX DIMENSION IS .438±.025.
- 11. BLUE BAND DENOTES REAR RELEASE CONTACT SYSTEM.
- 10. UNITS ILLUSTRATED MEET THE APPLICABLE REQUIREMENTS OF MIL-C-38999.
- 9. DISTANCE FROM SHOULDER OF SHELL TO THE POINT AT WHICH A GAGE PIN, HAVING THE SAME BASIC DIAMETER AS THE MATING CONTACT AND A SQUARE FACE, ENGAGES SOCKET CONTACT SPRING.
- 8. PROCESS SPEC:  
TEST 9-5726  
ASSY 9-5047-5, 9-4407-13, 9-7374-1  
SPECIAL CONTROL 9-6000-5  
PROCESS SHEET CONTROL 9-4796  
9-2437-25, 9-5788, 9-3895  
9-3200-2, 9-7543



COAXIAL DATA
RG 180/U
RG 195/U

NOTES:

THE USE OF THIS DOCUMENT IS UNLIMITED. HOWEVER, DOCUMENTS REFERENCED HEREON MAY CONTAIN LIMITED RIGHTS DATA.

SIZE C	FSCM NO. 77820	91-558544	REV C
SCALE	WT.	REF	SHEET 2

COMPUTER GENERATED DRAWING

TAB.

91-558544

B

A

D

D

C

C

B

A