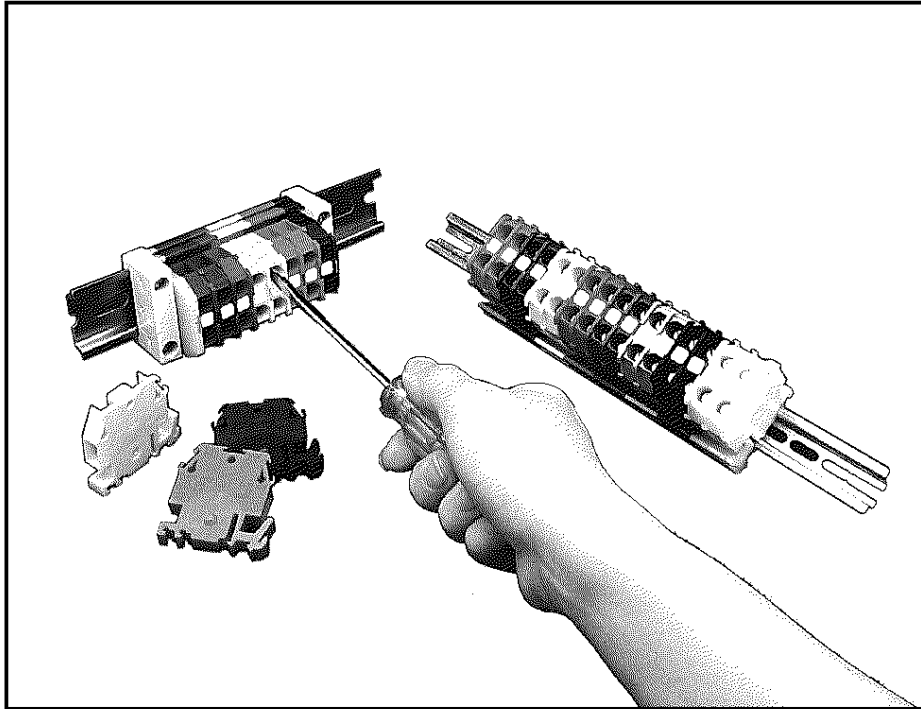


Class 9080 Type GR6 Box Lug Terminal Block



Square D's NEW Class 9080 Type GR6 box lug terminal block provides dual mounting capability and a large screwdriver opening

- **The dual mounting feature** allows maximum mounting flexibility onto 35mm DIN 3 or 9080 GH mounting track, while reducing the number of parts required.
- **Large screwdriver opening:** This block eliminates the need for a special, smaller screwdriver and makes the process of tightening the screw easier, saving time.
- **Wide wire range:** The GR6 terminal block accepts #22 to #8 AWG wire, making it ideal for almost any control wiring application.
- **Four sided wire entry** makes guiding stranded wire into the box lug easier, reducing wiring time and improving the quality of the wire termination.
- **600 volt rated:** This voltage rating makes the GR6 terminal block ideal for any control application.
- **Top marking area:** A marking area is supplied as standard, eliminating the need for a separate marking means.
- **Colored blocks:** Troubleshooting a circuit can be made easier by color coding different voltages and circuits. Blocks are available in white (standard), black, blue, green, grey, orange, red and yellow.

■ **UL Component Recognized:**
File 60616, Guide XCFR2

■ **CSA Listed:** LR62144, Class 6228 01



SQUARE D
GROUPE SCHNEIDER

Box Lug Terminal Block

BLOCKS			END BARRIER		
Catalog Number	Block Color	Standard Pack [^]	Catalog Number	Barrier Color	Standard Pack [^]
9080GR6	White	50	GM6B	White	10
9080GRB6	Black		GMB6B	Black	
9080GRL6	Blue		GML6B	Blue	
9080GRG6	Green		GMG6B	Green	
9080GRE6	Grey		GME6B	Grey	
9080GRS6	Orange		GMS6B	Orange	
9080GRR6	Red		GMR6B	Red	
9080GRY6	Yellow		GMY6B	Yellow	

[^] Orders must specify standard package quantities or multiples of that quantity.

For a listing of track and additional accessories, reference the Square D Digest 170.

Max voltage rating: 600 volts

Max amperage rating: 60 amperes

Wire range: #22 to #8 AWG

Max wire combinations:

1 - #8 1 to 5 - #18
 1 to 3 - #12 1 to 8 - #20
 1 to 4 - #14 1 to 10 - #22
 1 to 4 - #16

Wire type: Solid or stranded copper wire

Density: 35 blocks per foot of track

Block material: Nylon



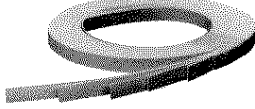


Box lug material: Copper

Temperature rating: -40° to 257°F
 -40° to 125°C

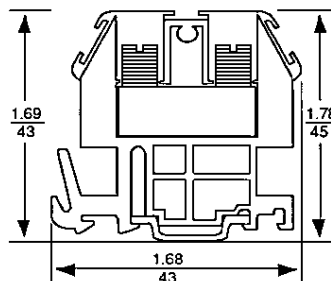
Flammability rating: UL94V2

Recommended screw tightening torque:

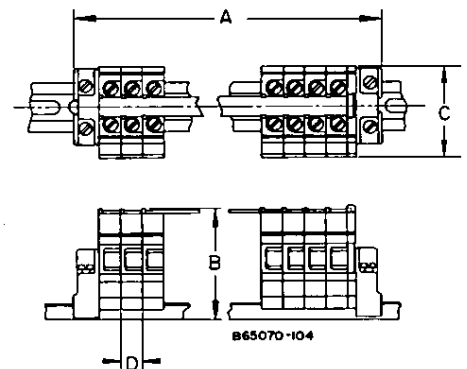
18-20 lbf.-in. (2.1-2.3 N-m)

Description	Catalog Number	Standard Pack
 6 Pole Jumper	9080GH72	10
 2 Pole Jumper	9080GH73	20
 25 ft. blank vinyl marking strip	9080GH220	1
 Vinyl marking strip (numbered 1 to 25)	9080GH21	5
 Marking strip end plug	9080GH60	50

Dimensions



Assemblies



Dim. A * (in.)	Dim. B (in.)	Dim. C (in.)	Dim. D (in.)	Max. Sect. per foot (nominal)
.35N + .93	1.82 [†]	1.68	.35	35

* Where N is total number of sections. If slip-on end clamps are used, subtract .8 inches.

Bulletin No. 9080HO9501
 June, 1995
 © 1995 Square D All Rights Reserved

Square D Company
 P.O. Box 27446
 Raleigh, NC 27611



SQUARE D
 GROUPE SCHNEIDER