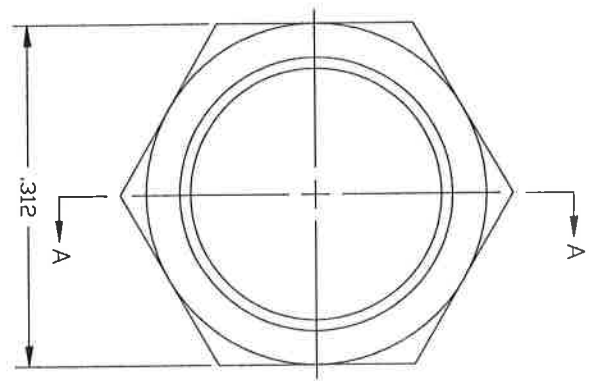


30° CHAMFER TO HEX FLATS BOTH SIDES.

45° CHAMFER TO MAJOR DIA. BOTH SIDES

1/4-36 UNS-2B THREAD

.062 ± .003



SECTION A-A

- NOTES:
1. ELECTROLESS NICKEL PLATE PER AMPHENOL SPEC. 949-1012, CLASS 1, GRADE F.
  2. PART MUST MEET ROHS SPECIFICATION PER AMPHENOL PROCEDURE 949-1604.

UNLESS OTHERWISE SPECIFIED TOLERANCE TO BE:	LINEAR	ANGULAR
XXX ± .02	XXX ± .1	XXX ± 1°
XXXX ± .005	XXXX ± .05	XXXX ± .5°

BREAK ALL SHARP EDGES AND REMOVE ALL BURRS

DO NOT SCALE

THIRD ANGLE PROJECTION

SCALE: 8:1

APVD: D. BERGMAN

DATE: 6/05/86

DATE: 4/07/86	REV: A	DESCRIPTION: FIRST ISSUE	APVD: DUB	DATE: 6/11/86	ECCO No
DATE: 6/06/86	REV: B	DESCRIPTION: CHANGED PLATING SPEC.	APVD: SCC	DATE: 5/01/89	ECCO No
DATE: 6/05/86	REV: C	DESCRIPTION: MATERIAL WAS BRASS/LAD C38000 OR EQUIV TO WATERLAD NEW BORDER ADD NOTE 2	APVD: SCC	DATE: 5/10/06	ECCO No

HEX NUT

SIZE: B

905-5087

Amphenol

FIBER OPTIC PRODUCTS

1 OF 1 SHEET