

RAMO®





RAMO®

PAYS OFF.

The new **RAFI** key switch series with mounting hole diameters of 22 and 30 mm is perfect for simple integration in your application. This is ensured even in difficult space conditions, thanks to the low overall height and mounting depth, as well as the **RAMO EDGE** mounting bracket, which you can use to assemble the operating elements and indicators directly on profiles without an additional housing.

The Plug & Play M12 terminal enables secure and flexible assembly with an efficient use of both cabling and working time. And that's not all: With the **RAMO T** key switches, the built-in **RAFI MICON 5** tactile switch ensures high switching reliability and distinctive tactility.

**We combine industry standards with innovative technology.
So you save time and costs.**

YOU CAN'T AFFORD DOWNTIMES.

BUT YOU CAN AFFORD A RAMO FROM RAFI.

With the **RAMO**, we have developed a series that is well thought out from start to finish – with the focus on fast assembly, optimal use of space and safe switching, and always with the goal of making integration in your application as easy as possible.





MADE IN GERMANY

German design and engineering.



MICON 5 INSIDE

The integrated RAFI MICON 5 tactile switch offers a distinctive feel with high switching reliability.



SINGLE-PART CLOSED HOUSING

Degrees of protection of at least IP 65. Stand-alone capability without additional seal.



PLUG & PLAY

The M12 plug can be connected quickly, and the cable can be configured and preassembled flexibly, enabling schedule-independent wiring.



SMALL SPACE REQUIREMENTS

Thanks to the flat design in front of and behind the front panel and the plug angled at 135° for tight row mounting – horizontally and vertically.



FLEXLAB

Individual legending with legend inserts.



EDGE

Flexible, decentralized assembly with RAMO EDGE – on aluminum profile rails, walls, tables or workbenches.



DOZENS OF TYPES.

ONE FAMILY.

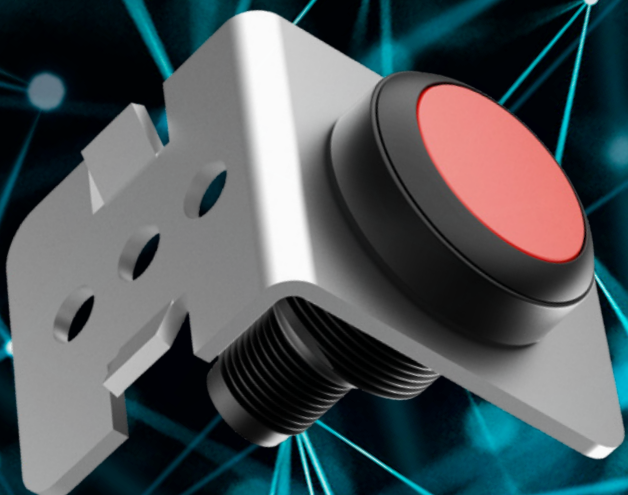
RAMO 22 AND RAMO 30.

The **RAMO 22** series with a mounting hole diameter of 22 mm includes a number of different variants: key switches, keylock switches, selector switches, emergency stops, USB 3.0 and RJ 45 cable bushings as well as signal lamps.

RAMO 30 for a mounting hole diameter of 30 mm offers the same variety of components as RAMO 22. At the same time, the series appeals to the design-focused user thanks to its flat design and stainless steel front ring. The bezel of the RAMO 30 T key switch, which is available in stainless steel, provides additional stylish refinement.

FLEXLAB offers you many options for individual legending of both RAMO series. And if this doesn't meet your needs, customized solutions are of course also available on request.

With **EDGE**, the **RAMO** can be mounted on profiles and without an additional insulated housing. This creates additional freedom during assembly as well as new ways of positioning the components away from the central machine or device control panel.



THE NEXT GENERATION OF KEY SWITCHES.

AT A GLANCE.



RAMO 22



RAMO 22 T
Pushbutton



RAMO 22 T
Pushbutton
with FLEXLAB



RAMO 22 I
Signal lamp



RAMO 22 K
Keylock switch



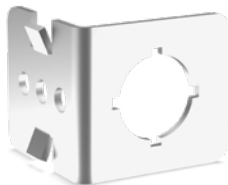
RAMO 22 S
Selector



RAMO 22 E
Emergency



RAMO 22 F
USB 3.0 or RJ 45
cable bushing



RAMO 22 EDGE
Mounting bracket

RAMO 30



RAMO 30 T
Pushbutton with
stainless steel
front ring



RAMO 30 T
Pushbutton with
FLEXLAB



RAMO 30 T
Pushbutton with
stainless steel bezel
and ring lighting



RAMO 30 I
Signal lamp



RAMO 30 K
Keylock switch



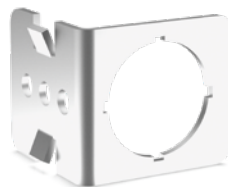
RAMO 30 S
Selector



RAMO 30 E
Emergency



RAMO 30 F
USB 3.0 or RJ 45
cable bushing



RAMO 30 EDGE
Mounting bracket

FULLY SEALED.

FULLY SUPPORTED.



RAMO is the answer to many questions. However, if you have any other queries, simply get in touch. Our service team will be pleased to assist you.

TECHNICAL SUPPORT
+49 751 89-6500

You can find all technical data and different variants in our online catalog.

TECHNICAL DATA
COMPONENTS.RAFI.DE



The information in this brochure contains general descriptions and performance characteristics which may not apply exactly in the concrete application and/or which can change due to further development of the products. The technical data, images and other details of our products are merely the results of individual technical tests. These and other performance characteristics are only binding when they are expressly agreed upon conclusion of the contract.

Otherwise, the following applies:
We reserve the right to change delivery options and technical details. Products are similar to the images and other forms of representation.
All product designations can be brands or product names of the RAFI Group or other suppliers whose use by third parties for their own purposes may violate the owner's rights.

RAFI GmbH & Co. KG

Ravensburger Str. 128–134, D-88276 Berg/Ravensburg
Phone: +49 751 89-0, Fax: +49 751 89-1300
www.rafi.de, info@rafi.de

RAFI