



Part Number : [03062061](#)

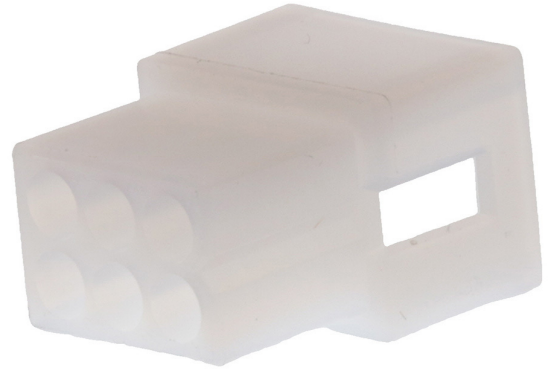
Product Description : 1.57mm Diameter Standard .062" Pin and Socket Plug Housing, 6 Circuits, without Mounting Ears, Natural

Series Number : 1625

Status : Active

Product Category : Connector Housings

Engineering Number : 1625-6P1



Documents & Resources

Drawings

[003062061_sd.pdf](#)

3D Models and Design Files

[003062061_stp.zip](#)

Specifications

[PK-1625-003-001.pdf](#)

[PS-02-06-001.pdf](#)

Product Environment Compliance

Compliance

| | |
|--------------------|--|
| GADSL/IMDS | Not Relevant |
| China RoHS | |
| EU ELV | Not Relevant |
| Low-Halogen Status | Low-Halogen per IEC 61249-2-21 |
| REACH SVHC | Not Contained per D(2024)6225-DC (07 Nov 2024) |
| EU RoHS | Compliant per EU 2015/863 |

Multiple Part Product Compliance Statements

- Eu RoHS
- REACH SVHC
- Low-Halogen

Multiple Part Industry Compliance Documents

- IPC 1752A Class C
- IPC 1752A Class D
- Molex Product Compliance Declaration
- IEC-62474
- chemSHERPA (xml)

EU RoHS Certificate of Compliance

Part Details

General

| | |
|--------------|--|
| Status | Active |
| Category | Connector Housings |
| Series | 1625 |
| Description | 1.57mm Diameter Standard .062" Pin and Socket Plug Housing, 6 Circuits, without Mounting Ears, Natural |
| Application | Power, Wire-to-Wire |
| Comments | Polarized to Mating Part |
| Product Name | Standard .062" |
| UPC | 800753615243 |

Agency

| | |
|-----|---------|
| CSA | LR19980 |
| UL | E29179 |

Physical

| | |
|-----------------------|---------|
| Breakaway | No |
| Circuits Detail | 2x3 |
| Circuits (maximum) | 6 |
| Color - Resin | Natural |
| Flammability | 94V-2 |
| Gender | Plug |
| Glow-Wire Capable | No |
| Keying to Mating Part | None |
| Lock to Mating Part | Yes |
| Material - Resin | Nylon |

| | |
|-------------------------------|----------------|
| Net Weight | 1.417/g |
| Number of Rows | 3 |
| Packaging Type | Bag |
| Panel Mount | No |
| Pitch - Mating Interface | 3.68mm |
| Pitch - Termination Interface | 3.68mm |
| Polarized to Mating Part | Yes |
| Stackable | No |
| Temperature Range - Operating | -40° to +105°C |

Solder Process Data

| | |
|------------------------------|-----|
| Lead-Free Process Capability | N/A |
|------------------------------|-----|

Mates With / Use With

Mates with Part(s)

| Description | Part Number |
|--|-----------------|
| 1.57mm Diameter Standard .062" Pin and Socket Receptacle Housing, 6 Circuits, without Mounting Ears, Natural | <u>03061062</u> |
| 1.57mm Diameter Standard .062" Pin and Socket Receptacle Housing, 6 Circuits, without Mounting Ears, Black | <u>03066062</u> |

Use with Part(s)

| Description | Part Number |
|--|-------------|
| Standard .062" Pin and Socket Female Crimp Terminals | <u>1561</u> |
| Standard .062" Pin and Socket Female Crimp Terminals | <u>1855</u> |
| Standard .062" Pin and Socket Male Crimp Terminals | <u>1560</u> |
| Standard .062" Pin and Socket Male Crimp Terminals | <u>1854</u> |
| Standard .062" Pin and Socket Male PC Tail Terminals | <u>1778</u> |
| Standard .062" Pin and Socket Female PC Tail Terminals | <u>1779</u> |

This document was generated on Feb 10, 2025