



# 8STA/8TA Fuel Immersible



## Features & Benefits

- Continuous immersion without loss of performance  
- Special fuel resistant insert
- Excellent connector sealing on panels by using the jam nut version

## Technical characteristics

	8STA		8TA
<b>Mechanical</b>			
<ul style="list-style-type: none"> <li>• Shell</li> <li>• Shell plating</li> <li>• Insulator</li> <li>• Grommet &amp; seal</li> <li>• Contact</li> <li>• Contact plating</li> <li>• Endurance</li> <li>• Shock</li> <li>• Vibration</li> <li>• Contact retention</li> </ul>		Aluminium alloy Conductive black zinc Thermoplastic Fluoroelastomer Copper alloy Gold	
		500 matings/unmatings 300 g for 3 ms and EIA-364-27	
	147 m/s <sup>2</sup> , 10 to 2000 Hz Size 22D: 45 N / Size 20: 60 N Size 16: 100 N / Size 12: 100 N		random 100 to 1000 Hz - 1G <sup>2</sup> /Hz Size 22D: 45 N
<b>Electrical</b>			
<ul style="list-style-type: none"> <li>• Test voltage</li> <li>• Contact resistance</li> </ul>		1300 Vrms	
	Size 22D: 14.6 mΩ / Size 20: 7.3 mΩ Size 16: 3.8 mΩ / Size 12: 3.5 mΩ		Size 22D: 14.6 mΩ
<ul style="list-style-type: none"> <li>• Insulation resistance at 500 Vdc</li> <li>• Contact rating</li> </ul>		≥ 5000 mΩ	
	Size 22D: 5 A / Size 20: 7.5 A Size 16: 13 A / Size 12: 23 A		Size 22D: 5 A
• Shell continuity		≤ 10 mΩ	
<b>Climatic</b>			
<ul style="list-style-type: none"> <li>• Temperature range</li> <li>• Sealing mated connectors</li> <li>• Salt spray</li> </ul>		-55°C to +175°C IP67 (1 metre for 30 min. minimum) 48 hours	
<b>Resistance to fluids</b>			
			withstands most of Motorsport fluids



# 8STA/8TA Fuel Immersible

## How to order

Basci series		8STA	0	08	35	P	N	022
		8TA	0	08	35	P	N	022
Shell style	0: Oval flange receptacle 1: In-line receptacle 6: Plug 7: Jam nut receptacle							
Shell size	04 - 08 - 10 - 12 - 14 - 16							
Layouts	See layouts available below							
Contact gender	P: Pin contacts S: Socket contacts							
Orientation	N: Red / A: Yellow / D: Green							
Specification*	022							

\*Mandatory

## Contact layouts (viewed from front face of male insulator)

<b>Size 04</b> <div style="display: flex; justify-content: space-around;"> <div style="text-align: center;"> <b>05</b>              5 #26 Service R         </div> <div style="text-align: center;"> <b>35</b>              3 #22D Service S         </div> </div>	<b>Size 08</b> <div style="display: flex; justify-content: space-around;"> <div style="text-align: center;"> <b>35</b>              6 #22D Service M         </div> <div style="text-align: center;"> <b>98</b>              3 #20 Service I         </div> </div>	<b>Size 10</b> <div style="display: flex; justify-content: space-around;"> <div style="text-align: center;"> <b>05</b>              5 #20 Service I         </div> <div style="text-align: center;"> <b>35</b>              13 #22D Service M         </div> <div style="text-align: center;"> <b>98</b>              6 #20 Service I         </div> </div>
<b>Size 12</b> <div style="text-align: center;"> <b>98</b>              10 #20 Service I         </div>	<b>Size 14</b> <div style="text-align: center;"> <b>35</b>              37 #22D Service M         </div>	<b>Size 16</b> <div style="text-align: center;"> <b>08</b>              8 #16 Service II         </div>

For both 8STA & 8TA, all others being for 8STA only.



# 8STA/8TA Fuel Immersible

## Range presentation

### Plug

Boot termination

ø A

Shell size	ø A max.	B max.	C max.
04	13.55	18.50	7.9
08	18.70	33.50	15
10	21.50		
12	25.10		
14	29.00		
16	32.20		

### In-line receptacle

Hand grip  
Boot termination

ø A

Shell size	ø A max.	ø D <sup>+0.20</sup>	G max.
04	-	10.20	18.15
08	17.60	12.00	33.50
10	20.70	15.00	
12	25.10	19.05	
14	28.30	22.22	
16	31.40	25.40	

### Oval flange receptacle

P Panel thickness  
Boot termination

L max.  
A max.  
B  
ø C

PANEL CUT OUT  
ø A  
B  
ø C

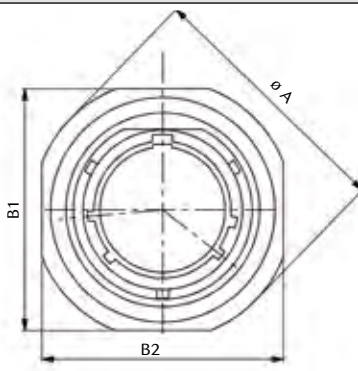
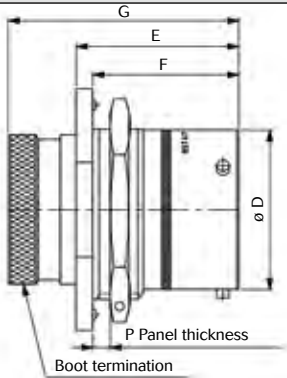
Shell size	A max.	B <sup>+0.20</sup>	ø C <sup>+0.1</sup> <sub>0</sub>	ø D <sup>+0.2</sup> <sub>-0.13</sub>	E <sub>-0.15</sub> <sup>0</sup>	F <sub>-0.13</sub> <sup>0</sup>	G max.	L max.	P max.	PANEL CUT OUT		
										ø A <sup>+0.10</sup>	B <sup>+0.20</sup>	ø C <sup>+0.20</sup>
04	13.20	16.40	2.65	10.20	10.70	9.20	18.30	20.85	2.00	12.00	16.20	3.10
08	16.50	21.40	3.20	12.00	17.21	16.05	33.50	27.20	3.00	14.50	21.40	3.60
10	19.50	25.90		15.00				32.00		17.40	25.90	
12	24.00	29.10		19.05				35.20		21.90	29.10	
14	27.00	32.50		22.22				38.40		25.00	32.50	
16	30.30	34.80		25.40				41.00		28.20	34.80	

Note : all dimensions are in mm

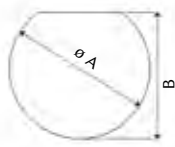


# 8STA/8TA Fuel Immersible

## Jam nut receptacle



PANEL CUT OUT



Shell size	$\varnothing A^{+0.03}$	$B1-B2^{\pm 0.24}$	$\varnothing D_{0,12}^0$	$E^{\pm 0.10}$	$F^{\pm 0.24}$	$G^{\pm 0.3}$	P max.	PANEL CUT OUT	
								$\varnothing A \pm 0.10$	$B \pm 0.20$
04	18.00	20.20	10.20	18.15	16.20	25.75	1.5 to 5.0	13.50	12.80 - 13.00
08	26.90	24.10	11.97	25.91	23.24	36.71	3.00	14.50	13.60
10	30.15	27.30	14.94					17.70	16.80
12	34.89	32.10	19.01					22.70	20.90
14	38.06	34.92	22.18					25.70	24.10
16	41.25	38.40	25.36					28.80	27.20

For other shell sizes, please consult us.