

IE-XM-ST/ST

Weidmüller Interface GmbH & Co. KG
Klingenbergstraße 26
D-32758 Detmold
Germany
www.weidmueller.com



Mounting rail outlet, ST junction design according to IEC 61754-2

General ordering data

Version	Mounting rail outlet, fibre-optic, ST-ST coupler, IP20
Order No.	8808340000
Type	IE-XM-ST/ST
GTIN (EAN)	4032248505920
Qty.	1 pc(s).

Creation date March 12, 2024 12:29:48 PM CET

Catalogue status 09.03.2024 / We reserve the right to make technical changes.

IE-XM-ST/ST

Weidmüller Interface GmbH & Co. KG

Klingenbergstraße 26

D-32758 Detmold

Germany

www.weidmueller.com

Technical data

Dimensions and weights

Net weight 27 g

Temperatures

Operating temperature -25 °C...70 °C

General data

Colour	Light Grey	Configuration	1 TE pitch dimension acc. to DIN 43880. insta-compatible Installation flange with mounting frame
Connection 1	ST	Connection 2	ST
Description of article	ST-ST coupler	Housing main material	PA 66, UL 94: V-0
Insertion loss	<0.15 dB	Plugging cycles	750
Protection degree	IP20	Type of mounting	TS 35

General standards

Connector standard IEC 61754-2

Classifications

ETIM 6.0	EC000313	ETIM 7.0	EC000313
ETIM 8.0	EC000313	ETIM 9.0	EC000313
ECLASS 9.0	27-44-03-20	ECLASS 9.1	19-17-01-25
ECLASS 10.0	27-44-03-20	ECLASS 11.0	27-44-03-20
ECLASS 12.0	27-44-03-20	ECLASS 13.0	27-44-03-20

Environmental Product Compliance

REACH SVHC	Lead 7439-92-1
SCIP	67cf1078-beca-4687-860b-dc475a6ec24a

Approvals

ROHS Conform

Downloads

Approval/Certificate/Document of Conformity	GOST Approval
Engineering Data	CAD data – STEP
Engineering Data	Zuken E3.S
User Documentation	MAN IE GUIDE DE MAN IE GUIDE EN
Catalogues	Catalogues in PDF-format
Brochures	FL FIELDWIRING EN PI PROFINET CABLING EN PI PROFINET CABLING EN

Creation date March 12, 2024 12:29:48 PM CET

Catalogue status 09.03.2024 / We reserve the right to make technical changes.

Data sheet

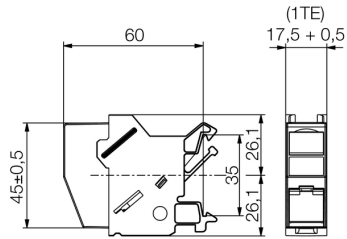
IE-XM-ST/ST

Weidmüller Interface GmbH & Co. KG
Klingenbergstraße 26
D-32758 Detmold
Germany

www.weidmueller.com

Drawings

Dimensioned drawing



IE-XM-ST/ST

Weidmüller Interface GmbH & Co. KG
Klingenbergstraße 26
D-32758 Detmold
Germany

www.weidmueller.com

Accessories**Outlet marker**

Markers for the labelling panel of terminal rail outlets from Weidmüller.

The benefits for you:

- white
- black
- on labelling sheet

General ordering data

Type	IE-DM
Order No.	8813500000
GTIN (EAN)	4032248513345
Qty.	50 pc(s).