

**PLEASE CHECK WWW.MOLEX.COM FOR LATEST PART INFORMATION**

**Part Number:** [0878312828](#)  
**Status:** **Active**  
**Overview:** [Milli-Grid Connector System](#)  
**Description:** 2.00mm Pitch, Milli-Grid PCB Header, Dual Row, Vertical, Through Hole, Shrouded, 28 Circuits, 0.38µm Gold (Au) Plating, with Center Polarization Slot, with Locking Window, with PCB Locator, Tube

**Documents:**

<a href="#">3D Model</a>	<a href="#">Application Specification 503940001-AS-000 (PDF)</a>
<a href="#">Drawing (PDF)</a>	<a href="#">Packaging Specification PK-87831-001-001 (PDF)</a>
<a href="#">3D Model (PDF)</a>	<a href="#">RoHS Certificate of Compliance (PDF)</a>
<a href="#">Product Specification PS-87831-027-001 (PDF)</a>	

**Agency Certification**

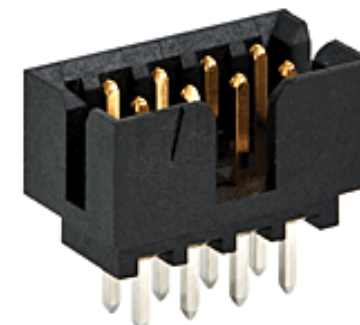
CSA	LR19980
UL	E29179

**General**

Product Family	PCB Headers
Series	<a href="#">87831</a>
Application	Signal, Wire-to-Board
Comments	Contact Molex for application in automotive industry
Overview	<a href="#">Milli-Grid Connector System</a>
Product Name	Milli-Grid
UPC	822348332670

**Physical**

Breakaway	No
Circuits (Loaded)	28
Circuits (maximum)	28
Color - Resin	Black
Durability (mating cycles max)	100
First Mate / Last Break	No
Flammability	94V-0
Glow-Wire Capable	No
Guide to Mating Part	No
Keying to Mating Part	None
Lock to Mating Part	Yes
Material - Metal	Phosphor Bronze
Material - Plating Mating	Gold
Material - Plating Termination	Tin
Material - Resin	Nylon
Net Weight	1.313/g
Number of Rows	2
Orientation	Vertical
PC Tail Length	2.50mm
PCB Locator	No
PCB Retention	None
PCB Thickness - Recommended	1.60mm
Packaging Type	Tube
Pitch - Mating Interface	2.00mm
Pitch - Termination Interface	2.00mm
Plating min - Mating	0.381µm
Plating min - Termination	1.905µm
Polarized to PCB	No
Shrouded	Yes
Stackable	No



*Series image - Reference only*

**EU ELV**

**Not Relevant**

**EU RoHS**

**Not Reviewed**

**REACH SVHC**

Not Contained Per -  
ED/30/2017 (7 July  
2017)

**Halogen-Free**

**Status**

**Not Low-Halogen**

For more information, please visit [Contact US](#)

China ROHS

Not Relevant

ELV

Not Relevant

RoHS Phthalates

Not Contained

**Search Parts in this Series**

[87831 Series](#)

**Mates With**

Milli-Grid Vertical Through Hole Receptacle [79107](#) , [78787](#) , Milli-Grid Flex-to-Board Vertical Receptacle [79108](#) , Milli-Grid Vertical Surface Mount Receptacle [79109](#) , [78788](#) , Milli-Grid Crimp Housing [51110](#) , Milli-Grid Cable-to-Board Receptacle [87568](#)

Surface Mount Compatible (SMC)	Yes
Temperature Range - Operating	-55° to +105°C
Termination Interface: Style	Through Hole

**Electrical**

Current - Maximum per Contact	2.0A
Voltage - Maximum	125V

**Material Info****Reference - Drawing Numbers**

Application Specification	503940001-AS-000
Packaging Specification	PK-87831-001-001
Product Specification	PS-87831-027-001
Sales Drawing	SD-87831-0001-001

This document was generated on 05/22/2020

**PLEASE CHECK [WWW.MOLEX.COM](http://WWW.MOLEX.COM) FOR LATEST PART INFORMATION**