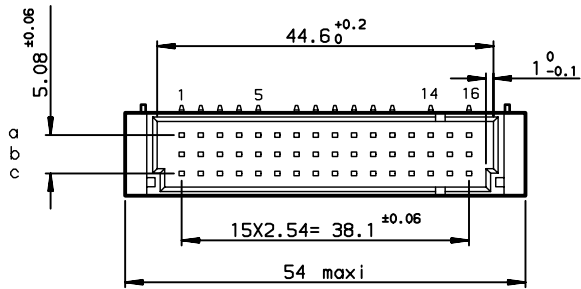
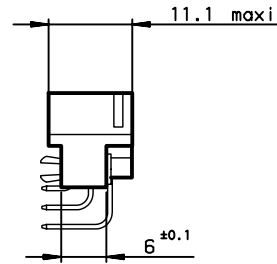
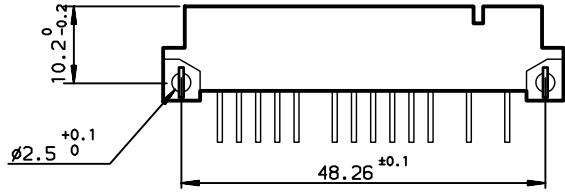
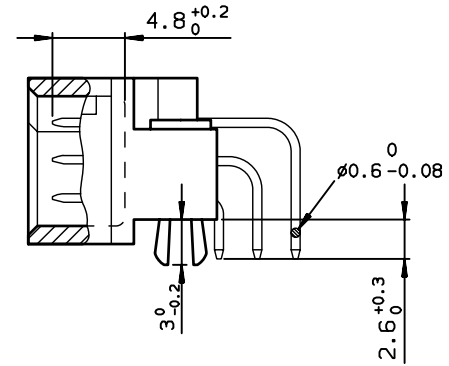


DIMENSIONS



TERMINATION



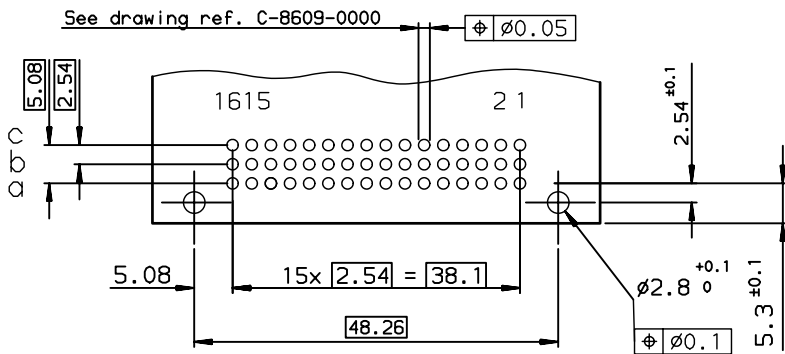
TIN LEAD PART NUMBER

PART NUMBER
86093397313H50867E1

LEAD FREE PART NUMBER

PART NUMBER
86093397313H50BYLF

P.C. CARD DRILLING (Component side view)



SPECIFICATION 867 = no contacts in position ;
OR SPECIFICATION BY =row : a-b-c cavity : 6-13-15

GENERAL CHARACTERISTICS AND ROHS INFORMATIONS:
SEE DRAWING C-8609-0000A

European Views

www.fciconnect.com		surface ISO 1302 ✓	tolerance std ISO 406 ISO 1101	projection mm
TOLERANCES UNLESS OTHERWISE SPECIFIED				
ANGULAR	LINEAR	0.X	±0.1	size A3
0.XX	±2'	0.XX	±0.1	Scale 1.5
0.XXX		0.XXX	±0.1	ECN LS08-0036
Dr	ROUILLARD	2001/11/16	Product family	DIN 8609
Eng	TARON	2001/11/16	Spec ref	-
Chr	LEGARE	2001/11/16		
Appr	LEGARE	2001/11/16		
rev	ecn no	dr	date	
A	-	ROU	2001/11/20	
B	LS05-001	JTA	2005/03/01	
C	LS05-0101	LGO	2006/06/28	
D	LS06-0095	LGO	2006/06/28	
E	LS08-0036	HLE	2008/01/31	
title STANDARD MALE 3 ROW C/2		dwg no C-8609-1106		Rev. E
39 CONTACTS		CUSTOMER		sheet 1 of 1
catalog no				

Copyright FCJ.