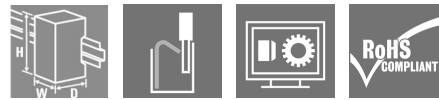


**WAVESERIES
WAZ5 PRO RTD**

Weidmüller Interface GmbH & Co. KG
 Klingenbergstraße 16
 D-32758 Detmold
 Germany
 Fon: +49 5231 14-0
 Fax: +49 5231 14-292083
 www.weidmueller.com

Do not use product for new developments



When used for industrial monitoring applications, sensors can record ambience conditions. Sensor signals are used within the process to continually track changes to the area being monitored. Both digital and analogue signals can occur.

Normally an electrical voltage or current value is produced which corresponds proportionally to the physical variables that are being monitored. Analogue signal processing is required when automation processes have to constantly maintain or reach defined conditions. This is particularly significant for process automation applications. Standardised electrical signals are typically used for process engineering. Analogue standardised currents / voltage 0(4)...20 mA/ 0...10 V have established themselves as physical measurement and control variables.

Weidmüller meets the ever increasing challenges of automation and offers a product portfolio tailored to the requirements of handling sensor signals in analogue signal processing

The analogue signal processing products can be used universally in combination with other Weidmüller products and in combination among each other. Their

electrical and mechanical design is such that they require only minimal wiring efforts.

Housing types and wire-connection methods matched to the respective application facilitate the universal use in process and industrial automation applications.

The product line includes the following functions:

- Isolating transformers, supply isolators and signal converters for DC standard signals
- Temperature measuring transducers for resistance thermometers and thermocouples,

General ordering data

- frequency converters,
- potentiometer-measuring transducers,
- bridge measuring transducers (strain gauges)
- trip amplifiers and modules for monitoring electrical
- and non-electrical process variables
- AD/DA converters
- displays
- calibration devices

The products mentioned are available as pure signal converters / isolation transducers, 2-way/3-way isolators, supply isolators, passive isolators or as trip amplifiers.

**WAVESERIES
WAZ5 PRO RTD**

Weidmüller Interface GmbH & Co. KG
 Klingenbergstraße 16
 D-32758 Detmold
 Germany
 Fon: +49 5231 14-0
 Fax: +49 5231 14-292083
 www.weidmueller.com

Technical data**Dimensions and weights**

Length	92.4 mm	Length (inches)	3.638 inch
Width	17.5 mm	Width (inches)	0.689 inch
Depth	112.4 mm	Depth (inches)	4.425 inch
Weight	100 g	Net weight	140 g

Temperatures

Operating temperature, max.	55 °C	Operating temperature, min.	0 °C
Storage temperature, max.	85 °C	Storage temperature, min.	-20 °C
Operating temperature	0 °C...55 °C	Storage temperature	-20 °C...85 °C

Probability of failure

MTTF	270 Jahre
------	-----------

Input

Number of inputs	1	Sensor	PT100/2-/3-/4-wire, Ni100/2-/3-/4-wire, potentiometer: min. 0– 100 Ω, max. 0–100 kΩ, resistance: 0–450 Ω
Line resistance in measuring circuit	50 Ω for 3- and 4- conductor	Temperature input range	Configurable, PT100: -200°C...850 °C, NI100: -60°C...+250 °C

Output

Number of outputs	1	Output voltage, note	0...10 V
Output current	0...20 mA, 4...20 mA	Wire break detection	LED flashing (output value: > 20 mA, >10 V)
Fine adjustment	± 5 %, Version 1 and later: ≥ 12.5 % / potentiometer: 12.5%...25%	load impedance voltage	≥ 1 kΩ
load impedance current	≤ 600 Ω	Offset voltage	max. 0.05 V
Offset current	max. 100 μA	Status indicator	Module active: LED on/ wire breakage: LED flashing/ Error: LED off

General data

Accuracy	< 0.3 % of measured value	Configuration	DIP switch, Potentiometer
Current-carrying capacity of cross- connect.	≤ 2 A	Galvanic isolation	3-way isolator
Input/Output	configurable	Linearity	Yes
Mounting rail	TS 35	Power consumption	830...880...980mW at I _{OUT} = 20 mA
Step response time	fast/slow: 2-/3-/4- conductor: 1.2 s/2.2 s; potentiometer: 0.5 s/1.1 s	Supply voltage	24 V DC ± 20 %
Temperature coefficient	Measuring range ≥ 200 K: ≤ 200 ppm/K 100 K ≤ measuring range < 200 K: ≤ 250 ppm/K 40 K ≤ measuring range < 100 K: ≤ 400 ppm/K		

Creation date April 8, 2018 10:05:17 AM CEST

Catalogue status 03.04.2018 / We reserve the right to make technical changes.

2

**WAVESERIES
WAZ5 PRO RTD**

Weidmüller Interface GmbH & Co. KG
 Klingenbergstraße 16
 D-32758 Detmold
 Germany
 Fon: +49 5231 14-0
 Fax: +49 5231 14-292083
 www.weidmueller.com

Technical data**Insulation coordination**

Clearance & creepage distances	≥ 3 mm	EMC standards	EN 55011, EN 61000-6
Galvanic isolation	3-way isolator	Impulse withstand voltage	4 kV
Insulation voltage	2 kV _{eff} / 5 s	Insulation voltage input or output/rail	4 kV _{eff} / 1 min.
Insulation voltage input or output/supply	2 kV _{eff} / 5 s	Pollution severity	2
Rated voltage	300 V	Standards	DIN EN 50178, DIN EN 61000-4-2
Surge voltage category	III		

Connection data

Type of connection	Tension clamp connection	Stripping length, rated connection	7 mm
Clamping range, rated connection	1.5 mm ²	Clamping range, min.	0.5 mm ²
Clamping range, max.	2.5 mm ²		

Classifications

ETIM 3.0	EC001774	ETIM 4.0	EC001774
ETIM 5.0	EC001774	ETIM 6.0	EC002919
UNSPSC	30-21-18-01	eClass 5.1	27-21-01-07
eClass 6.2	27-21-01-07	eClass 7.1	27-21-01-07
eClass 8.1	27-21-01-07	eClass 9.0	27-21-01-07
eClass 9.1	27-21-01-29		

Product information

Product information	This product will soon be replaced by a new product. Please do not use with new systems. Please contact our technical support.
Descriptive text accessories	Cross-connector for power supplies and markers – refer to Accessories

Approvals

Approvals



ROHS Conform

Downloads

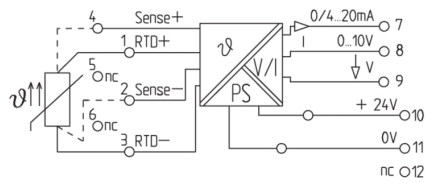
Approval/Certificate/Document of Conformity	Declaration of Conformity
Brochure/Catalogue	CAT 4.1 ELECTR 16/17 EN
Engineering Data	EPLAN_WSCAD
Software	WaveTool.zip
User Documentation	Instruction sheet

**WAVESERIES
WAZ5 PRO RTD**

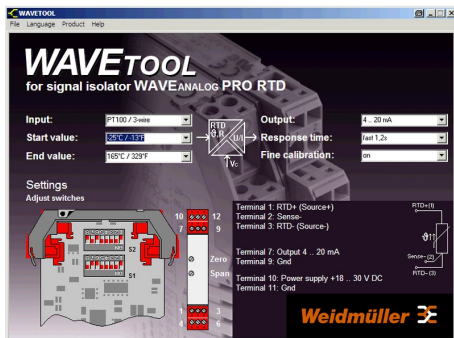
Weidmüller Interface GmbH & Co. KG
 Klingenbergstraße 16
 D-32758 Detmold
 Germany
 Fon: +49 5231 14-0
 Fax: +49 5231 14-292083
 www.weidmueller.com

Drawings

Electric symbol



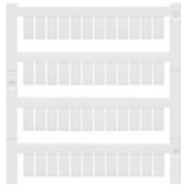
Similar to illustration



Screenshot example, Wave tool software

**WAVESERIES
WAZ5 PRO RTD**

Weidmüller Interface GmbH & Co. KG
 Klingenbergstraße 16
 D-32758 Detmold
 Germany
 Fon: +49 5231 14-0
 Fax: +49 5231 14-292083
 www.weidmueller.com

Accessories
Blank


WS markers are the perfect match for the W-series connectors. Thanks to their system compatibility, the WS tags can also be used with the I-series and the Z-series. The large marking surfaces do not only permit long character strings but also multi-line text. WS markers are ideal for labels with long, customised character strings. Thanks to the proven MultiCard format, printing with laser printer, PrintJet ADVANCED, plotter or MC-Mobilo is possible.

- Can be fitted in strips or individually
- Markers in proven MultiCard format

General ordering data

Type	Order No.	Version	GTIN (EAN)	Qty.
WS 10/5 MC	1635000000	WS, Terminal marker, 10 x	4008190261948	720 pc(s).
NE WS		5 mm, Pitch in mm (P): 5.00 Weidmueller, Allen-Bradley, White		

ZQV 2.5N


Spring connection with tension clamp Technology
 Tension clamp technology is a universal contact system for all common conductor connection types. Its fantastic level of flexibility makes the tension clamp a profitable alternative connection.

General ordering data

Type	Order No.	Version	GTIN (EAN)	Qty.
ZQV 2.5N/2 SW	1718080000	Accessories, Cross- connector, 24 A	4008190349301	60 pc(s).
ZQV 2.5N/2 RT	1717900000	Accessories, Z-series, Cross- connector, 24 A	4008190349288	60 pc(s).
ZQV 2.5N/2 BL	1717990000	Accessories, Cross- connector, 24 A	4008190349295	60 pc(s).
ZQV 2.5N/2 GE	1693800000	Z-series, Cross-connector, 24 A	4008190883621	60 pc(s).