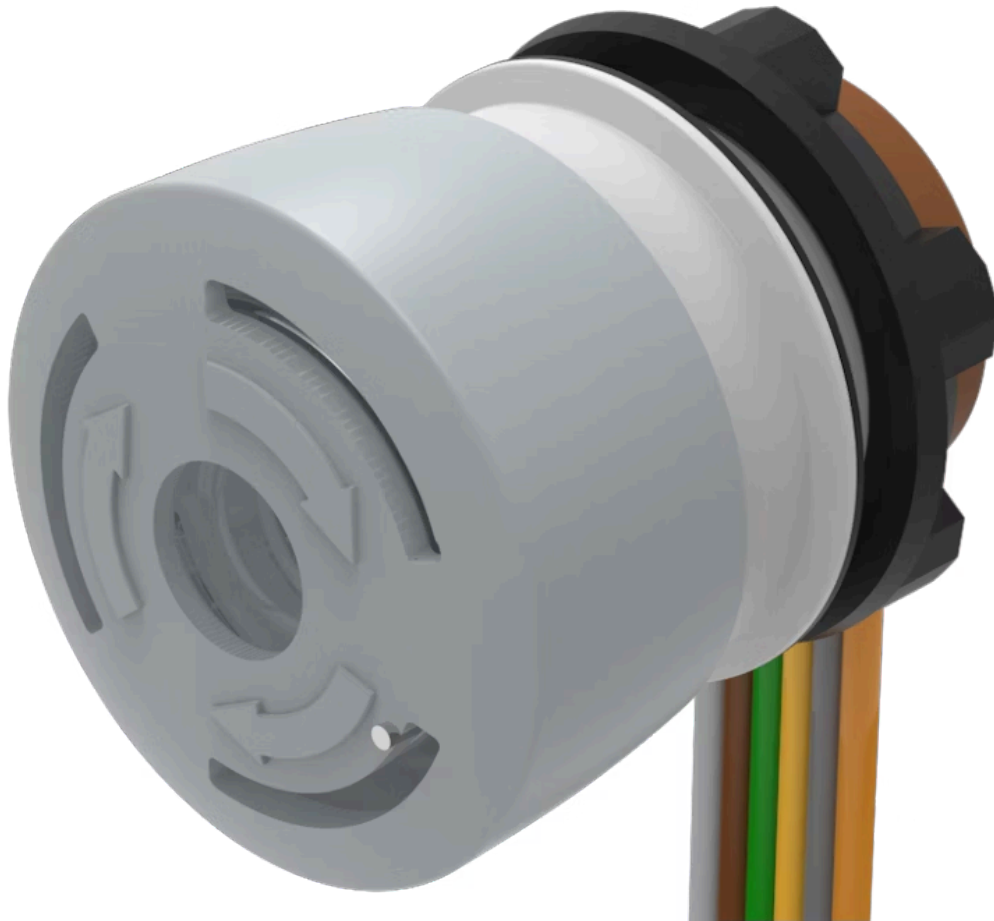


Stop switch

84-6841.2B40



<https://eao.com/p/84-6841.2B40>

Your product:



84-6841.2B40 Stop switch

FRONT

Front dimension: Ø 32 mm

OPERATING-/INDICATION PART

Lens colour: Grey

Lens shape: mushroom-head

Lens material: Plastic

Lens optics: opaque

Illumination colour: Red

ELECTRICAL CHARACTERISTICS

Operating voltage: 5 - 30,00 V DC (LED)

Contacts: 2 NC

Electrical lifetime: 50 000 cycles of operation

Pollution degree: 3, according to EN IEC 60947-1

Switching voltage and switching current:	Switch rating AC with silver contact (gold plated)		
	Service category AC-15 as per EN IEC 60947-5-1		
	Voltage	120 VAC	240
	Current	3 A	1,5
	Switch rating AC with silver contact (gold plated)		
	Service category DC-13 as per EN IEC 60947-5-1		
	NO contacts	NC contacts	NO
	(48 VA)	(60 VA)	
	12 VDC/2.0 A	12 VDC/2.5 A	12.5
	24 VDC/2.0 A	24 VDC/2.5 A	25.0
	48 VDC/1.0 A	48 VDC/1.25 A	
	60 VDC/0.8 A	60 VDC/1.0 A	

Standards: According to EN 60947-5-1, EN 60947-5-5, DIN EN ISO 13850, EN IEC 60204

Thermal current Ith: 5 A

Electric strength:

500 VAC, 50 Hz, 1 minute according to DIN IEC 60512-2

Overvoltage category:	II, according to EN / IEC 61058-1
Protection class:	II, according to EN / IEC 60947-5
Rated impulse withstand voltage U_{imp}:	2.5 kV, according to EN / IEC 60947-1
Rated insulation voltage U_i:	250 V according to EN / IEC 60947-1
Rated Operational Voltage U_e:	250 VAC/DC according to EN IEC 60947-1
Rated short-circuit current caused:	1 000 A, type of short-circuit device 6 A gG (EN 60947-5-1)

MECHANICAL CHARACTERISTIC

Terminal:	Flat ribbon cable
Operating Travel:	ca. 4 mm
Weight:	0.036 kg
Contact material:	Gold
Switching action:	Maintained
Switching system:	Slow-make switching element
Release type:	Twist to unlock
Mechanical lifetime:	≥50 000 cycles of operation
Operating force:	22 N ±4 N
Tightening torque:	Fixing nut 0.8 Nm

AMBIENT CONDITION

Shock resistance:	Max. 150 m / s ² , pulse width 11 ms, 3-axis, (semi-sinusoidal as per EN IEC 60068-2-27)
IP Protection:	IP20 rear side
Operating temperature:	- 25 °C ... + 65 °C
Storage temperature:	- 25 °C ... + 85 °C
Climate resistance:	Damp heat, cyclic: 96 hours, + 25 °C/97 %, + 55 °C/93 % relative humidity, as per EN IEC 60068-2-30 Damp heat, steady: 56 days, + 40 °C/93 % relative humidity, according to EN IEC 60068-2-78 Dry heat: 96 hours, + 65 °C, as per EN IEC 60068-2-2 Low temperature: 96 hours, - 25 °C (as per EN IEC 60068-2-1)) UV test, 56 days (EN 60068-2-5;1999) Saline mist: 96 hours, + 35 °C in chemical solution NaCl, as per EN IEC 60068-2-11
IP front protection:	IP65, according to DIN EN 60529

Vibration resistance: Max. 50 m / s² from 10 Hz ... 500 Hz, 10 cycles, 3-axis (sinusoidal EN IEC 60068-2-6)

CERTIFICATE

Approbations: CCC, UL

Conformities: CE, UKCA, 2006 / 42 / EC (MD), 2011 / 65 / EC (RoHS)

OTHER

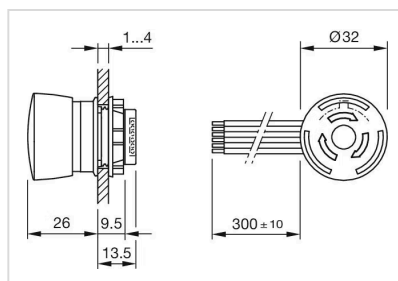
Housing colour: Grey

Housing material: Plastic

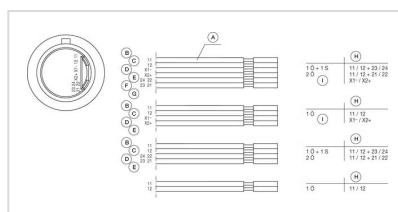
Short Description: Stop switch, Ø 32 mm, mushroom-head, Grey, Plastic, opaque, 2 NC, Maintained, Flat ribbon cable, IP65, according to DIN EN 60529, Twist to unlock, Red

Hints: Position indication ring black, Twist to unlock clockwise, Luminosity and wave length variations caused by LED manufacturing processes may cause slight differences regarding the illumination. The customer has to decide what resistor shall be used to the LED

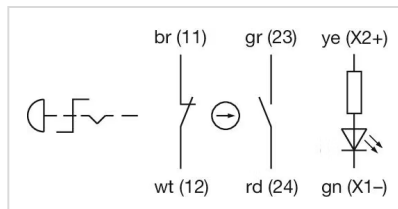
Dimension drawings:



Component layouts:



Wiring diagrams:



Mounting cut-outs:

