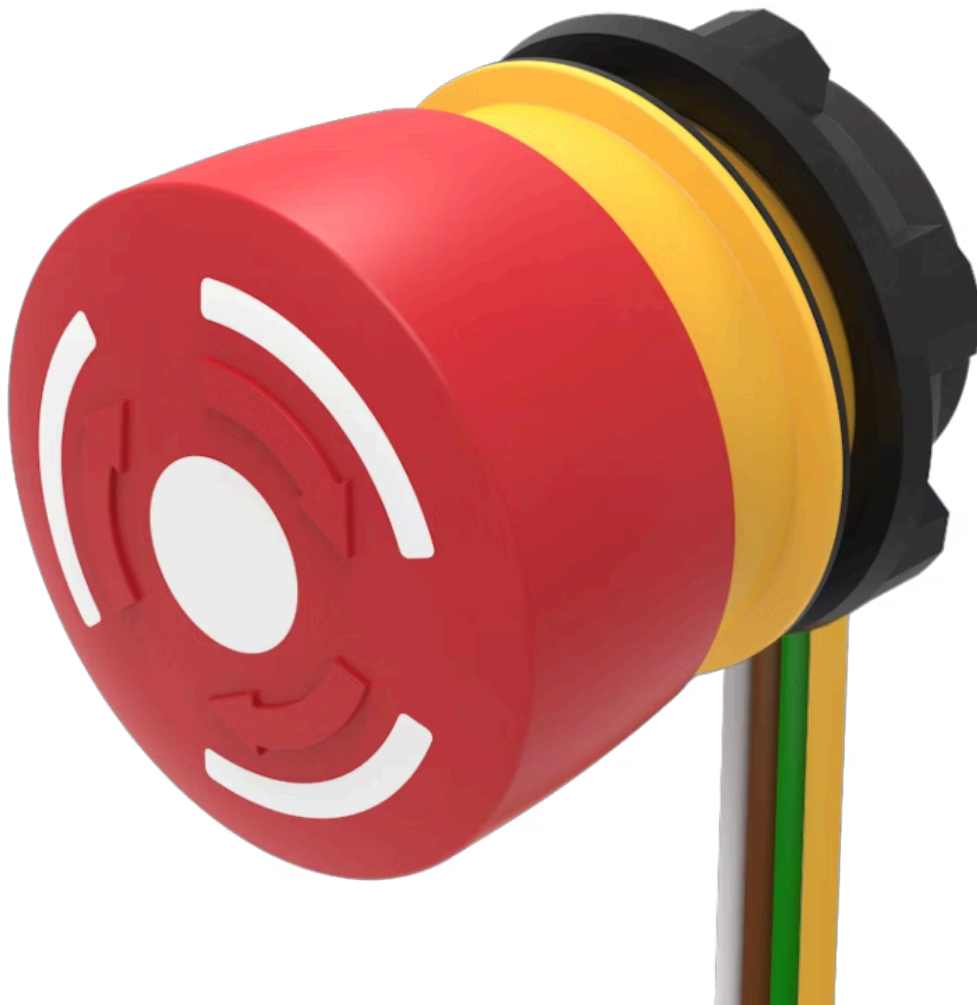


Emergency stop switch

84-5240.0040



<https://eao.com/p/84-5240.0040>

Your product:



84-5240.0040 Emergency stop switch

FRONT

Front dimension: Ø 32 mm

MOUNTING

Mounting cut-out: Ø 22.3 mm

OPERATING-/INDICATION PART

Lens colour: Red

Lens illumination: non illuminative

Lens material: Plastic, according to UL 94 V0

Lens optics: opaque

Lens shape: mushroom-head

Switching position ring: Black

ELECTRICAL CHARACTERISTICS

Overvoltage category: II, according to EN / IEC 61058-1

Electrical lifetime: 50 000 cycles of operation

Rated short-circuit current caused: 1 000 A, type of short-circuit device 6 A gG (EN 60947-5-1)

Rated insulation voltage U_i : 250 V according to EN / IEC 60947-1

Electric strength: 500 VAC, 50 Hz, 1 minute according to DIN IEC 60512-2

Thermal current I_{th} : 5 A

Contacts: 2 NC

Pollution degree: 3, according to EN IEC 60947-1

Standards:	According to EN 60947-5-1, EN 60947-5-5, DIN EN ISO 13850, EN IEC 60204		
Rated Operational Voltage Ue:	250 VAC/DC according to EN IEC 60947-1		
Rated impulse withstand voltage Uimp:	2.5 kV, according to EN / IEC 60947-1		
Switching voltage and switching current:	Switch rating AC with silver contact (gold plated) Service category AC-15 as per EN IEC 60947-5-1	Voltage Current	120 VAC 3 A
	Switch rating AC with silver contact (gold plated) Service category DC-13 as per EN IEC 60947-5-1		240 VAC 1,5 A
	NO contacts (48 VA)	NC contacts (60 VA)	NO
	12 VDC/2.0 A	12 VDC/2.5 A	12 A
	24 VDC/2.0 A	24 VDC/2.5 A	25 A
	48 VDC/1.0 A	48 VDC/1.25 A	
	60 VDC/0.8 A	60 VDC/1.0 A	
Protection class:	II, according to EN / IEC 60947-5		

MECHANICAL CHARACTERISTIC

Tightening torque:	Fixing nut 0.8 Nm
Contact material:	Gold
Operating Travel:	ca. 4 mm
Operating force:	17 N ± 4 N
Switching system:	Slow-make switching element
Mechanical lifetime:	250 000 cycles of operation
Release type:	Twist to unlock
Switching action:	Maintained
Weight:	0.036 kg
Terminal:	Flat ribbon cable 300 mm

AMBIENT CONDITION

Storage temperature:	- 25 °C ... + 85 °C
Climate resistance:	Damp heat, cyclic: 96 hours, + 25 °C/97 %, + 55 °C/93 % relative humidity, as per EN IEC 60068-2-30 Damp heat, steady: 56 days, + 40 °C/93 % relative humidity, according to EN IEC 60068-2-78 Dry heat: 96 hours, + 65 °C, as per EN IEC 60068-2-2 Low temperature: 96 hours, - 25 °C (as per EN IEC 60068-2-1)) UV test, 56 days (EN 60068-2-5:1999) Saline mist: 96 hours, + 35 °C in chemical solution NaCl, as per EN IEC 60068-2-11
IP Protection:	IP20 rear side, IP65 front side, according to IEC 60529, IP67 front side
Operating temperature:	- 25 °C ... + 70 °C

Vibration resistance: Max. 50 m / s² from 10 Hz ... 500 Hz, 10 cycles, 3-axis (sinusoidal EN IEC 60068-2-6)

Shock resistance: Max. 150 m / s², pulse width 11 ms, 3-axis, (semi-sinusoidal as per EN IEC 60068-2-27)

CERTIFICATE

Approbations: CCC, UL

Conformities: CE, UKCA, 2006 / 42 / EC (MD), 2011 / 65 / EC (RoHS)

OTHER

Hints: Twist to unlock clockwise, Foolproof according to EN IEC 60947-5-5, Lens colour Red

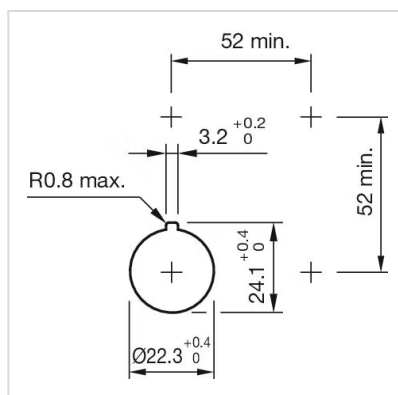
Short Description: Emergency stop switch, Ø 22.3 mm, Ø 32 mm, mushroom-head, non illuminative, Red, Plastic, according to UL 94 V0, opaque, 2 NC, Maintained, Flat ribbon cable 300 mm, Twist to unlock

Material: Plastic

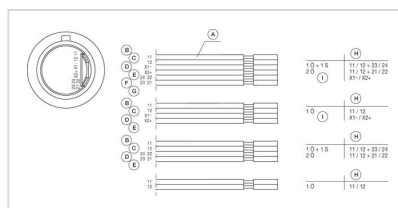
Housing material: Plastic, according to UL 94 V0

Housing colour: Yellow

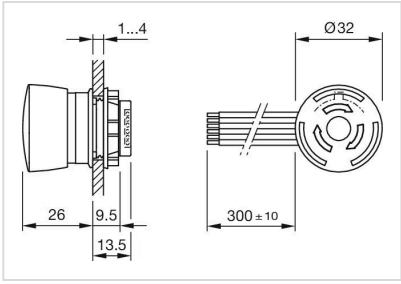
Mounting cut-outs:



Component layouts:



Dimension drawings:



Wiring diagrams:

