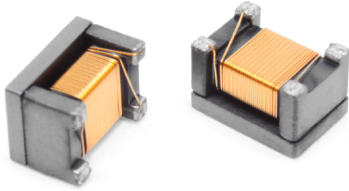


Automotive Chip Choke

EMI Suppression for CAN-Bus Networks

2-Line Common Mode Chokes

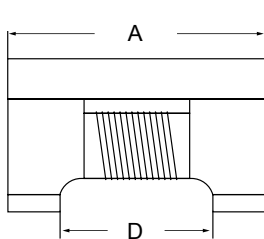


- Ⓜ Meets AEC-Q200 Requirements
- Ⓜ Suppression of common mode noise without attenuating the signal
- Ⓜ Magnetically shielded versions for lower Rdc and higher current
- Ⓜ Supports CAN-Bus, A2B and other IVN high speed differential signal lines (LVDS)

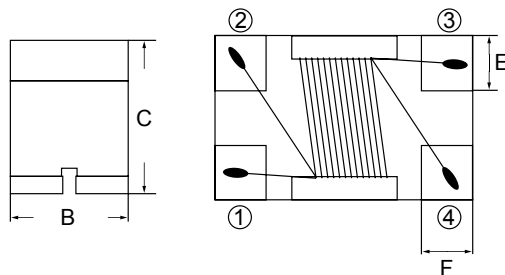
Electrical Specifications @ 25°C								
Part Number	Common Mode Impedance (10MHZ)		Inductance (uH)	Standard Tolerance	RDC (Ω Max)	IDC (A MAX)	Isolation Resistance (MΩ) Min	Rated Voltage (V) Max
	Min	Typ						
PE-1812ACCXXXSTS								

Mechanical

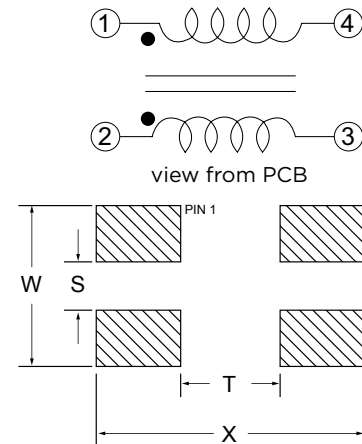
Schematic



All Units in mm



Bifilar winding
(representation only)



Component Dimensions (mm)							SOLDER PAD (mm)			
Series	A	B	C	D	E	F	X	T	W	S
1812 ACC	4.5 +/-0.20	3.2 +/-0.20	3.0 MAX	3.1 +/-0.20	0.65 +/-0.15	0.70 +/-0.15	5.90	3.20	3.40	1.60

Automotive Chip Choke

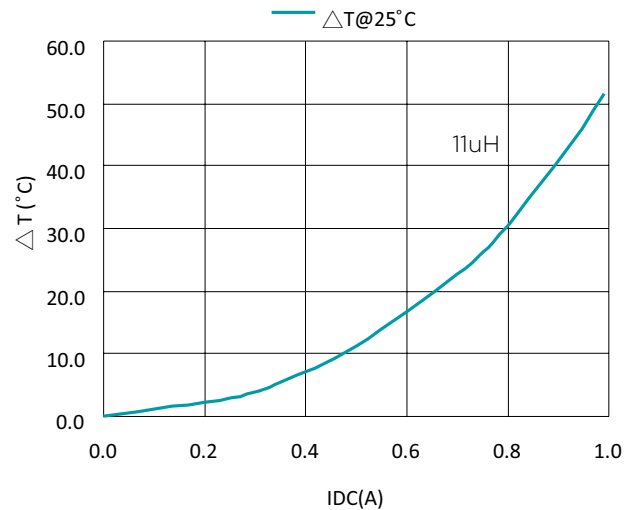
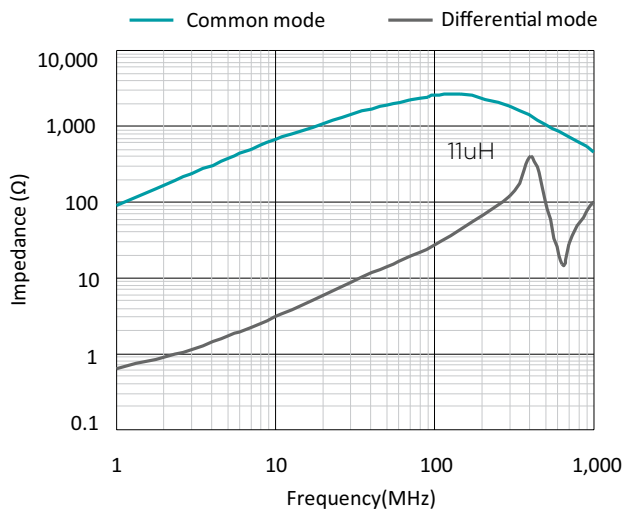
EMI Suppression for CAN-Bus Networks

2-Line Common Mode Chokes

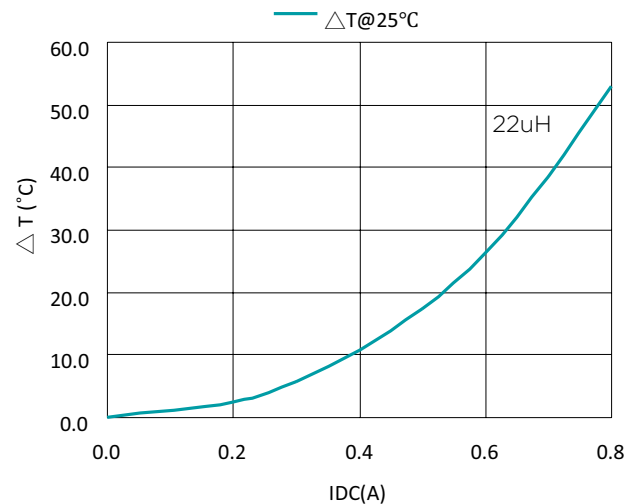
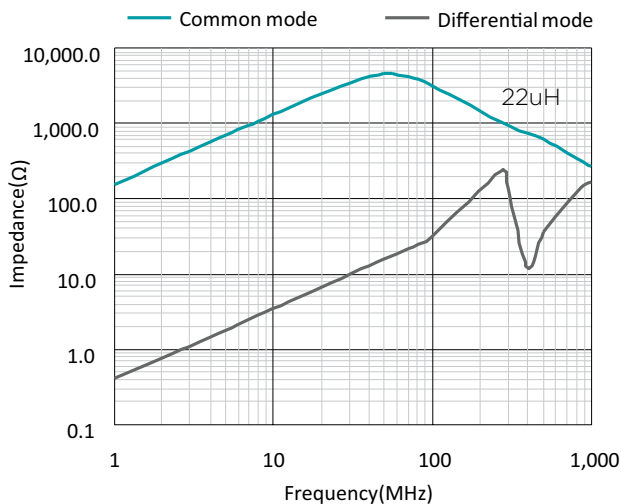
Impedance vs Frequency

Temp vs DC Current

PE-1812ACC110STS



PE-1812ACC220STS



Automotive Chip Choke

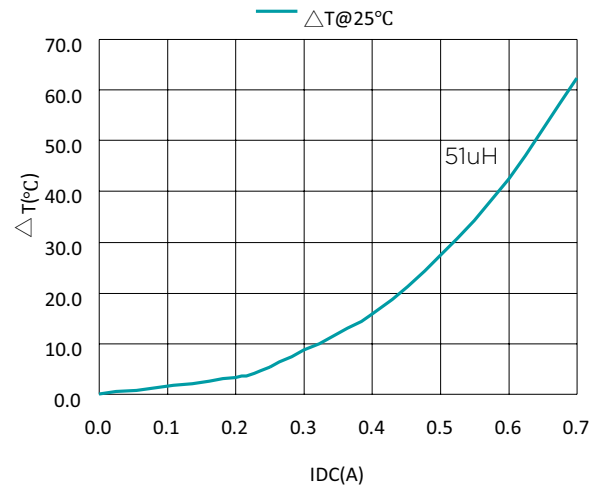
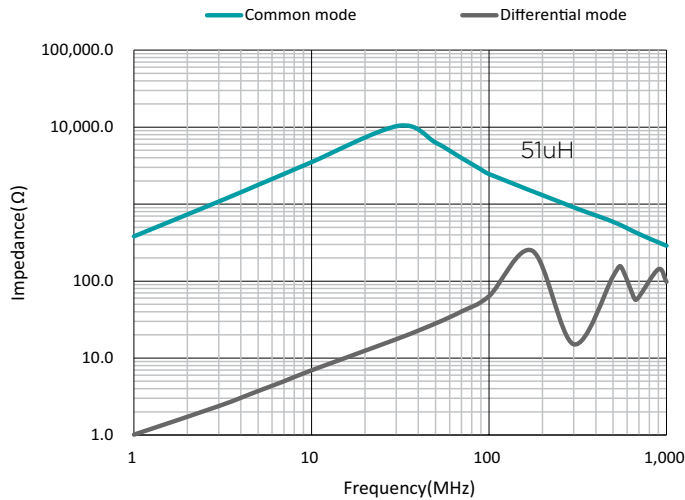
EMI Suppression for CAN-Bus Networks

2-Line Common Mode Chokes

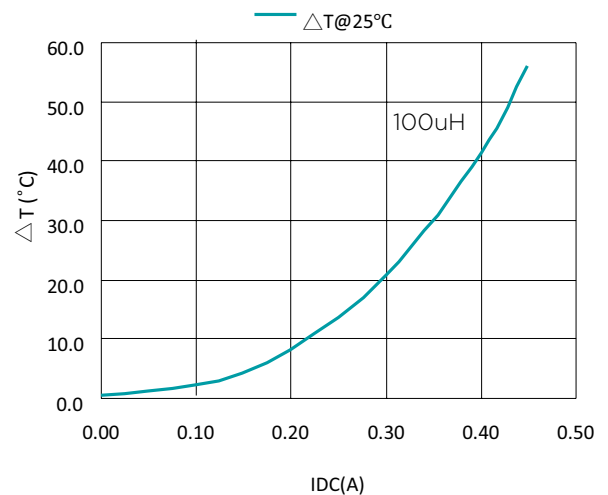
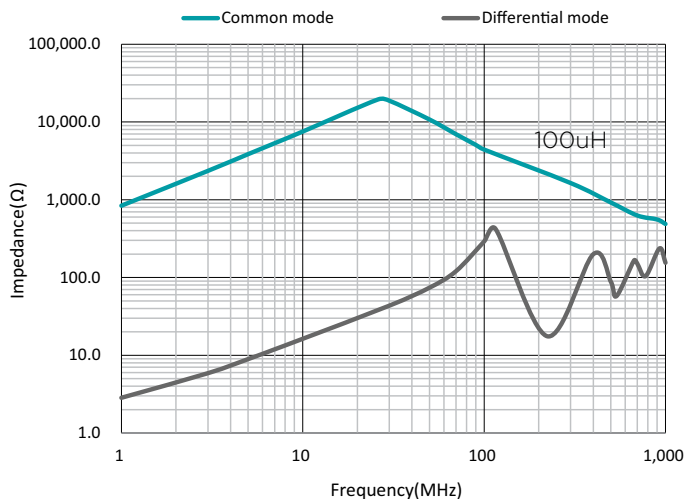
Impedance vs Frequency

Temp vs DC Current

PE-1812ACC510TS



PE-1812ACC101ST5



Automotive Chip Choke

EMI Suppression for CAN-Bus Networks

2-Line Common Mode Chokes

Reliability Test

Item	Reference documents	Test Condition	Test Specification
1. High Temperature Exposure	MIL-STD-202 Method 108	1. Temperature: 125 °C 2. Time: 1000 hours	1. No mechanical and electrical damage 2. Inductance shall be within specification
2. Temperature Cycling	JESD22 Method JA-104	1. Temperature: -40 °C~125 °C 2. Number of cycles: 1000 cycle 3. Dwell time: 30 minutes	1. No mechanical and electrical damage 2. Inductance shall be within specification
3. Biased Humidity Test	MIL-STD-202 Method 103	1. Temperature: 85±5 °C 2. Time: 1000 hours 3. Humidity: 85±5% RH	1. No mechanical and electrical damage 2. Inductance shall be within specification
4. Operational Life	MIL-PRF-27	1. Temperature: 125 °C 2. Time: 1000 hours 3. Apply DC current reference	1. No mechanical and electrical damage 2. Inductance shall be within specification
5. External Visual	MIL-STD-883 Method 2009	Inspect product construction, marking and workmanship	Per product specification standard
6. Physical Dimensions	JESD22 Method JB-100	Verify physical dimensions to the applicable product detail specification	Per product specification standard
7. Vibration Test	MIL-STD-202 Method 204	1. Frequency and Amplified: 10-2000-10 Hz, 1.5mm 2. Direction: X, Y, Z 3. Test duration: 2 hours for each direction, 6 hours in total	1. No mechanical and electrical damage 2. Inductance shall be within specification
8. Resistance to Soldering Heat Test	MIL-STD-202 Method 210	1. Temperature: 250±5 °C 2. Time: (temp. ≥ 217 °C) 60-160 seconds 3. IR reflow times: 3 times	1. No mechanical and electrical damage 2. Inductance shall be within specification
9. Solderability Test	J-STD-002	1. Bakeing in pre-testing: 150±5 °C / 16Hours±30min. 2. Peak temperature: 245 °C 3. Time: (temp. ≥ 217 °C) 60-160 seconds 4. IR reflow times: 1 time	The terminal shall be at least 95% covered with fresh solder.
10. Electrical Characterization	User Spec.	1. Operating temperature: -40 °C~125 °C 2. Room Temperature: 25 °C	1. No mechanical and electrical damage 2. Inductance shall be within specification
11. Mechanical Shock	MIL-STD-202 Method 213	Figure 1 of Method 213. Condition C	1. No mechanical and electrical damage 2. Inductance shall be within specification
12. Board Flex Test	AEC-Q200-005	60 Seconds minimum holding time	After test, inductors shall be no mechanical damage.
13. Terminal Strength Test	AEC-Q200-006	1. Apply push force to samples mounted on PCB. 2. Force of 1.8 kg for 60±1 seconds.	After test, inductors shall be no mechanical damage.

Notes:

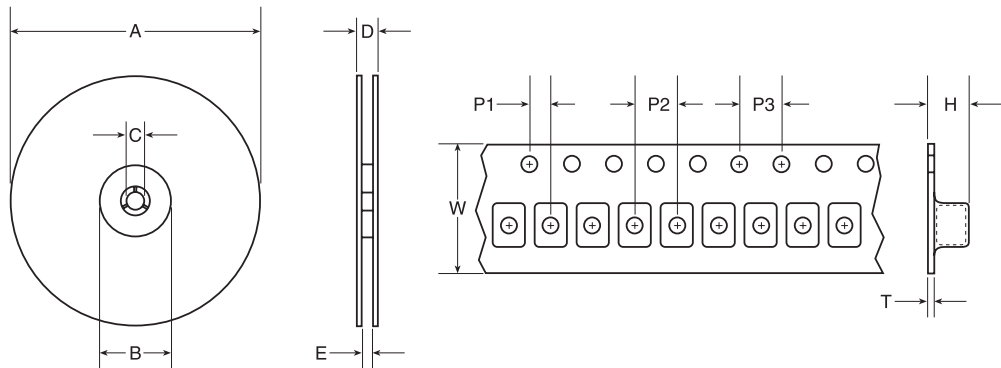
1. Inductance is measure, where applicable, with both primary windings connected in series (2 to 5, with 3 and 4 shorted).
2. Leakage inductance is measured with both primary windings connected in series (where applicable) with all other windings shorted.

Automotive Chip Choke

EMI Suppression for CAN-Bus Networks

2-Line Common Mode Chokes

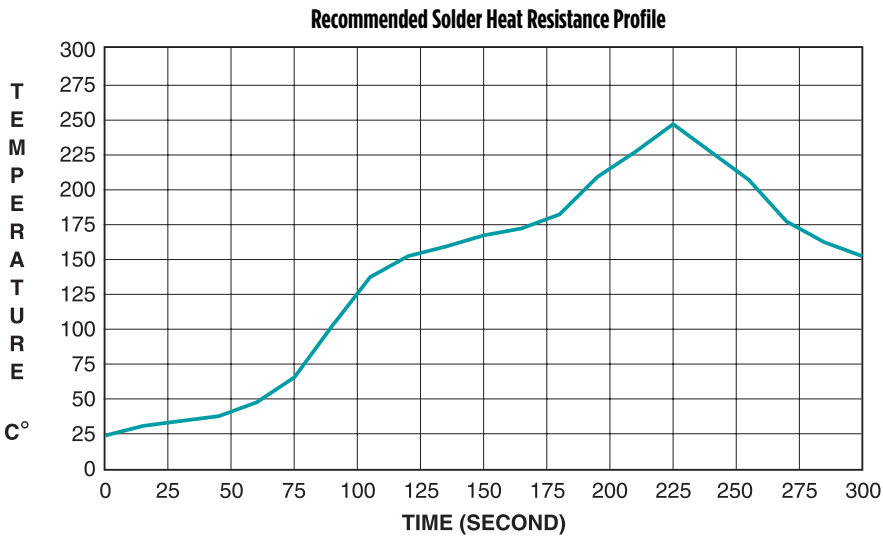
Tape and Reel Specifications



Reel Dimensions (mm)							Tape Dimensions (mm)					
Series	Parts per Reel	A	B	C	D	E	W	P1	P2	P3	H	T
1812 ACC	500	178	60	13	17	14	12	2	8	4	4	0.35

- I. Description:**
- a. Ferrite drum core construction
 - b. Magnetically shielded
 - c. Enameled copper wire: H class
 - d. Product weight: 0.15g (ref.)
 - e. Moisture sensitivity Level 1
 - f. Products comply with RoHS' requirements
 - g. Halogen Free available

- II. General specification:**
- a. Storage temp: -40°C to +125°C
 - b. Operating temp: -40°C to +125°C (Temp. rise included)
 - c. Resistance to solder heat: 250°C 10 secs.



For More Information:
Americas - prodinfo_network_americas@yageo.com | Europe - prodinfo_network_emea@yageo.com | Asia - prodinfo_network_asia@yageo.com

Performance warranty of products offered on this data sheet is limited to the parameters specified. Data is subject to change without notice. Other brand and product names mentioned herein may be trademarks or registered trademarks of their respective owners. © Copyright, 2024. Pulse Electronics, Inc. All rights reserved.

YAGEO Corporation and its affiliates do not recommend the use of commercial or automotive grade products for high reliability applications or manned space flight.