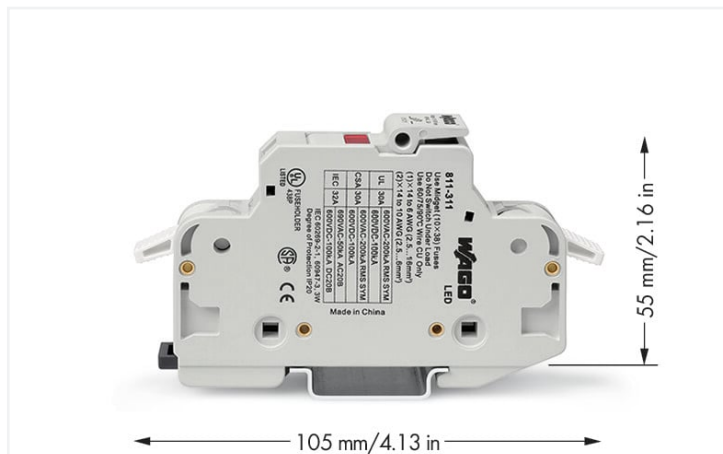


# Data Sheet | Item Number: 811-311

2-conductor fuse holder ; for cylindrical fuses 10 x 38 mm; 13/32" x 11/2"; 1-pole; with blown fuse indication; 600 VAC/VDC; for DIN-rail 35 x 15 and 35 x 7.5; 16 mm<sup>2</sup>; CAGE CLAMP®; 16,00 mm<sup>2</sup>; light gray



<https://www.wago.com/811-311>



Color: ■ light gray

## Notes

**Safety Information** The fuse holder must not be opened under load.

## Electrical data

Ratings per	IEC/HD 60269-2		
Overtoltage category	III	III	II
Pollution degree	3	2	2
Nominal voltage	690 V	-	-
Rated surge voltage	-	-	-
Rated current	32 A	-	-

Ratings per IEC/EN – Notes	
Ratings (note)	Electrical ratings are specified in the technical data of both fuse terminal block and fuse. When selecting glass cartridge fuses, make sure that the listed power loss is not exceeded.

Ratings per IEC/EN 2	
Rated voltage (III/3) 2	1000 V

Approvals per	UL 4248-1		
Use group	B	C	D
Rated voltage	-	-	-

Approvals per	CSA 22.2		
Use group	B	C	D
Rated voltage	-	-	-

Power Loss	
Power loss P <sub>I</sub> max. overload and short-circuit protection (individual arrangement)	3 W
Power loss P <sub>I</sub> max. overload and short-circuit protection (group arrangement)	3 W
Power loss P <sub>I</sub> max. short-circuit protection (individual arrangement)	3 W
Power loss P <sub>I</sub> max. short-circuit protection (group arrangement)	3 W

## General information

Voltage type 1	AC
Voltage type 2	DC
Fuse receptacle	pluggable
Fuse type	Cylindrical fuse; 10 x 38 mm

### Connection data

Clamping units	2
Total number of potentials	1
Number of levels	1

### Connection 1

Connection technology	CAGE CLAMP®
Actuation type	Operating tool
Connectable conductor materials	Copper
Solid conductor	2.5 ... 16 mm <sup>2</sup> / 14 ... 6 AWG
Fine-stranded conductor	2.5 ... 16 mm <sup>2</sup> / 16 ... 6 AWG
Strip length	12 ... 13 mm / 0.47 ... 0.51 inches
Pole number	1
Wiring direction	Side-entry wiring

### Physical data

Width	17.5 mm / 0.689 inches
Height	105 mm / 4.134 inches
Depth from upper-edge of DIN-rail	55 mm / 2.165 inches

### Mechanical data

Mounting type	DIN-35 rail
Mounting (note)	The fixed foot of the fuse terminal block must face upwards so that the fuse cannot fall out.

### Material data

Note (material data)	<a href="#">Information on material specifications can be found here</a>
Color	light gray
Material group	I
Insulation material (main housing)	Polyamide (PA66)
Flammability class per UL94	V0
Fire load	0 MJ
Weight	1.1 g

### Environmental requirements

Processing temperature	-35 ... +85 °C
Continuous operating temperature	-35 ... +85 °C

### Commercial data

Product Group	1 (Rail Mounted Terminal Blocks)
eCl@ss 10.0	27-14-11-16
eCl@ss 9.0	27-14-11-16
ETIM 9.0	EC002705
ETIM 8.0	EC002705
PU (SPU)	12 (1) pcs
Packaging type	Box
Country of origin	CN
GTIN	4050821856498
Customs tariff number	85369095000



**Environmental Product Compliance**

RoHS Compliance Status	Compliant, No Exemption
------------------------	-------------------------

**Approvals / Certificates**

**Declarations of conformity and manufacturer's declarations**

Approval	Standard	Certificate Name
EU-Declaration of Conformity WAGO GmbH & Co. KG	-	-

**Downloads**

**Environmental Product Compliance**

Compliance Search	
Environmental Product Compliance 811-311	<a href="#">↓</a>

**Documentation**

Additional Information		
Technical Section	pdf 2246.92 KB	<a href="#">↓</a>

Bid Text				
811-311	19.02.2019	xml 3.90 KB	<a href="#">↓</a>	
811-311	14.03.2017	doc 26.50 KB	<a href="#">↓</a>	

**CAD/CAE-Data**

CAD data	
2D/3D Models 811-311	<a href="#">↓</a>

CAE data	
EPLAN Data Portal 811-311	<a href="#">↓</a>
WSCAD Universe 811-311	<a href="#">↓</a>
ZUKEN Portal 811-311	<a href="#">↓</a>

## 1 Compatible Products

### 1.1 Optional Accessories

#### 1.1.1 Ferrule

##### 1.1.1.1 Ferrule



**Item No.: 216-209**

Ferrule; Sleeve for 10 mm<sup>2</sup> / AWG 8; insulated; electro-tin plated; red



**Item No.: 216-109**

Ferrule; Sleeve for 10 mm<sup>2</sup> / AWG 8; uninsulated; electro-tin plated



**Item No.: 216-208**

Ferrule; Sleeve for 6 mm<sup>2</sup> / AWG 10; insulated; electro-tin plated; electrolytic copper; gastight crimped; acc. to DIN 46228, Part 4/09.90; yellow



**Item No.: 216-108**

Ferrule; Sleeve for 6 mm<sup>2</sup> / AWG 10; uninsulated; electro-tin plated; silver-colored



**Item No.: 216-545**

Twin ferrule only for 811 series; Sleeve for 2 x 2.5 mm / AWG 14; insulated; Nominal current 63 A; blue



**Item No.: 216-546**

Twin ferrule only for 811 series; Sleeve for 2 x 4 mm / AWG 12; insulated; Nominal current 63 A; gray



**Item No.: 216-547**

Twin ferrule only for 811 series; Sleeve for 2 x 6 mm / AWG 10; insulated; Nominal current 63 A; yellow

### 1.1.2 Installation

#### 1.1.2.1 Locking system



**Item No.: 811-612**

Coupling kit; for 12 poles; red

### 1.1.3 Jumper

#### 1.1.3.1 Jumper



**Item No.: 811-480**

Jumper; 10-way; insulated; light gray



**Item No.: 811-481**

Jumper; 11-way; insulated; light gray



**Item No.: 811-482**

Jumper; 12-way; insulated; light gray



**Item No.: 811-472**

Jumper; 2-way; insulated; light gray



**Item No.: 811-473**

Jumper; 3-way; insulated; light gray



**Item No.: 811-474**

Jumper; 4-way; insulated; light gray



**Item No.: 811-475**

Jumper; 5-way; insulated; light gray



**Item No.: 811-476**

Jumper; 6-way; insulated; light gray



**Item No.: 811-477**

Jumper; 7-way; insulated; light gray



**Item No.: 811-478**

Jumper; 8-way; insulated; light gray



**Item No.: 811-479**

Jumper; 9-way; insulated; light gray

### 1.1.4 Marking

#### 1.1.4.1 Label



**Item No.: 210-805**

Labels; for Smart Printer; permanent adhesive; 6 x 15 mm; white



**Item No.: 210-805/000-002**

Labels; for Smart Printer; permanent adhesive; 6 x 15 mm; yellow



**Item No.: 210-806**

Labels; for Smart Printer; permanent adhesive; 9 x 15 mm; white



**Item No.: 210-806/000-002**

Labels; for Smart Printer; permanent adhesive; 9 x 15 mm; yellow



**Item No.: 210-705**

Labels; for TP printers; permanent adhesive; 6 x 15 mm; white



**Item No.: 210-705/000-002**

Labels; for TP printers; permanent adhesive; 6 x 15 mm; yellow



**Item No.: 210-706**

Labels; for TP printers; permanent adhesive; 9 x 15 mm; white



**Item No.: 210-706/000-002**

Labels; for TP printers; permanent adhesive; 9 x 15 mm; yellow

1.1.4.2 Marker



**Item No.: 793-5501/000-006**

WMB marking card; as card; for terminal block width 5 - 17.5 mm; stretchable 5 - 5.2 mm; plain; snap-on type; blue

**Item No.: 793-5501/000-014**

WMB marking card; as card; for terminal block width 5 - 17.5 mm; stretchable 5 - 5.2 mm; plain; snap-on type; brown

**Item No.: 793-5501/000-007**

WMB marking card; as card; for terminal block width 5 - 17.5 mm; stretchable 5 - 5.2 mm; plain; snap-on type; gray

**Item No.: 793-5501/000-023**

WMB marking card; as card; for terminal block width 5 - 17.5 mm; stretchable 5 - 5.2 mm; plain; snap-on type; green



**Item No.: 793-5501/000-017**

WMB marking card; as card; for terminal block width 5 - 17.5 mm; stretchable 5 - 5.2 mm; plain; snap-on type; light green

**Item No.: 793-5501/000-012**

WMB marking card; as card; for terminal block width 5 - 17.5 mm; stretchable 5 - 5.2 mm; plain; snap-on type; orange

**Item No.: 793-5501/000-005**

WMB marking card; as card; for terminal block width 5 - 17.5 mm; stretchable 5 - 5.2 mm; plain; snap-on type; red

**Item No.: 793-5501/000-024**

WMB marking card; as card; for terminal block width 5 - 17.5 mm; stretchable 5 - 5.2 mm; plain; snap-on type; violet



**Item No.: 793-5501**

WMB marking card; as card; for terminal block width 5 - 17.5 mm; stretchable 5 - 5.2 mm; plain; snap-on type; white

**Item No.: 793-5501/000-002**

WMB marking card; as card; for terminal block width 5 - 17.5 mm; stretchable 5 - 5.2 mm; plain; snap-on type; yellow

**Item No.: 793-501/000-006**

WMB marking card; as card; not stretchable; plain; snap-on type; blue

**Item No.: 793-501/000-007**

WMB marking card; as card; not stretchable; plain; snap-on type; gray



**Item No.: 793-501/000-023**

WMB marking card; as card; not stretchable; plain; snap-on type; green

**Item No.: 793-501/000-017**

WMB marking card; as card; not stretchable; plain; snap-on type; light green

**Item No.: 793-501/000-012**

WMB marking card; as card; not stretchable; plain; snap-on type; orange

**Item No.: 793-501/000-005**

WMB marking card; as card; not stretchable; plain; snap-on type; red



**Item No.: 793-501/000-024**

WMB marking card; as card; not stretchable; plain; snap-on type; violet

**Item No.: 793-501**

WMB marking card; as card; not stretchable; plain; snap-on type; white

**Item No.: 793-501/000-002**

WMB marking card; as card; not stretchable; plain; snap-on type; yellow

**Item No.: 2009-115/000-006**

WMB-Inline; for Smart Printer; 1500 pieces on roll; stretchable 5 - 5.2 mm; plain; snap-on type; blue



**Item No.: 2009-115/000-007**

WMB-Inline; for Smart Printer; 1500 pieces on roll; stretchable 5 - 5.2 mm; plain; snap-on type; gray

**Item No.: 2009-115/000-023**

WMB-Inline; for Smart Printer; 1500 pieces on roll; stretchable 5 - 5.2 mm; plain; snap-on type; green

**Item No.: 2009-115/000-017**

WMB-Inline; for Smart Printer; 1500 pieces on roll; stretchable 5 - 5.2 mm; plain; snap-on type; light green

**Item No.: 2009-115/000-012**

WMB-Inline; for Smart Printer; 1500 pieces on roll; stretchable 5 - 5.2 mm; plain; snap-on type; orange



**Item No.: 2009-115/000-005**

WMB-Inline; for Smart Printer; 1500 pieces on roll; stretchable 5 - 5.2 mm; plain; snap-on type; red

**Item No.: 2009-115/000-024**

WMB-Inline; for Smart Printer; 1500 pieces on roll; stretchable 5 - 5.2 mm; plain; snap-on type; violet

**Item No.: 2009-115**

WMB-Inline; for Smart Printer; 1500 pieces on roll; stretchable 5 - 5.2 mm; plain; snap-on type; white

**Item No.: 2009-115/000-002**

WMB-Inline; for Smart Printer; 1500 pieces on roll; stretchable 5 - 5.2 mm; plain; snap-on type; yellow

1.1.4.3 Marker carrier



**Item No.: 285-442**

Adaptor; gray

1.1.5 Supply module

1.1.5.1 Supply module



**Item No.: 811-471**

Supply module; 35 mm<sup>2</sup>; for 811 Series Fuse Terminal Blocks; SCREW CLAMP CONNECTION; 35,00 mm<sup>2</sup>; light gray

## 1.1.6 Test and measurement

### 1.1.6.1 Testing accessories



**Item No.: 206-912**

WAGO Test Probes; 2 mm Ø; 1000 V; CAT IV; 10 A

## Installation Notes

### Installation



Creating a 2- or 3-pole fuse terminal block via coupling kit.

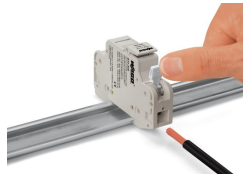


Removing a terminal block from the DIN-rail.

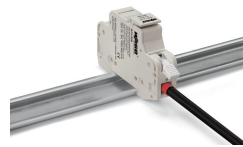
### Conductor termination



Open and close lever via operating tool.



**CAGE CLAMP® connection**  
Inserting a conductor.  
Opening the clamping unit via integrated lever.



Terminating ferruled conductors up to 10 mm<sup>2</sup> (8 AWG).

### Commoning



Jumper bar for quick and convenient commoning



Inserting a fuse.

Marking



WMB marker slot for convenient identification



Marker carriers (285-442) for continuous marking strips