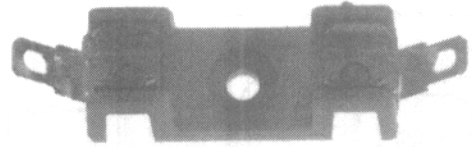


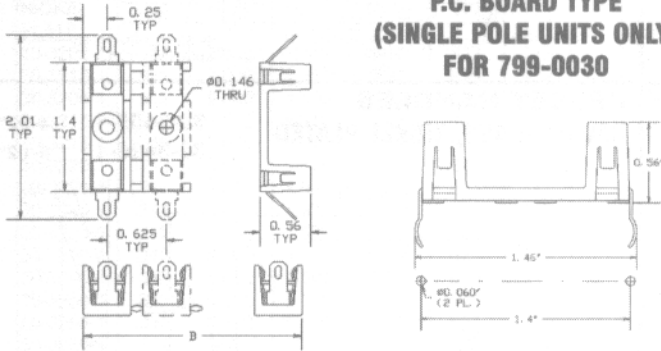
# FUSES BLOCKS

## MOLDED BASE SOLDER TYPE TERMINAL

- Gray Polyester glass reinforced base UL94VO flammability rating.
- Individual pole barriers for greater protection against clip damage and electrical shock.
- Minimum dielectric of 1500 volts RMS.
- Twelve pole units may be broken apart to obtain desired number of poles.
- Terminals, tin plated spring brass.
- Recognized under components program of underwriters labs and certified by CSA up to 300 V and @ current rating of 15 A.



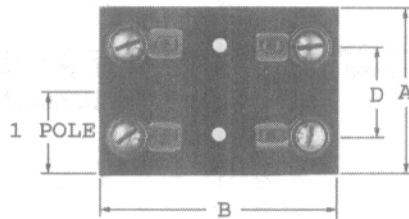
### P.C. BOARD TYPE (SINGLE POLE UNITS ONLY) FOR 799-0030



PART NO.	NO. OF POLES	DIMENSION B
799-0030	1	.50
799-0031	1	.50
799-0032	2	1.12
799-0033	3	1.75
799-0034	4	2.38
799-0035	5	3.00
799-0036	6	3.63
799-0037	7	4.25
799-0038	8	4.88
799-0039	9	5.50
799-0040	10	6.13
799-0041	11	6.75
799-0042	12	7.38

## LAMINATED BASE

WITH SCREW TERMINAL FOR 3AG FUSES  
 15 Amp - UL approved  
 Nickel plated spring brass clips  
 8-32 th'd screw type terminal  
 Black phenolic laminate base with UL94VO flammability rating Mtg hole .142/.147 dia. with .295/.302 x 82°C sink.

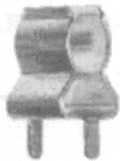


PART NO.	A	B	D	NO OF POLES
799-0051	.78	2.38	.91	1
799-0052	1.69	2.38	.91	2

BOARD THICKNESS .25  
 OVERALL HEIGHT .69

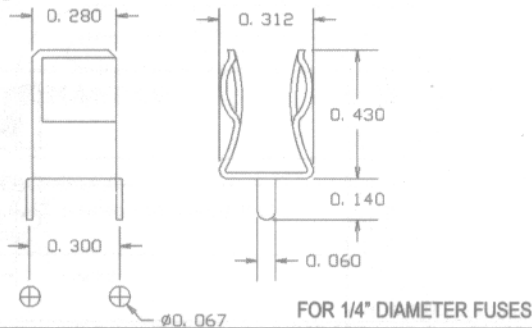
## FUSE CLIPS

### P.C. BOARD TYPE



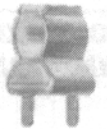
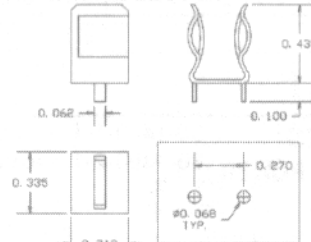
PART NO. STYLE  
 799-0061 EAR  
 799-0062 EARLESS  
 MATERIAL SPRING, BRASS TIN PLATED

EAR TYPE ONLY SHOWN



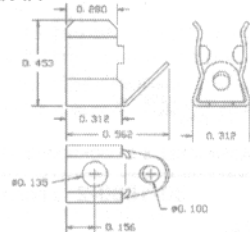
### P.C. TABS IN CENTER

### P/N 707-0830



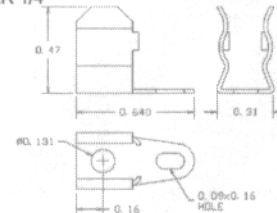
### 45° ANGLE TYPE P/N 799-0065

FUSE DIAMETER 1/4"



### STRAIGHT TYPE P/N 799-0066

FUSE DIAMETER 1/4"



## RIVET/EYELET MOUNT



PART NO. STYLE  
 799-0063 EAR  
 799-0064 EARLESS

EAR TYPE ONLY SHOWN

