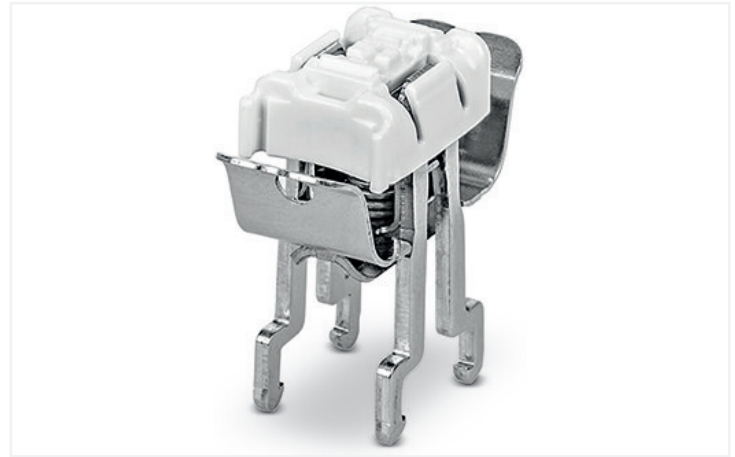
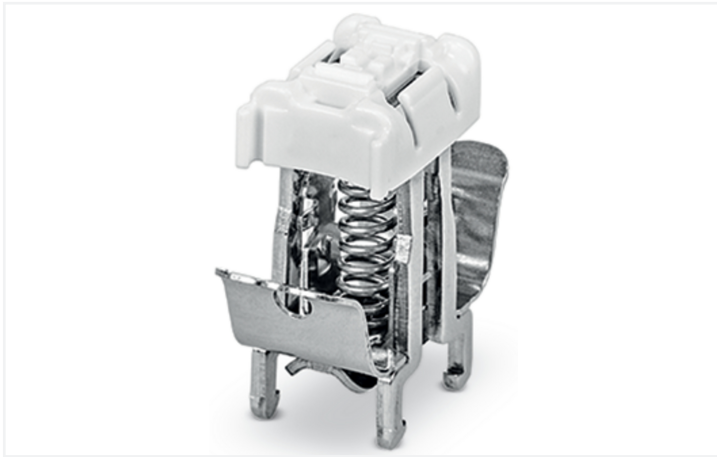


**Data Sheet | Item Number: 790-208**  
Shield clamping saddle; 12.4 mm wide; 3 ... 8 mm

<https://www.wago.com/790-208>



Color: ■ silver-colored

### Notes

Safety information

Cannot be used for connecting ground conductors and strain relief!

### Physical data

Width 12.4 mm / 0.488 inches

### Material data

Color	silver-colored
Fire load	0.02 MJ
Weight	8 g
Material	Steel V2A Stainless steel Polycarbonate

### Commercial data

Product Group	2 (Terminal Block Accessories)
eCl@ss 10.0	27-14-11-50
eCl@ss 9.0	27-14-11-50
ETIM 8.0	EC002020
ETIM 7.0	EC002020
PU (SPU)	50 pcs
Packaging type	Box
Country of origin	DE
GTIN	4017332942348
Customs tariff number	85369010000

**Environmental Product Compliance**

REACH Candidate List Substance	Perfluorobutane sulfonic acid (PFBS) and its salts
RoHS Compliance Status	Compliant, No Exemption
SCIP notification number (Austria)	5c7e398f-7c95-4e74-b6b4-056351afe9bc
SCIP notification number (Belgium)	0833b398-13fb-4513-8cd5-03728c65fdc5
SCIP notification number (Bulgaria)	8c66e8ff-d28b-4218-bd34-9aab420f5403
SCIP notification number (Czech Republic)	dad2df44-5262-47f8-be99-673011055e45
SCIP notification number (Denmark)	330f750b-2fc4-4f5c-bc09-6bd17fd8ea28
SCIP notification number (Finland)	ea662327-38be-46cc-8671-8a2c62cce4dc
SCIP notification number (France)	da074583-b20f-4c36-9946-b91753993df2
SCIP notification number (Germany)	dc0722f0-333e-462a-8c58-6a7a25ac30a0
SCIP notification number (Hungary)	f2ec6210-6d1a-4678-9eb6-b5d755ca4e2f
SCIP notification number (Italy)	c5681f6d-9a69-410a-ab4e-a775c7315e89
SCIP notification number (Netherlands)	7bfe8c00-1dab-4454-b648-d2fbf36be002
SCIP notification number (Poland)	bf58da7e-7ae7-4fbb-86dd-7fde9a5ea3a1
SCIP notification number (Romania)	bb734d54-2534-44c7-80e5-0621087350cd
SCIP notification number (Sweden)	938d11b8-354d-4cca-8677-2e4727ee289e

Processing temperature (min.)	-35 °C
Processing temperature (max.)	85 °C
Processing temperature	-35 ... +85 °C
Continuous operating temperature from	-60 °C
Continuous operating temperature up to	105 °C
Continuous operating temperature	-60 ... +105 °C

**Downloads**

**Environmental Product Compliance**

<b>Compliance Search</b>	
Environmental Product Compliance 790-208	<a href="#">↓</a>

**Documentation**

<b>Bid Text</b>			
790-208	19.02.2019	xml 2.69 KB	<a href="#">↓</a>
790-208	18.08.2017	doc 23.50 KB	<a href="#">↓</a>

CAD/CAE-Data

**CAD data**  
2D/3D Models 790-208

**CAE data**  
EPLAN Data Portal 790-208

ZUKEN Portal 790-208

1 Compatible Products

1.1 Optional Accessories

1.1.1 DIN-rail

1.1.1.1 Shield termination



**Item No.: 790-145**  
Carrier rail; with special perforations; 1000 mm long; tin-plated; silver-colored

1.1.2 Marking

1.1.2.1 Marker



**Item No.: 793-5501/000-006**  
WMB marking card; as card; for terminal block width 5 - 17.5 mm; stretchable 5 - 5.2 mm; plain; snap-on type; blue



**Item No.: 793-5501/000-014**  
WMB marking card; as card; for terminal block width 5 - 17.5 mm; stretchable 5 - 5.2 mm; plain; snap-on type; brown



**Item No.: 793-5501/000-007**  
WMB marking card; as card; for terminal block width 5 - 17.5 mm; stretchable 5 - 5.2 mm; plain; snap-on type; gray



**Item No.: 793-5501/000-023**  
WMB marking card; as card; for terminal block width 5 - 17.5 mm; stretchable 5 - 5.2 mm; plain; snap-on type; green



**Item No.: 793-5501/000-017**  
WMB marking card; as card; for terminal block width 5 - 17.5 mm; stretchable 5 - 5.2 mm; plain; snap-on type; light green



**Item No.: 793-5501/000-012**  
WMB marking card; as card; for terminal block width 5 - 17.5 mm; stretchable 5 - 5.2 mm; plain; snap-on type; orange



**Item No.: 793-5501/000-005**  
WMB marking card; as card; for terminal block width 5 - 17.5 mm; stretchable 5 - 5.2 mm; plain; snap-on type; red



**Item No.: 793-5501/000-024**  
WMB marking card; as card; for terminal block width 5 - 17.5 mm; stretchable 5 - 5.2 mm; plain; snap-on type; violet



**Item No.: 793-5501**  
WMB marking card; as card; for terminal block width 5 - 17.5 mm; stretchable 5 - 5.2 mm; plain; snap-on type; white



**Item No.: 793-5501/000-002**  
WMB marking card; as card; for terminal block width 5 - 17.5 mm; stretchable 5 - 5.2 mm; plain; snap-on type; yellow



**Item No.: 793-501/000-006**  
WMB marking card; as card; not stretchable; plain; snap-on type; blue



**Item No.: 793-501/000-007**  
WMB marking card; as card; not stretchable; plain; snap-on type; gray



**Item No.: 793-501/000-023**  
WMB marking card; as card; not stretchable; plain; snap-on type; green



**Item No.: 793-501/000-017**  
WMB marking card; as card; not stretchable; plain; snap-on type; light green



**Item No.: 793-501/000-012**  
WMB marking card; as card; not stretchable; plain; snap-on type; orange



**Item No.: 793-501/000-005**  
WMB marking card; as card; not stretchable; plain; snap-on type; red



**Item No.: 793-501/000-024**  
WMB marking card; as card; not stretchable; plain; snap-on type; violet



**Item No.: 793-501**  
WMB marking card; as card; not stretchable; plain; snap-on type; white



**Item No.: 793-501/000-002**  
WMB marking card; as card; not stretchable; plain; snap-on type; yellow



**Item No.: 2009-115/000-006**  
WMB-Inline; for Smart Printer; 1500 pieces on roll; stretchable 5 - 5.2 mm; plain; snap-on type; blue



**Item No.: 2009-115/000-007**  
WMB-Inline; for Smart Printer; 1500 pieces on roll; stretchable 5 - 5.2 mm; plain; snap-on type; gray



**Item No.: 2009-115/000-023**  
WMB-Inline; for Smart Printer; 1500 pieces on roll; stretchable 5 - 5.2 mm; plain; snap-on type; green



**Item No.: 2009-115/000-017**  
WMB-Inline; for Smart Printer; 1500 pieces on roll; stretchable 5 - 5.2 mm; plain; snap-on type; light green



**Item No.: 2009-115/000-012**  
WMB-Inline; for Smart Printer; 1500 pieces on roll; stretchable 5 - 5.2 mm; plain; snap-on type; orange

1.1.2.1 Marker



**Item No.: 2009-115/000-024**  
WMB-Inline; for Smart Printer; 1500 pieces on roll; stretchable 5 - 5.2 mm; plain; snap-on type; violet



**Item No.: 2009-115**  
WMB-Inline; for Smart Printer; 1500 pieces on roll; stretchable 5 - 5.2 mm; plain; snap-on type; white



**Item No.: 2009-115/000-002**  
WMB-Inline; for Smart Printer; 1500 pieces on roll; stretchable 5 - 5.2 mm; plain; snap-on type; yellow

1.1.2.2 Marking strip



**Item No.: 2009-110**  
Marking strips; for Smart Printer; on reel; not stretchable; plain; snap-on type; white

1.1.3 N-busbar

1.1.3.1 Mounting accessories



**Item No.: 210-133**  
Busbar; tin-plated; 1000 mm long; Cu 10 mm x 3 mm; white



**Item No.: 790-133**  
Busbar; tin-plated; 30 mm long; Cu 10 mm x 3 mm; silver-colored



**Item No.: 790-134**  
Busbar; tin-plated; 50 mm long; Cu 10 mm x 3 mm; silver-colored

1.1.3.2 Shield termination



**Item No.: 790-190**  
U-shaped busbar; Cu 10 mm x 3 mm; for 5 I/O; suitable for 750 Series I/O modules; silver-colored



**Item No.: 790-192**  
U-shaped busbar; Cu 10 mm x 3 mm; for 5 I/O; suitable for 750 Series I/O modules; silver-colored



**Item No.: 790-191**  
U-shaped busbar; Cu 10 mm x 3 mm; for 8 I/O; suitable for 750 Series I/O modules; silver-colored



**Item No.: 790-193**  
U-shaped busbar; Cu 10 mm x 3 mm; for 8 I/O; suitable for 750 Series I/O modules; silver-colored

1.1.4 Shield termination

1.1.4.1 Shield termination



**Item No.: 790-115**  
Carrier with 2 grounding feet; parallel to carrier rail; 125 mm long; Cu 10 mm x 3 mm; gray



**Item No.: 790-113**  
Carrier with grounding foot; 90° to carrier rail; 45 mm long; Cu 10 mm x 3 mm; suitable for 790 Series shield clamping saddles; gray



**Item No.: 790-110**  
Carrier with grounding foot; parallel to carrier rail; 15 mm long; Cu 10 mm x 3 mm; suitable for 790-108 shield clamping saddles; gray



**Item No.: 790-112**  
Carrier with grounding foot; parallel to carrier rail; 25 mm long; Cu 10 mm x 3 mm; suitable for 790-108 and 790-116; gray



**Item No.: 790-114**  
Carrier with grounding foot; parallel to carrier rail; 45 mm long; Cu 10 mm x 3 mm; suitable for 790 Series shield clamping saddles and 791 Series shield clamps; gray

## Installation Notes



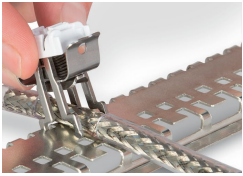
Shield clamping saddles are available in three different sizes for shield diameters ranging from 3 to 20 mm.



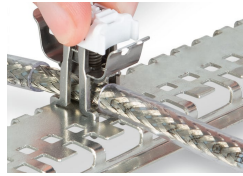
Compress the clamping saddle until fully engaged.



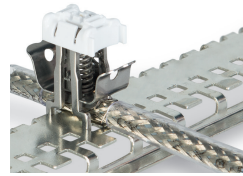
Removing the shield clamping saddle.



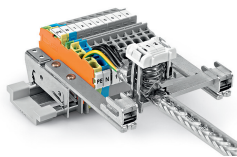
Mounting a clamping saddle on a specialty slotted DIN-rail (790-145). When releasing the saddle, do not place your finger under the clamping spring!



Removing the shield clamping saddle.



Shield clamping saddle contacts shield conductor and specialty slotted DIN-rail (790-145).



Application example



Labeling using a marking strip.



Labelling using WMB markers.