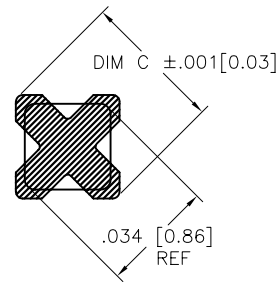
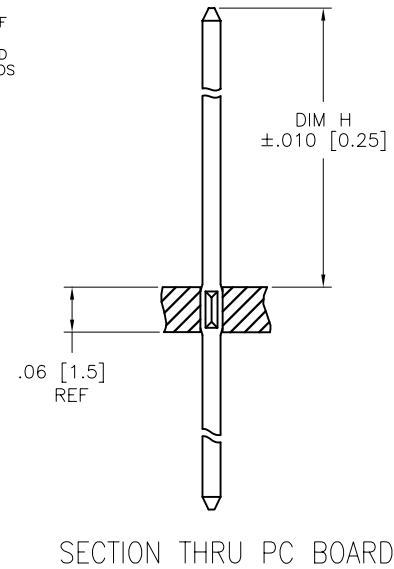
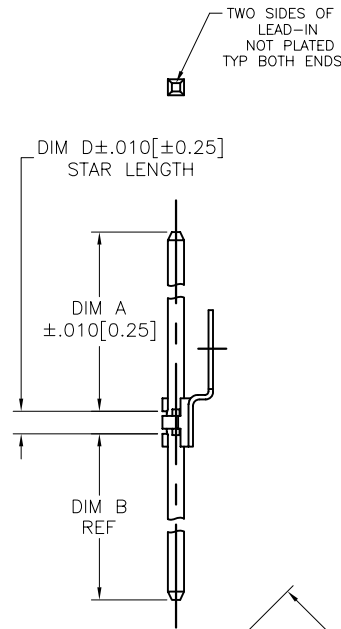
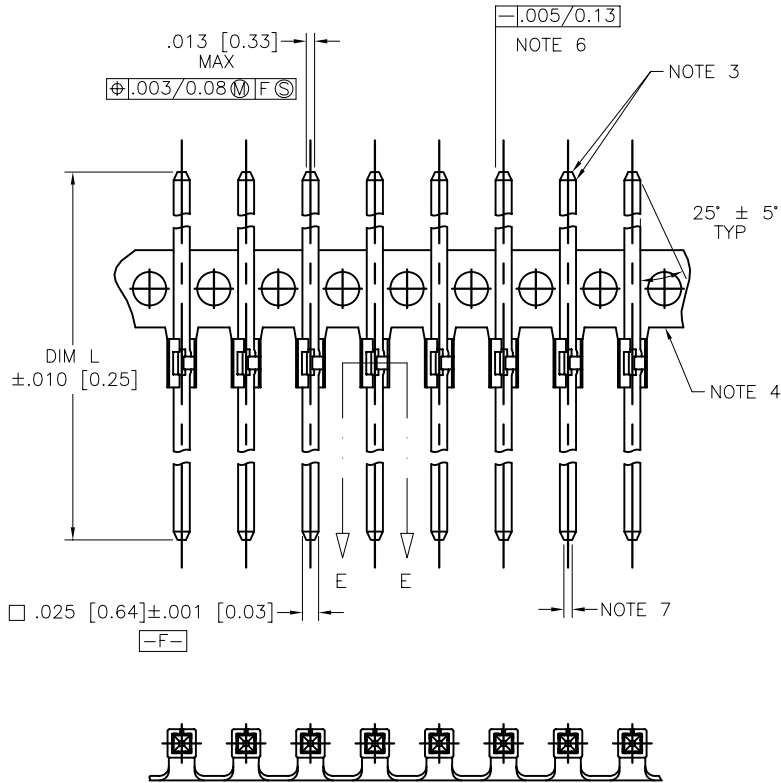


PRODUCT NUMBER
SEE TABLE



mat'l. code		surface		tolerance		projection		product family	
SEE NOTE 1		ASME Y14.5		ASME Y14.5		INCH/MM		PIN PRODUCTS	
ltr	ec'n no	dr	date	tolerances unless otherwise specified		INCH/MM		title	
AA	V07-0009	HTB	2007-01-05	angles	XX*.01/X*.3	INCH/MM		BERGPIN® .100"[2.54]cc	
AB	V08-0353	HTB	2008-08-15	0° ±2'	XXX*.005/XXX*.13	scale 4:1		.039"[0.99] DIA. STAR	
-	-	-	-	-	XXXX*.0020/XXX*.051	scale 4:1		sheet 1 of 4 size	
v	V81389	SAR	1998-08-05	dr	J.W.BAIR	FCI		75451 A4	
w	V01594	JRW	2000-07-12	enfr	K.D.PATEL	FCI		type CUSTOMER Drawing	
x	V05-0375	VS	2005-04-22	chr	K.D.PATEL	FCI			
y	V06-0684	HTB	2006-07-24	appd	K.D.PATEL	FCI			
sheet index	revision	AB	AB	AB	AB				
	sheet	1	2	3	4				

PRODUCT NO. NOTE 8	PLATING	UNDERPLATING
75451-YYY	30μ" [0.76μ] MIN Au	50μ" [1.27]μ MIN Ni
75451-YYLFF		
75453-YYY	50μ" [1.27μ] MIN Au	50μ" [1.27]μ MIN Ni
75453-YYLFF		
75454-YYY	120μ" [3.05μ] MIN 93/7 SnPb	50μ" [1.27]μ MIN Ni
75454-YYLFF	100μ" [2.54μ] MIN Sn	50μ" [1.27]μ MIN Ni
75455-YYY	30μ" [0.76μ] MIN GXT™	50μ" [1.27]μ MIN Ni
75455-YYLFF		
75456-YYY	15μ" [0.38μ] MIN GXT™	50μ" [1.27]μ MIN Ni
75456-YYLFF		
75459-YYY	15μ" [0.38μ] MIN Au	50μ" [1.27]μ MIN Ni
75459-YYLFF		

NOTE 10 — DISCONTINUED
NOTE 9

NOTES

- ① PIN MATERIAL: PHOS. BRONZE, 3/4 HARD ASTM B-159-66.
2. CENTER LINE OF TERMINAL MUST BE IN A TRUE POSITION WITHIN .015 [0.38] DIA. WITH RESPECT TO THE HOLE AXIS AFTER INSERTION IN A P. C. BOARD.
- ③ BURNISH MARKS ON PIN PERMITTED.
BURR .003 [0.08] MAX. TYP.
BULGE .0005 [0.013] MAX. TYP.
- ④ CARRIER STRIP FOR CONVEYING PURPOSES ONLY.
- ⑤ SEE PRODUCT SPECIFICATION BUS-12-064 FOR P.C. BOARD HOLE DIAMETER AND P.C. BOARD PLATING INFORMATION.
- ⑥ .005 [0.13] STRAIGHTNESS FOR PIN LENGTHS UP TO 1.000 [2.54].
.008 [0.20] STRAIGHTNESS FOR PIN LENGTHS GREATER THAN 1.000 [2.54].
.009 [0.23] STRAIGHTNESS FOR DASH NUMBERS INDICATED. (SEE TABLE)
- ⑦ TIP WIDTH ON THIS END ONLY MAY BE .016 [0.41] MAX. FOR PARTS WITH DIM B LESS THAN .235 [5.97], OTHERWISE .013 [0.33] MAX.
- ⑧ ADD AN LF SUFFIX TO PART NUMBER FOR PRODUCT THAT MEETS EUROPEAN UNION DIRECTIVES AND OTHER COUNTRY REGULATIONS AS DESCRIBED IN GS-22-008.
- ⑨ THIS PRODUCT HAS 100% TIN PLATING IN THE INTERFACE AND HAS NOT BEEN TESTED FOR WHISKER GROWTH IN ALL INTERCONNECT ENVIRONMENTS.
- ⑩ 75454-YYY IS NOT RoHS COMPLIANT.

A

A

B

B

mat'l. code		surface		tolerance		projection		product family	
SEE NOTE 1		ASME Y14.5		ASME Y14.5				PIN PRODUCTS	
ltr	ec'n no	dr	date	tolerances unless otherwise specified				title	
AB				angles	XX*.01/X*.3	INCH/MM		BERGPIN® .100"[2.54]cc	
				0° ±2'	XXX*.005/XX*.13	scale 1:1		.039"[0.99] DIA. STAR	
					XXXX*.0020/XXX*.051			dwg no	
		dr	J.W.BAIR		1990-01-15			sheet 2 of 4 size	
		engr	K.D.PATEL		1990-01-15			75451 A4	
		chr	K.D.PATEL		1990-01-15			type	
		appd	K.D.PATEL		1990-01-15			CUSTOMER Drawing	
sheet index	revision sheet								



PRODUCT NUMBER	TOTAL PIN LGTH		DIM A	DIM A	DIM B	DIM B	DIM H FOR .062/1.57 BOARD		DIM H FOR .093/2.36 BOARD		DIM H FOR .125/3.18 BOARD		DIM C	DIM C	STAR LENGTH DIM 'D'	
	ENGLISH	METRIC					ENGLISH	METRIC	ENGLISH	METRIC	ENGLISH	METRIC			ENGLISH	METRIC
7545X-001	0.345	8.76	0.230	5.84	0.045	1.14	0.235	5.97	0.220	5.59	0.205	5.21	0.039	0.99	0.070	1.78
7545X-002	0.380	9.65	0.265	6.73	0.045	1.14	0.270	6.86	0.255	6.48	0.240	6.10	0.039	0.99	0.070	1.78
7545X-003	0.460	11.68	0.345	8.76	0.045	1.14	0.350	8.89	0.335	8.51	0.320	8.13	0.039	0.99	0.070	1.78
7545X-004	0.515	13.08	0.400	10.16	0.045	1.14	0.405	10.29	0.390	9.91	0.375	9.53	0.039	0.99	0.070	1.78
7545X-005	0.530	13.46	0.415	10.54	0.045	1.14	0.420	10.67	0.405	10.29	0.390	9.91	0.039	0.99	0.070	1.78
7545X-006	0.550	13.97	0.435	11.05	0.045	1.14	0.440	11.18	0.425	10.80	0.410	10.41	0.039	0.99	0.070	1.78
7545X-007	0.580	14.73	0.465	11.81	0.045	1.14	0.470	11.94	0.455	11.56	0.440	11.18	0.039	0.99	0.070	1.78
7545X-008	0.630	16.00	0.515	13.08	0.045	1.14	0.520	13.21	0.505	12.83	0.490	12.45	0.039	0.99	0.070	1.78
7545X-009	0.685	17.40	0.570	14.48	0.045	1.14	0.575	14.61	0.560	14.22	0.545	13.84	0.039	0.99	0.070	1.78
7545X-010	0.700	17.78	0.585	14.86	0.045	1.14	0.590	14.99	0.575	14.61	0.560	14.22	0.039	0.99	0.070	1.78
7545X-011	0.750	19.05	0.635	16.13	0.045	1.14	0.640	16.26	0.625	15.88	0.610	15.49	0.039	0.99	0.070	1.78
7545X-012	0.770	19.56	0.655	16.64	0.045	1.14	0.660	16.76	0.645	16.38	0.630	16.00	0.039	0.99	0.070	1.78
7545X-013	0.860	21.84	0.745	18.92	0.045	1.14	0.750	19.05	0.735	18.67	0.720	18.29	0.039	0.99	0.070	1.78
7545X-014	0.580	14.73	0.265	6.73	0.245	6.22	0.270	6.86	0.255	6.48	0.240	6.10	0.039	0.99	0.070	1.78
7545X-015	0.660	16.76	0.345	8.76	0.245	6.22	0.350	8.89	0.335	8.51	0.320	8.13	0.039	0.99	0.070	1.78
7545X-016	0.715	18.16	0.400	10.16	0.245	6.22	0.405	10.29	0.390	9.91	0.375	9.53	0.039	0.99	0.070	1.78
7545X-017	0.780	19.81	0.465	11.81	0.245	6.22	0.470	11.94	0.455	11.56	0.440	11.18	0.039	0.99	0.070	1.78
7545X-018	0.885	22.48	0.570	14.48	0.245	6.22	0.575	14.61	0.560	14.22	0.545	13.84	0.039	0.99	0.070	1.78
7545X-019	0.940	23.88	0.625	15.88	0.245	6.22	0.630	16.00	0.615	15.62	0.600	15.24	0.039	0.99	0.070	1.78
7545X-020	0.970	24.64	0.655	16.64	0.245	6.22	0.660	16.76	0.645	16.38	0.630	16.00	0.039	0.99	0.070	1.78
7545X-021	0.690	17.53	0.265	6.73	0.355	9.02	0.270	6.86	0.255	6.48	0.240	6.10	0.039	0.99	0.070	1.78
7545X-022	0.770	19.56	0.345	8.76	0.355	9.02	0.350	8.89	0.335	8.51	0.320	8.13	0.039	0.99	0.070	1.78
7545X-023	0.825	20.96	0.400	10.16	0.355	9.02	0.405	10.29	0.390	9.91	0.375	9.53	0.039	0.99	0.070	1.78
7545X-024	0.890	22.61	0.465	11.81	0.355	9.02	0.470	11.94	0.455	11.56	0.440	11.18	0.039	0.99	0.070	1.78
7545X-025	0.995	25.27	0.570	14.48	0.355	9.02	0.575	14.61	0.560	14.22	0.545	13.84	0.039	0.99	0.070	1.78
7545X-026	1.050	26.67	0.625	15.88	0.355	9.02	0.630	16.00	0.615	15.62	0.600	15.24	0.039	0.99	0.070	1.78
7545X-027	1.080	27.43	0.655	16.64	0.355	9.02	0.660	16.76	0.645	16.38	0.630	16.00	0.039	0.99	0.070	1.78

A

A

B

B

mat'l. code SEE NOTE 1				surface ASME Y14.5 <input checked="" type="checkbox"/> ASME Y14.5		tolerance tolerances unless otherwise specified		projection 		product family PIN PRODUCTS			
ltr	ecn no	dr	date	angles	fin	XX*01/XX*3	INCH/MM	title BERGPIN® .100"[2.54]cc .039"[0.99] DIA. STAR					
AB				0° ±2'	10	XXX*005/XX*13	scale 1:1	dwg no 75451					
						XXXX*0020/XXX*051		sheet 3 of 4 size A4					
								type CUSTOMER Drawing					
sheet index	revision sheet												



PRODUCT NUMBER	TOTAL PIN LGTH		DIM A	DIM A	DIM B	DIM B	DIM H FOR .062/1.57 BOARD		DIM H FOR .093/2.36 BOARD		DIM H FOR .125/3.18 BOARD		DIM C	DIM C	CUST.	STAR LENGTH DIM 'D'	
	DIM L	DIM L					ENGLISH	METRIC	ENGLISH	METRIC	ENGLISH	METRIC				ENGLISH	METRIC
NOTE 8	ENGLISH	METRIC	ENGLISH	METRIC	ENGLISH	METRIC	ENGLISH	METRIC	ENGLISH	METRIC	ENGLISH	METRIC	ENGLISH	METRIC	RESTRI.	ENGLISH	METRIC
7545X-028	0.405	10.29	0.305	7.75	0.035	0.89	0.310	7.87	0.295	7.49	0.280	7.11	0.039	0.99	NO	0.070	1.78
7545X-029	1.170	29.72	0.755	19.18	0.345	8.76	0.760	19.30	0.745	18.92	0.730	18.54	0.039	0.99	NO	0.070	1.78
7545X-030	1.125	28.58	0.710	18.03	0.345	8.76	0.715	18.16	0.700	17.78	0.685	17.40	0.039	0.99	NO	0.070	1.78
7545X-031	0.805	20.45	0.545	13.84	0.190	4.83	0.550	13.97	0.535	13.59	0.520	13.21	0.039	0.99	NO	0.070	1.78
7545X-032	0.585	14.86	0.300	7.62	0.215	5.46	0.305	7.75	0.290	7.37	0.275	6.99	0.039	0.99	NO	0.070	1.78
7545X-033	0.780	19.81	0.335	8.51	0.375	9.53	0.340	8.64	0.325	8.26	0.310	7.87	0.039	0.99	NO	0.070	1.78
7545X-034	0.650	16.51	0.535	13.59	0.045	1.14	0.540	13.72	0.525	13.34	0.510	12.95	0.039	0.99	NO	0.070	1.78
7545X-035	0.890	22.61	0.560	14.22	0.260	6.60	0.565	14.35	0.550	13.97	0.535	13.59	0.039	0.99	NO	0.070	1.78
7545X-036	0.953	24.21	0.510	12.95	0.373	9.47	0.515	13.08	0.500	12.70	0.485	12.32	0.039	0.99	NO	0.070	1.78
7545X-037	0.515	13.08	0.325	8.26	0.120	3.05	0.330	8.38	0.315	8.00	0.300	7.62	0.039	0.99	NO	0.070	1.78
7545X-038	1.100	27.94	0.664	16.87	0.366	9.30	0.668	16.97	0.653	16.59	0.638	16.21	0.039	0.99	NO	0.070	1.78
7545X-039	1.100	27.94	0.380	9.65	0.650	16.51	0.385	9.78	0.370	9.40	0.355	9.02	0.038	0.97	YES	0.070	1.78
7545X-040	1.270	32.26	0.390	9.91	0.810	20.57	0.395	10.03	0.380	9.65	0.365	9.27	0.038	0.97	YES	0.070	1.78
7545X-041	1.760	44.70	0.510	12.95	1.180	29.97	0.515	13.08	0.500	12.70	0.485	12.32	0.038	0.97	YES	0.070	1.78
7545X-042	1.840	46.74	0.510	12.95	1.260	32.00	0.515	13.08	0.500	12.70	0.485	12.32	0.038	0.97	YES	0.070	1.78
7545X-043	0.710	18.03	0.610	15.49	0.030	0.76	0.615	15.62	0.600	15.24	0.585	14.86	0.038	0.97	YES	0.070	1.78
7545X-044	1.110	28.19	0.655	16.64	0.385	9.78	0.655	16.64	0.640	16.26	0.625	15.88	0.038	0.97	YES	0.070	1.78
7545X-045	1.270	32.26	0.810	20.57	0.390	9.91	0.815	20.70	0.800	20.32	0.785	19.94	0.038	0.97	YES	0.070	1.78
7545X-046	1.760	44.70	1.180	29.97	0.510	12.95	1.185	30.10	1.170	29.72	1.155	29.34	0.038	0.97	YES	0.070	1.78
7545X-047	1.840	46.74	1.260	32.00	0.510	12.95	1.265	32.13	1.250	31.75	1.235	31.37	0.038	0.97	YES	0.070	1.78
7545X-048	1.370	34.80	0.390	9.91	0.910	23.11	0.395	10.03	0.380	9.65	0.365	9.27	0.038	0.97	YES	0.070	1.78
7545X-049	1.370	34.80	0.910	23.11	0.390	9.91	0.915	23.24	0.900	22.86	0.885	22.48	0.038	0.97	YES	0.070	1.78
7545X-050	0.685	17.40	0.365	9.27	0.250	6.35	0.370	9.40	0.355	9.02	0.340	8.64	0.039	0.99	NO	0.070	1.78
7545X-051	1.100	27.94	0.775	19.69	0.255	6.48	0.780	19.81	0.765	19.43	0.750	19.05	0.039	0.99	NO	0.070	1.78
7545X-052	0.930	23.62	0.697	17.70	0.193	4.90	0.686	17.42	0.671	17.04	0.655	16.64	0.039	0.99	NO	0.040	1.02

NOTE 6
NOTE 6

NOTE 6
NOTE 6

mat'l. code		surface		tolerance		projection		product family	
SEE NOTE 1		ASME Y14.5		ASME Y14.5				PIN PRODUCTS	
ltr	ecrn no	dr	date	tolerances unless otherwise specified		INCH/MM		title	
AB				angles	XX+01/X+3			BERGPIN® .100"[2.54]cc	
					XXX+005/XXX+13			.039"[0.99] DIA. STAR	
				0° ±2'	XXXX+0020/XXX+051	scale 1:1		dwg no	
				dr	J.W. BAIR	1990-01-15		sheet 4 of 4	
				engr	E. IORFIDO	1992-09-10		size	
				chr	K.D. PATEL	1990-01-15		75451	
				appd	E. IORFIDO	1992-09-10		A4	
sheet index		revision sheet						type	
								CUSTOMER Drawing	